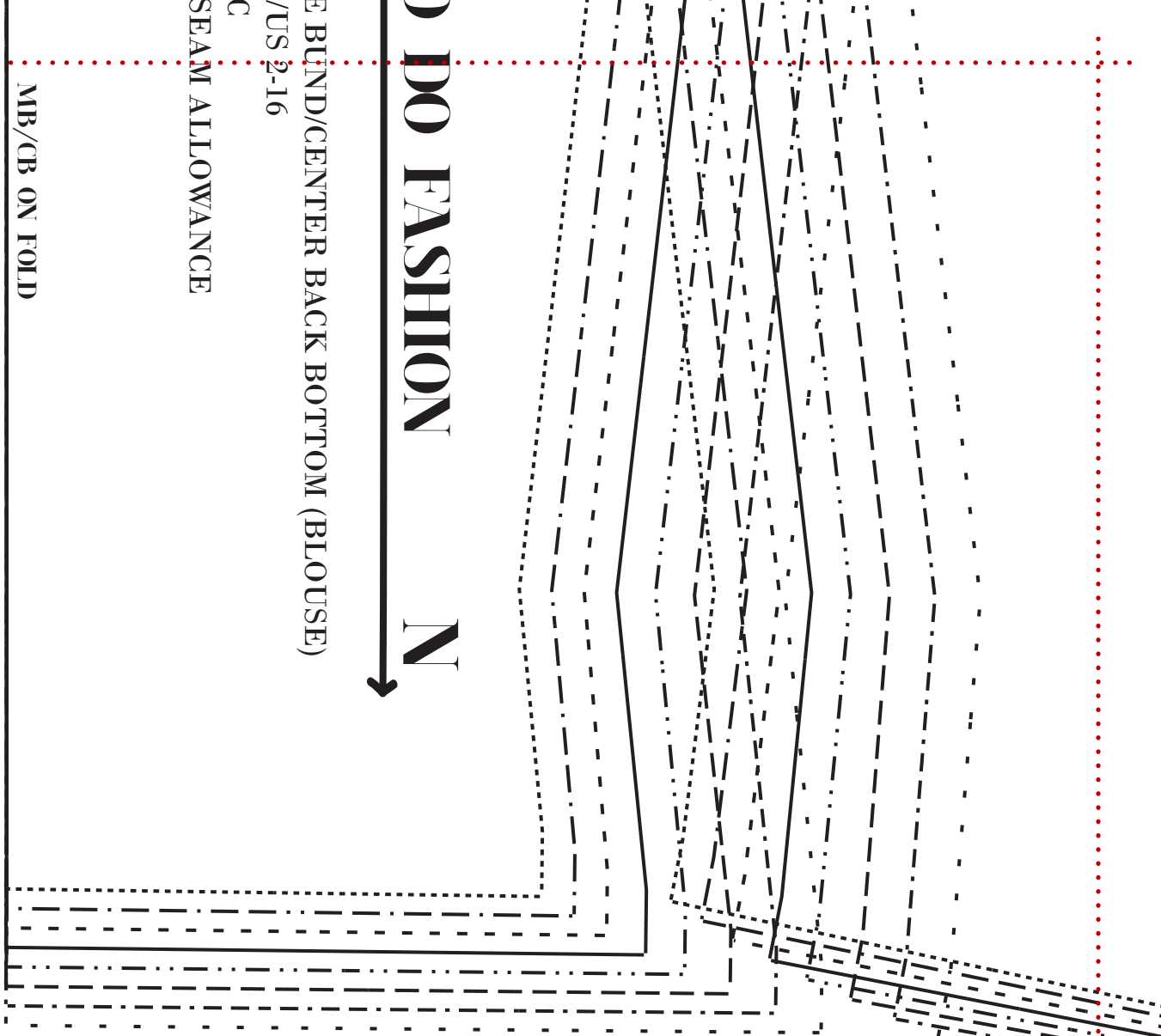


1a



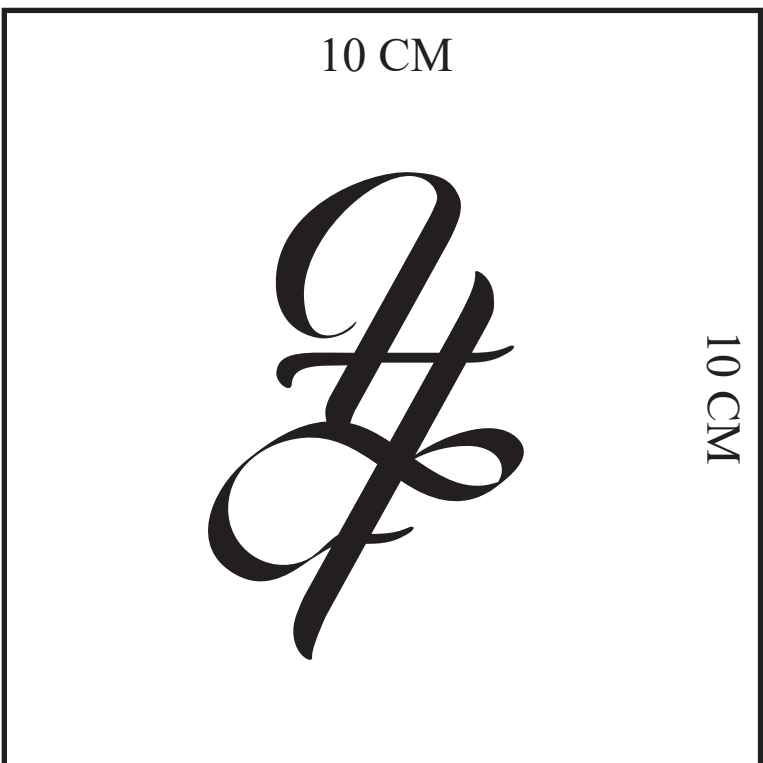
DO FASHION **N** ↓

BACK/CENTER BACK BOTTOM (BLOUSE)

US 2-16

SEAM ALLOWANCE

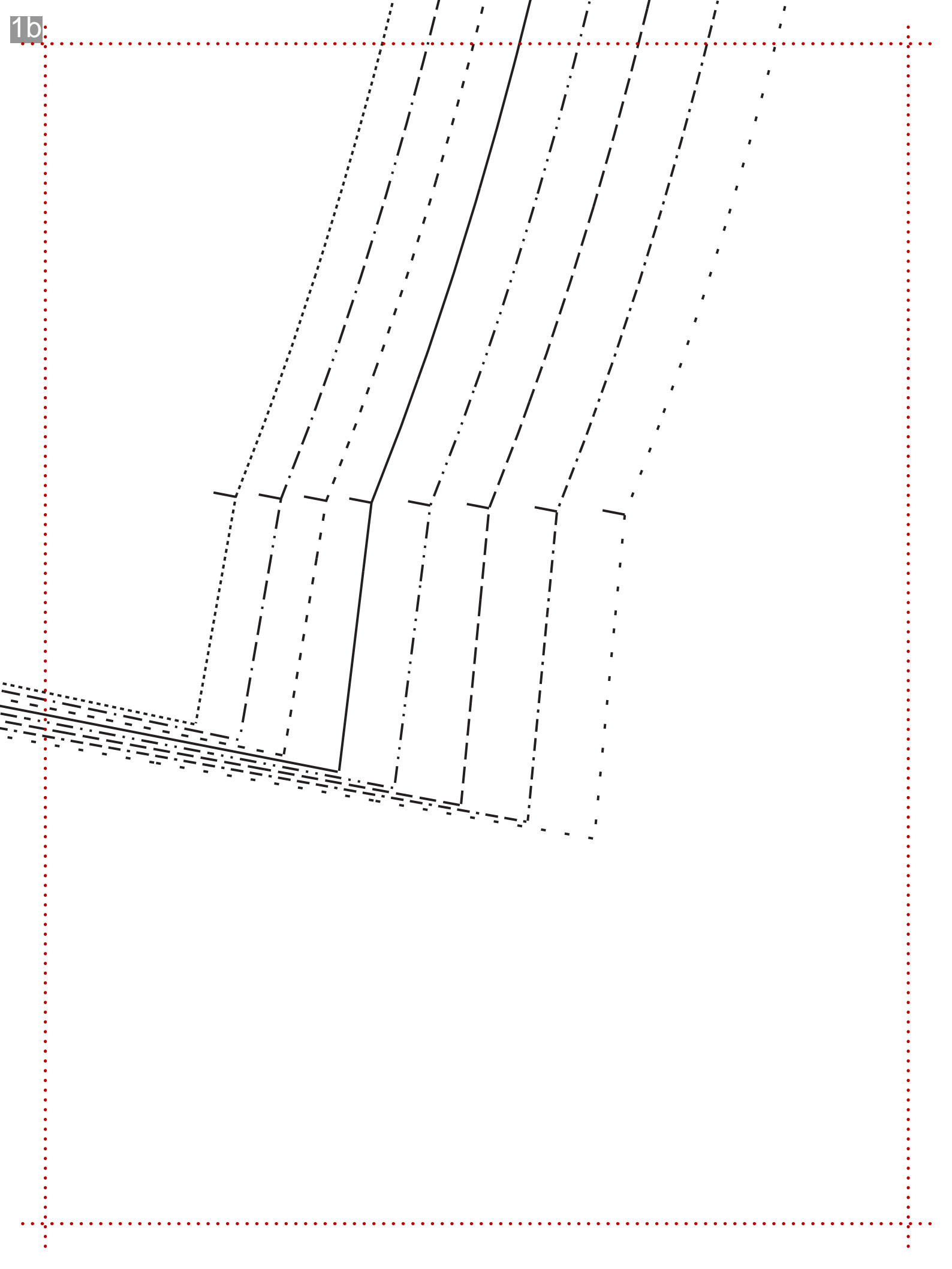
MB/CB ON FOLD

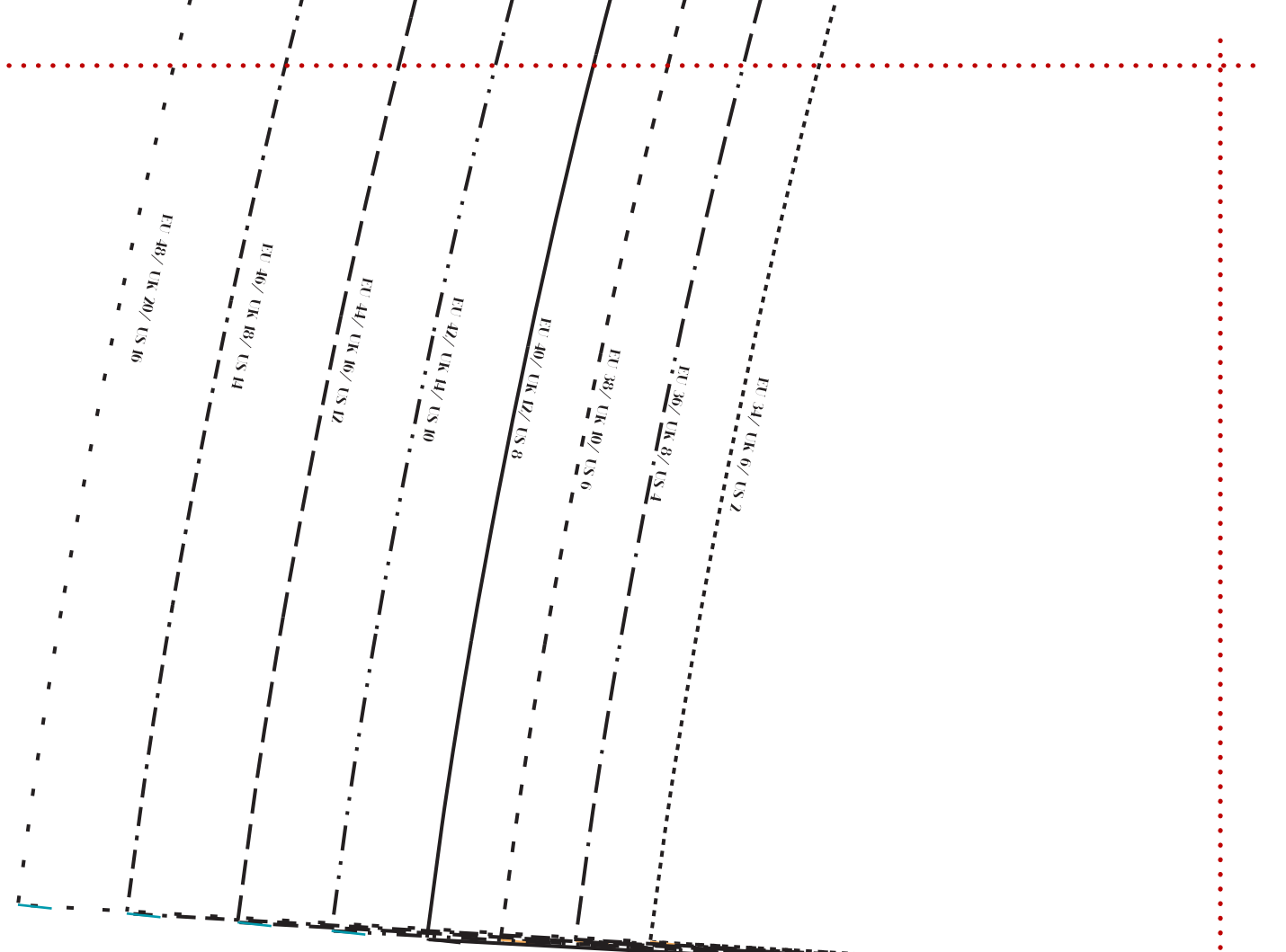


10 CM

10 CM

1b





- ⊗ EU 34/UK 6/US 2
- ⊗ EU 36/UK 8/US 4
- ⊗ EU 38/UK 10/US 6
- ⊗ EU 40/UK 12/US 8
- ⊗ EU 42/UK 14/US 10
- ⊗ EU 44/UK 16/US 12
- ⊗ EU 46/UK 18/US 14
- ⊗ EU 48/UK 20/US 16

HOW TO DO

NO. 16 SEVILLA
 MIDT BAGBLUSE BUND/
 EU 34-48/UK 6-20/US 2-16
 1 X STOF/FABRIC
 INCL. 1 CM SØM/SEAM AI

HOW TO DO FASHI

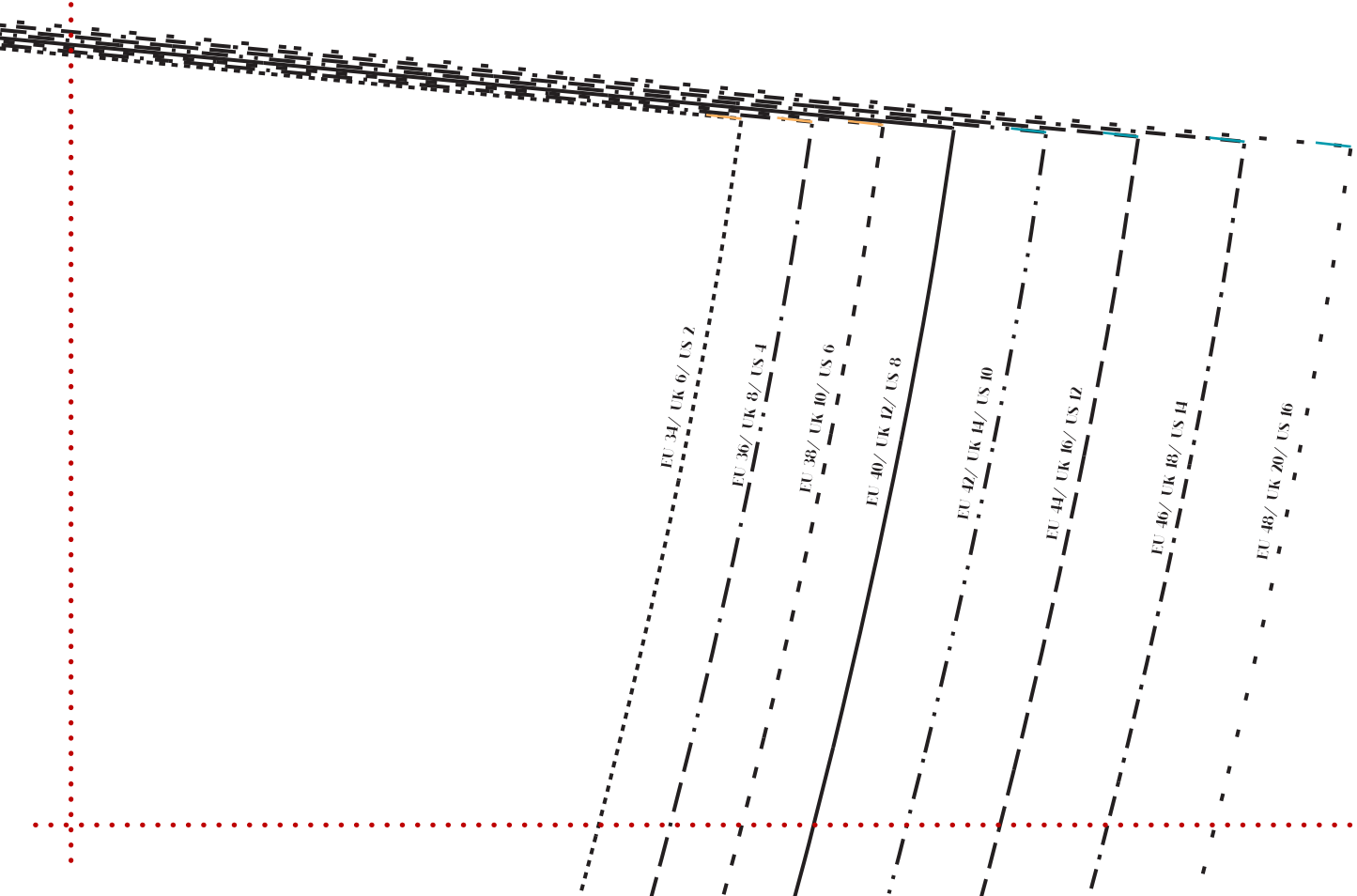
NO. 16 SEVILLA

MIDT FOR BLUSE BUND/CENTER: FRO

EU 34-48/UK 6-20/US 2-16

1 X STOF/FABRIC

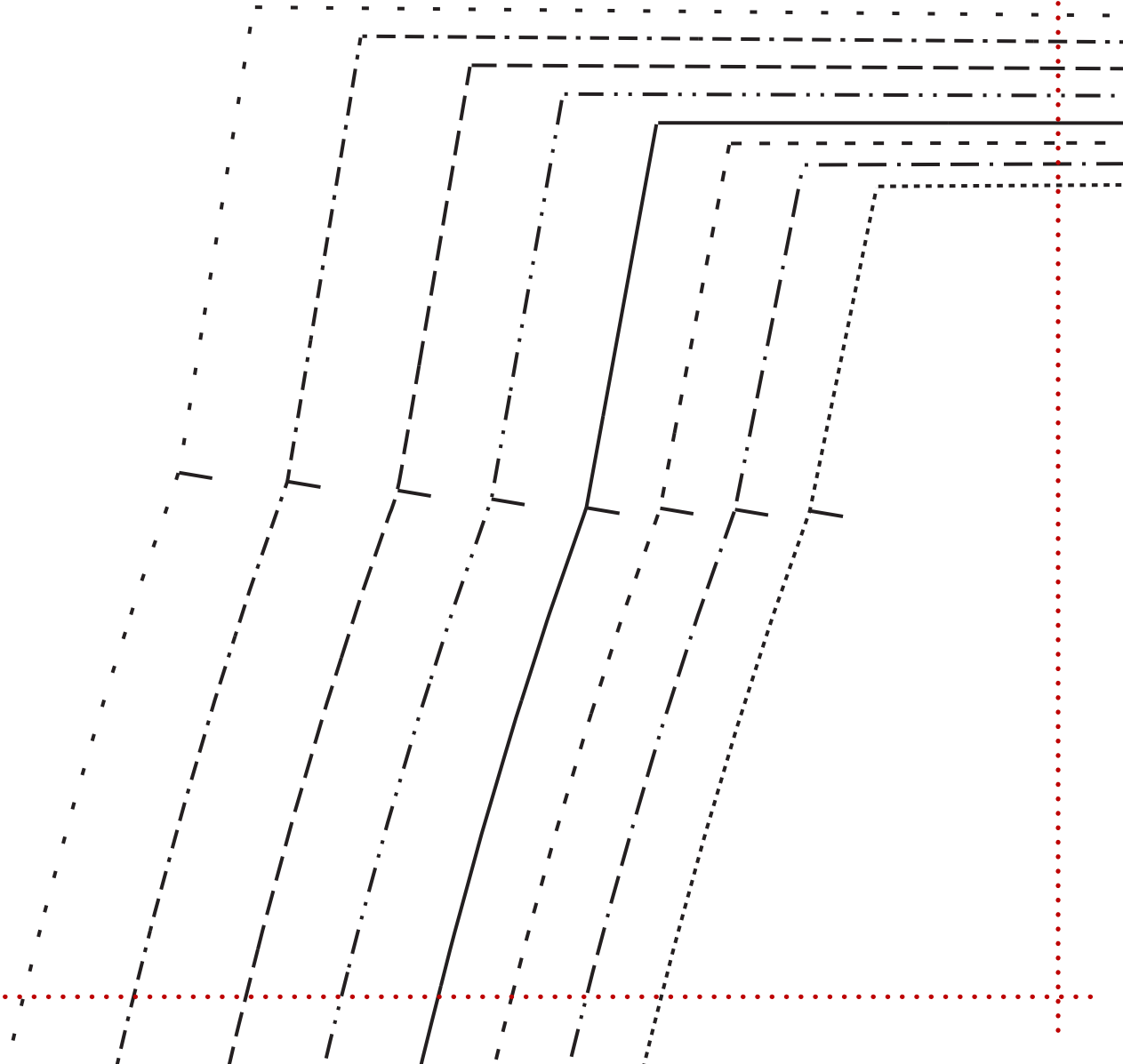
INCL. 1 CM SØM/SEAM ALLOWANCE



How to do FASHION

This pattern, text, graphics and photographs are copyrighted in 2018 by HOW TO DO FASHION.

All right reserved. This pattern is only for personal non-commercial use.

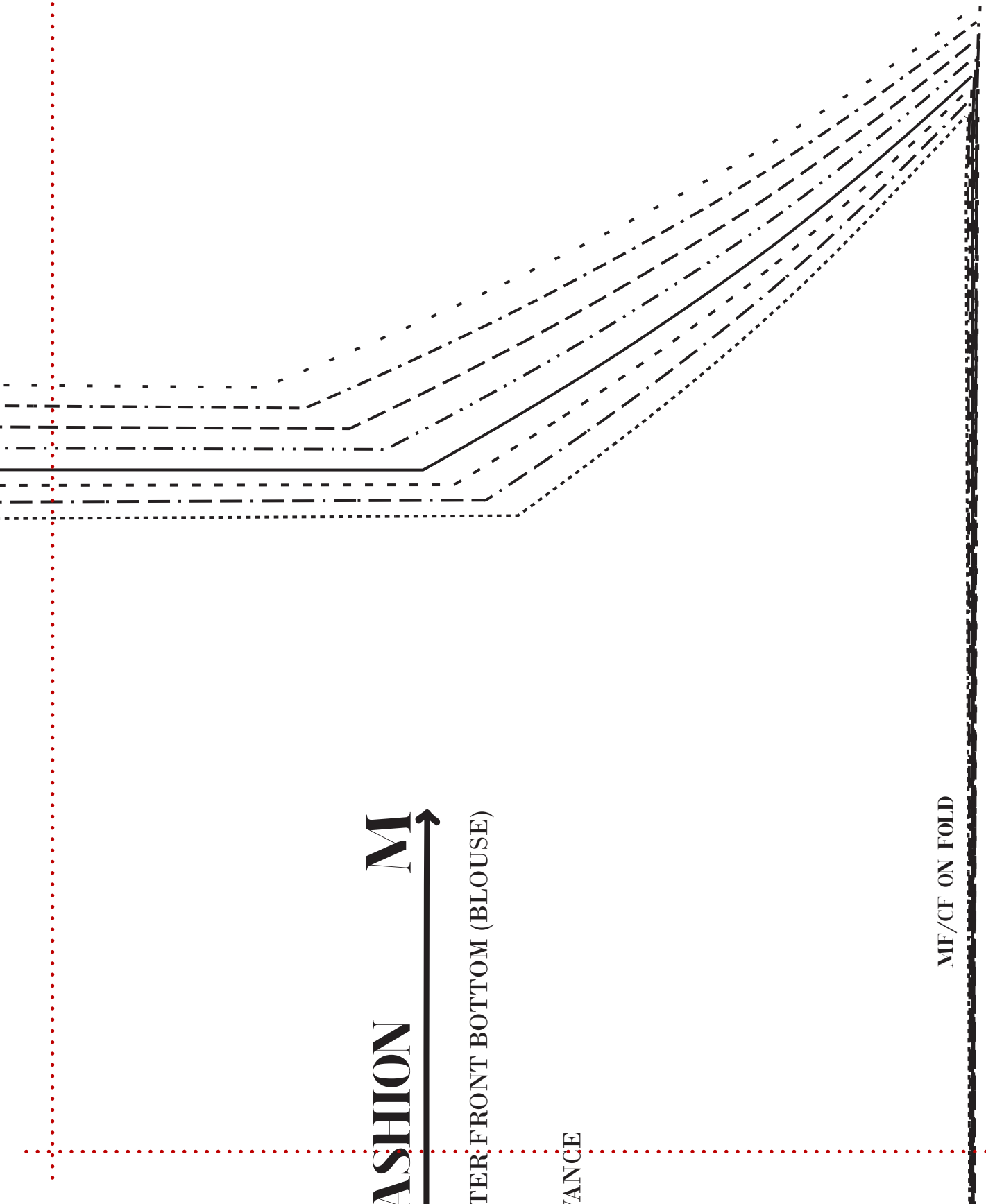


FASHION M

FRONT BOTTOM (BLOUSE)

PLA

MF/CF ON FOLD

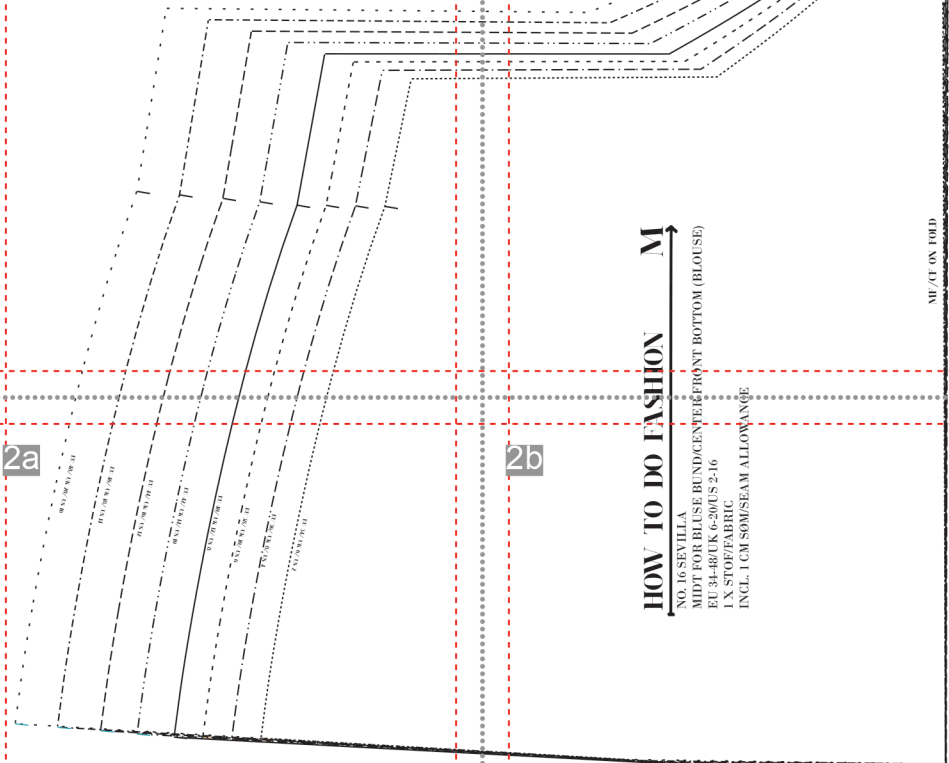


3a

HOW to do FASHION

This pattern, text, graphics and photographs are copyrighted in 2018 by HOW TO DO FASHION.
All right reserved. This pattern is only for personal non-commercial use.

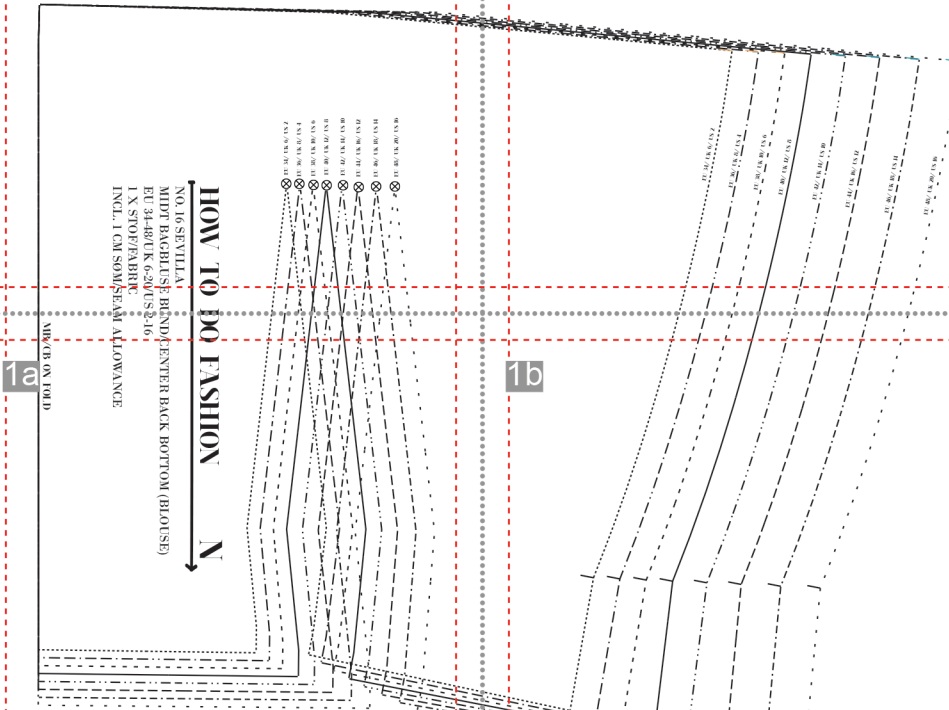
3b



2a

2b

1a



1b

