

How to do FASHION

Size chart EU/UK/US													
	32/4/0	34/6/2	36/8/4	38/10/6	40/12/8	42/14/10	44/16/12	46/18/14	48/20/16	50/22/18	52/24/20	54/26/22	
CHEST													
CM	80	84	88	92	96	101	106	112	118	124	131	138	
INCH	31.5	33.1	34.6	36.2	37.8	39.8	41.7	44.1	46.5	48.8	51.6	54.3	
WAIST													
CM	62	66	70	74	78	83	88	94	100	106	113	120	
INCH	24.4	26.0	27.6	29.1	30.7	32.7	34.6	37.0	39.4	41.7	44.5	47.2	
HIP													
CM	90	94	98	102	106	111	116	122	128	134	141	148	
INCH	35.4	37.0	38.6	40.2	41.7	43.7	45.7	48.0	50.4	52.8	55.5	58.3	



HOW TO MEASURE

Chest - measure at the top of the bust

Waist - measure at the narrowest point

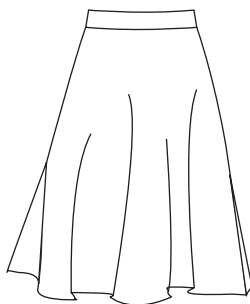
Hip - Measure at the widest point

All measurement have to be horizontal

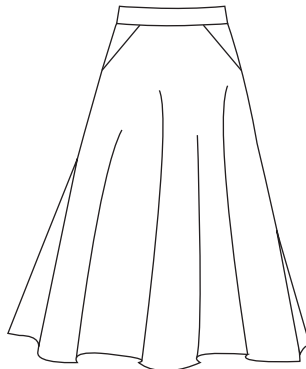
Finished measurement No.24 Antheuil Version 1, 2 & 3

	32/4/0	34/6/2	36/8/4	38/10/6	40/12/8	42/14/10	44/16/12	46/18/14	48/20/16	50/22/18	52/24/20	54/26/22	
WAIST VERSION 1, 2 & 3													
CM	64	68	72	76	80	85	90	96	102	108	115	122	
INCH	25.2	26.8	28.3	29.9	31.5	33.5	35.4	37.8	40.2	42.5	45.3	48.0	
HIP FREE													
LENGTH FROM WAIST TO BOTTOM VERSION 1													
CM	70.50	71.50	72.50	73.50	74.50	75.50	76.50	77.50	78.50	79.50	80.50	81.50	
INCH	27.76	28.15	28.54	28.94	29.33	29.72	30.12	30.51	30.91	31.30	31.69	32.09	
LENGTH FROM WAIST TO BOTTOM VERSION 2													
CM	77.5	78.5	79.5	80.5	81.5	82.5	83.5	84.5	85.5	86.5	87.5	88.5	
INCH	30.5	30.9	31.3	31.7	32.1	32.5	32.9	33.3	33.7	34.1	34.4	34.8	
LENGTH FROM WAIST TO BOTTOM VERSION 3													
CM	97.5	98.5	99.5	100.5	101.5	102.5	103.5	104.5	105.5	106.5	107.8	109.1	
INCH	38.4	38.8	39.2	39.6	40.0	40.4	40.7	41.1	41.5	41.9	42.4	43.0	

VERSION 1



VERSION 2



VERSION 3

