



NO. 27 BERLIN



VERSION 2



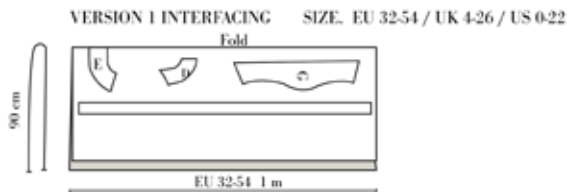
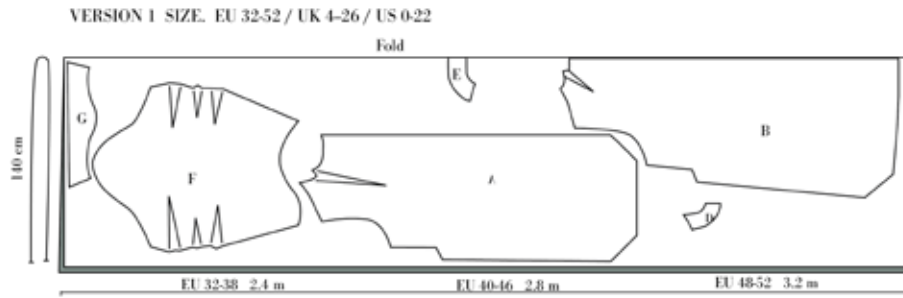
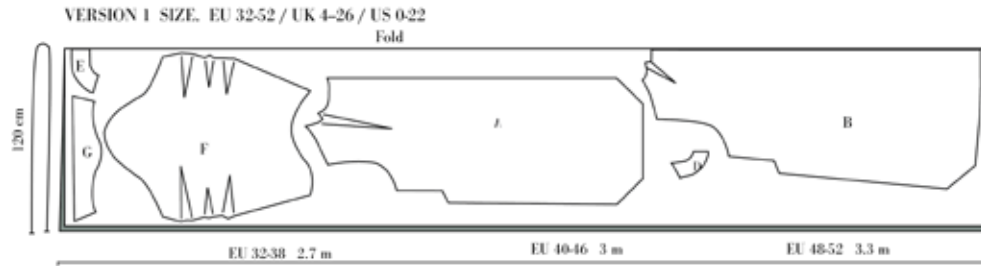


Cutting Fabric:

On each pattern piece, you will find a capital letter. On the cutting layout plan, you will find the same capital letters so that you can easily see which pattern pieces to use for the view you have chosen.

YOU WILL NEED THE FOLLOWING PATTERN PIECES:

A,B,C,D,F,G

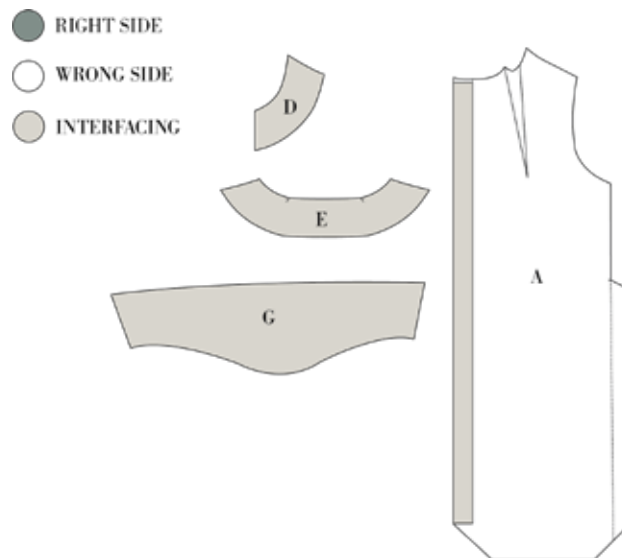




Sewing instructions

NOTE! THE PATTERN HAS 1 CM SEAM ALLOWANCES INCLUDED UNLESS OTHERWISE NOTED.

1. Cut all your pieces in fabric and interfacing as needed.
2. Press interfacing to the front and neck facing (D) & (E) the build in facing on front piece (A) and the sleeve facing (G)



3. Sew the darts on the front pieces (A) with right sides together. Fold according to the markings. Press towards centre front
4. Sew the darts on the back pieces (B) with right sides together. Fold according to the markings. Press towards center back
5. Sew the darts on the sleeves (F) with right sides together. Fold according to the markings. Press the darts upwards.





6. Finish the raw edges of:

You can finish by overlocking, making a zig-zag or with bias tape.

-Center front

-Bottom on both front and back

-Side seams - see how to overlock the angle

-Shoulder seams

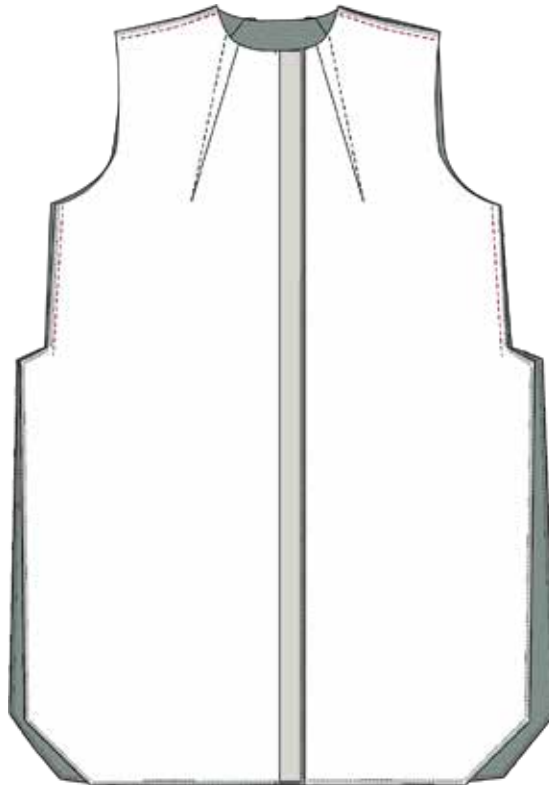
-Inner seam of the sleeves.

-The long straight side of the sleeve facing (G)



7. Sew front and back pieces together at shoulder seams, right sides together. Press seams open.

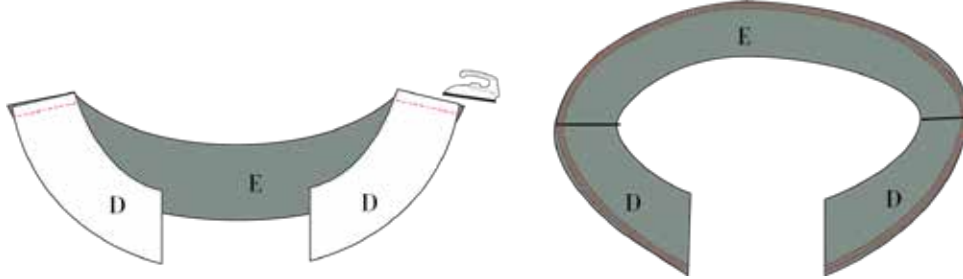
8. Sew front and back pieces together in the side seams, right sides together. Stop at the marking and press seams open.



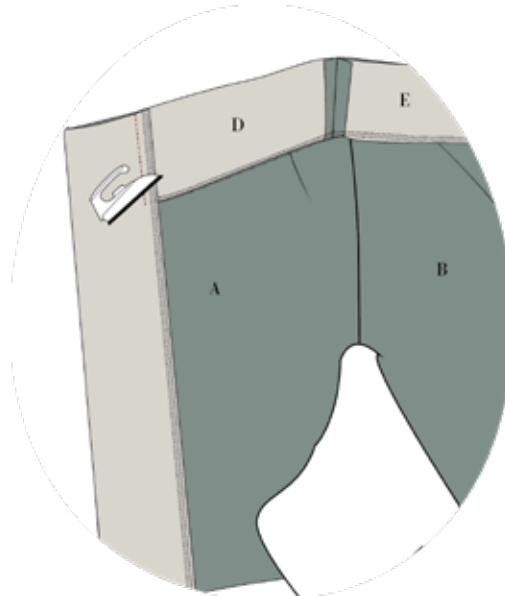


9. Sew the neck facing pieces (E & D) together at the shoulder seams matching notches, right sides together. Press seams open.

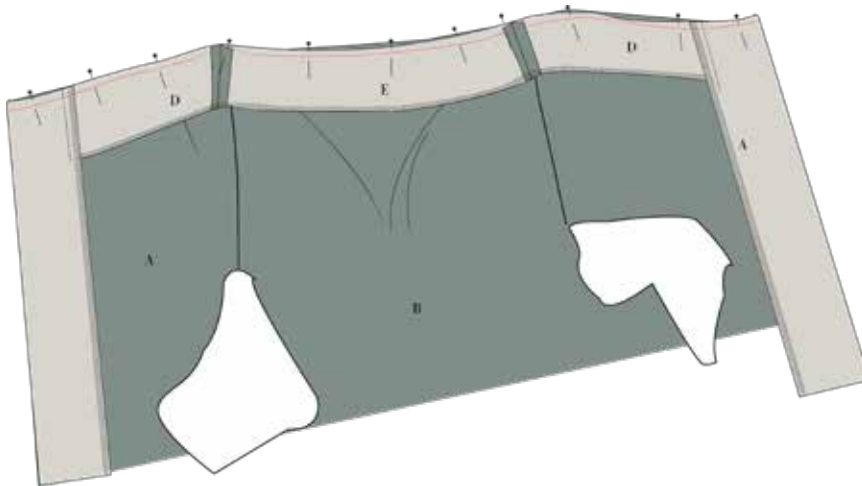
10. Finish the long edge of the neck facing.



- 11. Sew the front of the neck facing to the front of the coat at the neckline, matching notches, right sides together. Press seam towards neck facing. See the drawing below.

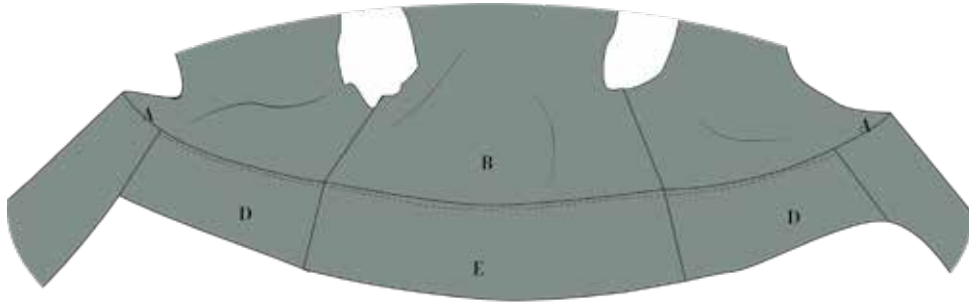


12. Attach the neck facing to the neck of the coat. Pair the shoulder seam of the neck facing and the coat on top of each other. Press seam allowance towards the facing of the coat.





13. Clip notches and Understitch the facing, making sure you catch the seam allowance. Turn the facing to the wrong side.



14. Sew the sleeves, right sides together. Press seams open .

15. Sew the sleeve facing, right sides together. Press seams open.

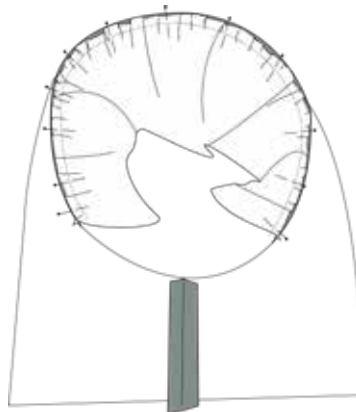
16. Place the Sleeve facing to the bottom of the sleeve, right sides together and the sleeve facing to the sleeve.

17. Clip notches to the seam allowance and understitch the sleeve facing to the sleeve, turn and press.



18. Sew two ease stitches 0.5 cm and 1.5 cm from the edge of the sleeve head. 10 cm on each side of the top-notch.

19. Attach the sleeve to the armhole matching notches at the shoulder seam and front piece (A). See guideonline

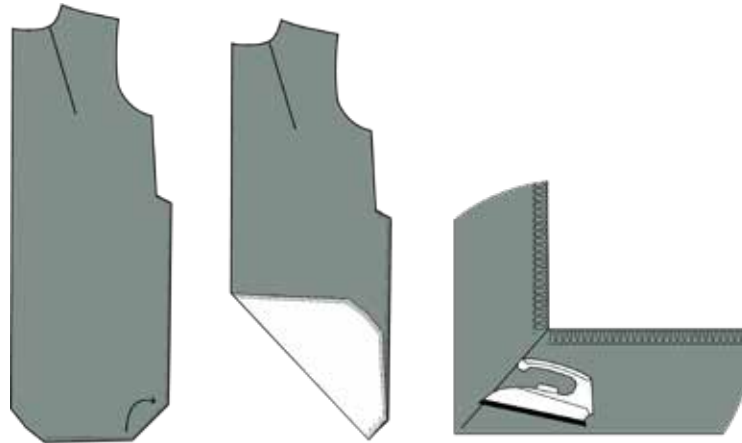




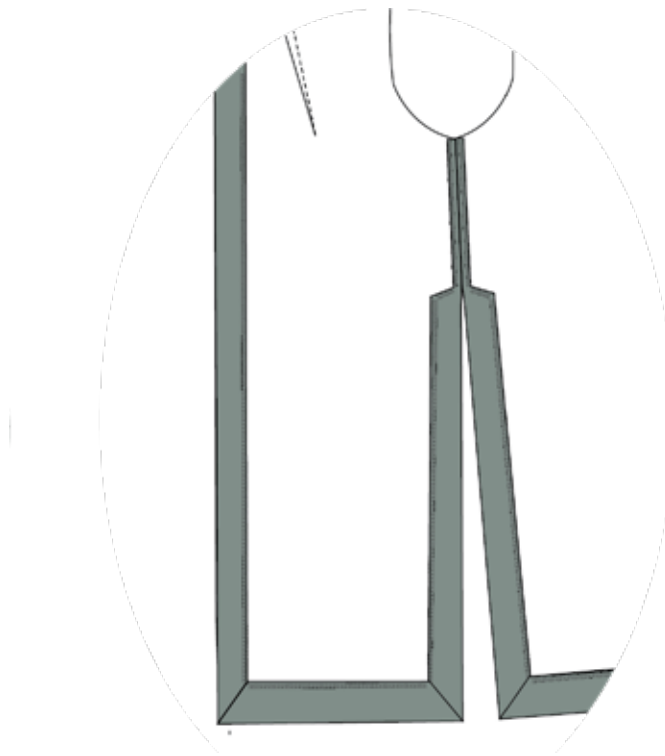
20. Finish the edge of the armhole. Press the seam towards the sleeve.

HEMMING

21. Start by sewing all six corners on front and back pieces by folding the slanted edge in half right sides together and sew along the open edge.



22. Turn and press the hemline, the front edge and slits with 5 cm.





23. Hem the coat either with a catchstitch for an invisible hemline or make a top stitch 4.5 cm from the folded edge.

