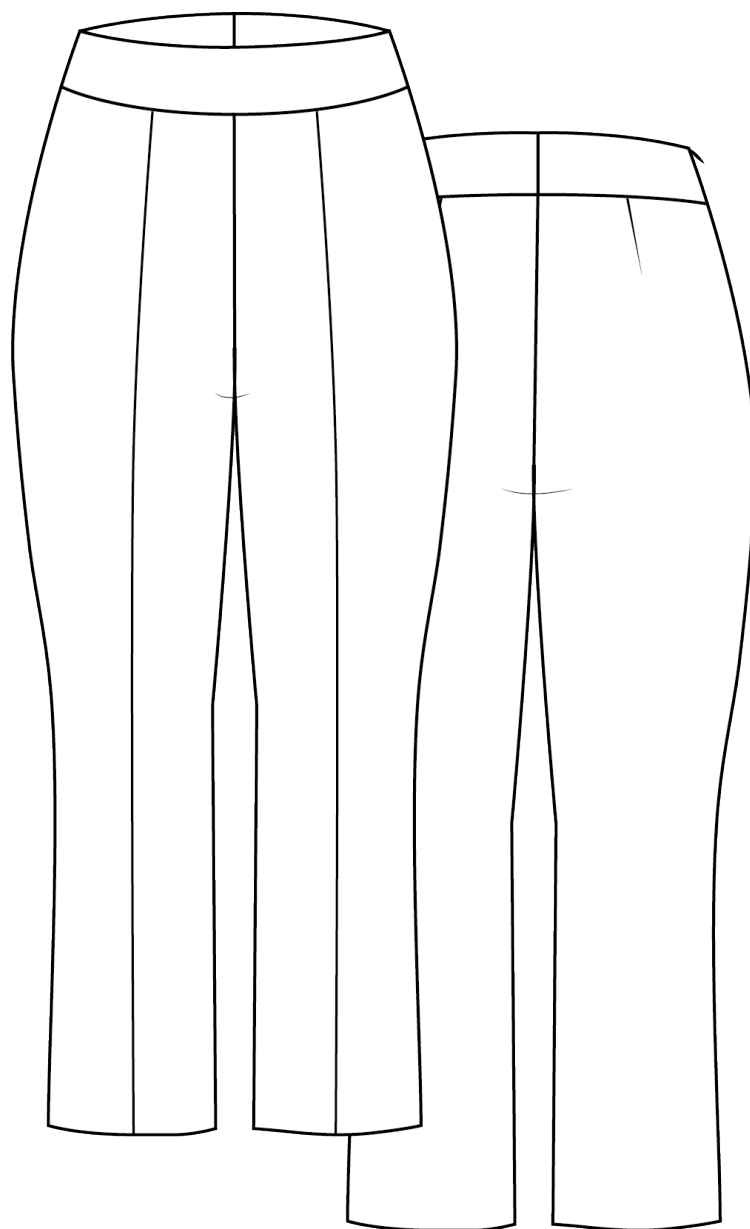




NO. 28 HANOVER



Version 1

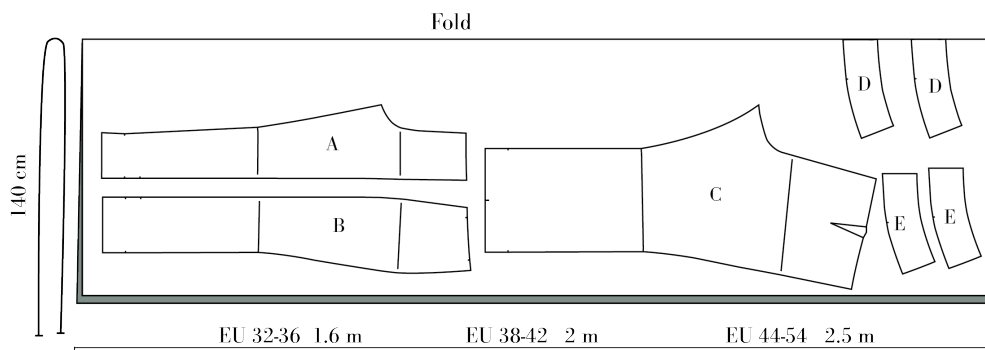
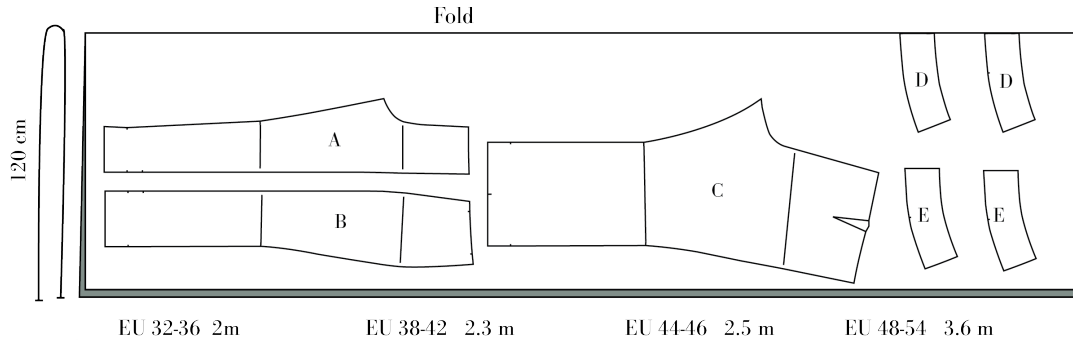




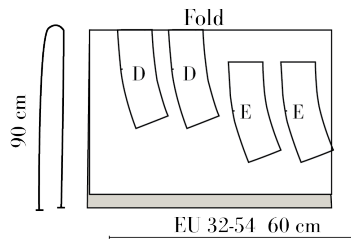
Cutting Fabric:

On each pattern piece, you will find a capital letter. On the cutting layout plan, you will find the same capital letters so that you can easily see which pattern pieces to use for the view you have chosen.

VERSION 2 SIZE. EU 32-54 / UK 4-26 / US 0-22



VERSION 1 & 2 INTERFACING SIZE. EU 32-54 / UK 4-26 / US 0-22





SEWING

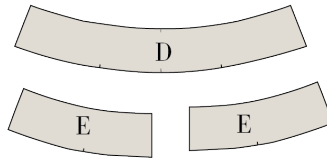
NOTE! THE PATTERN HAS 1 CM SEAM ALLOWANCES INCLUDED UNLESS OTHERWISE NOTED.

1. Cut all your pieces in fabric and interfacing as needed.
2. 2. Press interfacing to all the front and back yoke pieces (D) & (E)

● RIGHT SIDE

○ WRONG SIDE

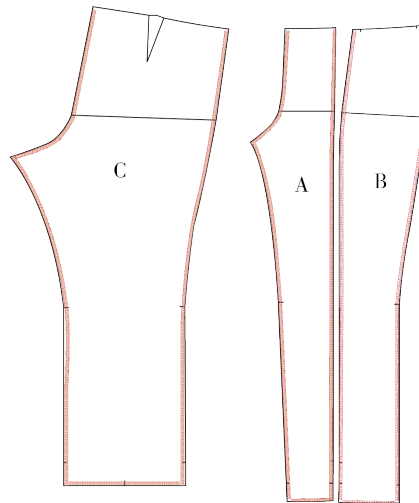
● INTERFACING



3. Finish the seams of:

You can finish by overlocking or making a zig-zag

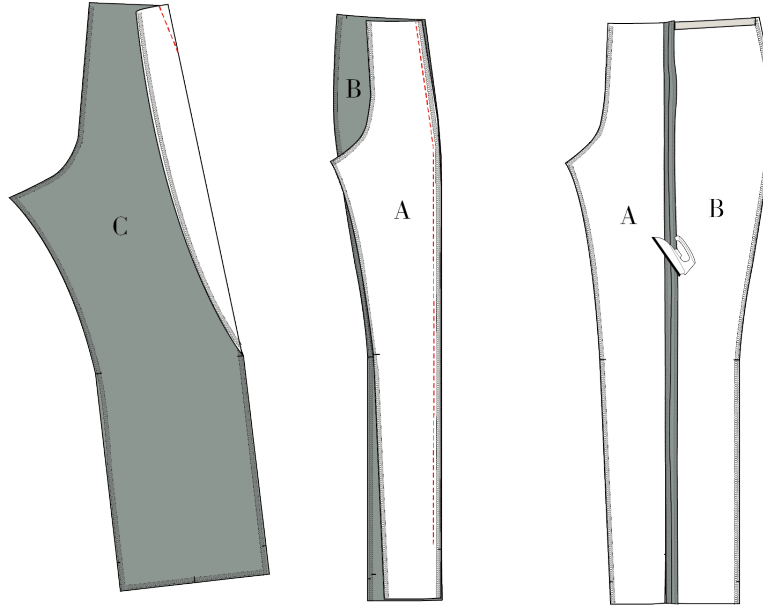
- Crutch line front and center back piece (A) (C)
- Inner seam front and back piece (A) (C)
- Side seam front and back piece (B) (C)
- Front seam (A) (B)
- Hem line on back and front pieces (C) (A) (B)





4. Sew the darts on the back pieces (C) with right sides together. Fold according to the markings. Press towards center back.

5. Sew the front and side piece together (A) (B) right sides together. Stop the seam at the first notch at the bottom. Press seam open.

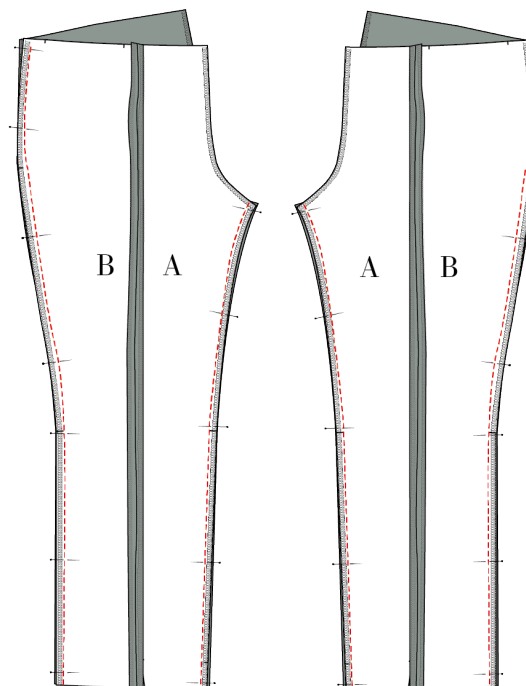


SEW THE TROUSERS

6. Sew the left side seam, right sides together.

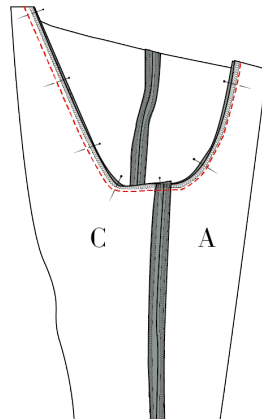
7. Sew the right side seams, right sides together, stop at hip notch.

8. Sew the inseams, right sides together. Press all seams open.





29. Sew the crutch seam, place the left leg inside the right leg with right sides together.

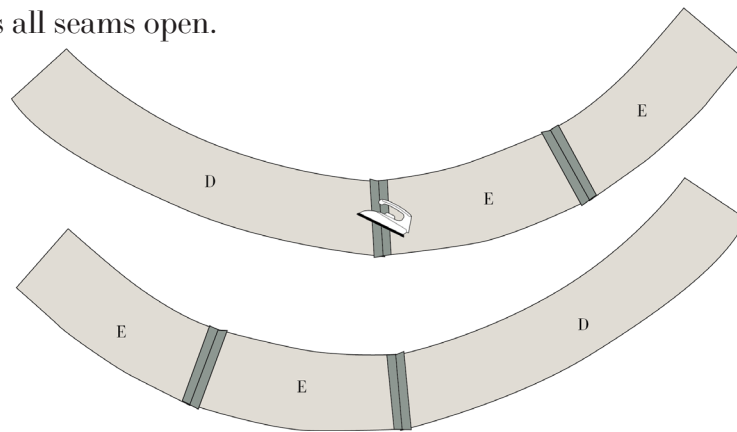


SEW THE YOKE

10. Sew the yoke center back seam right sides together (E).

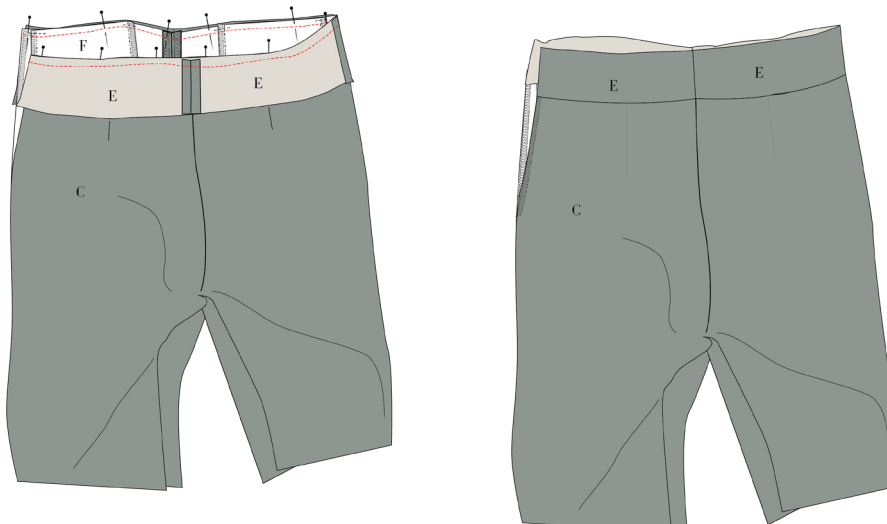
11. Sew the yoke front to the side. Make sure to make the two yokes as a mirrored pair.

12. Press all seams open.



13. Sew one yoke to the waist, right sides together. Be careful not to catch the pocket opening in the seam.

14. Press the yoke upwards. And the seam allowance towards the yoke.



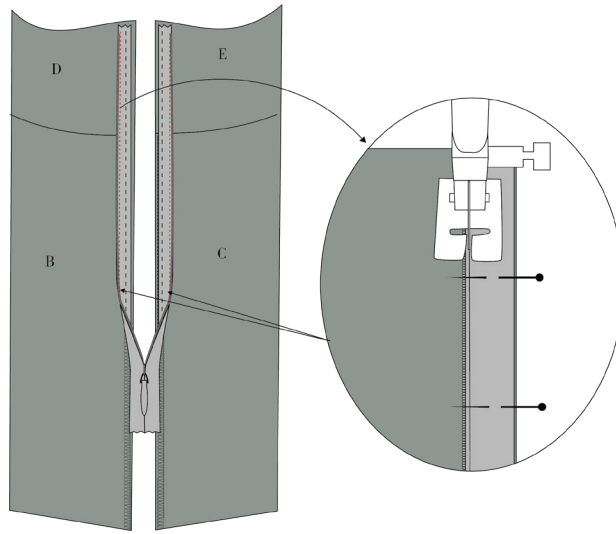


SEW THE ZIPPER

15. Place the right side of the zipper allonge the edge of the side seam. Place the end of the zipper band in the same height as the raw edge of the yoke. Be careful that the cutline of front and back match up.

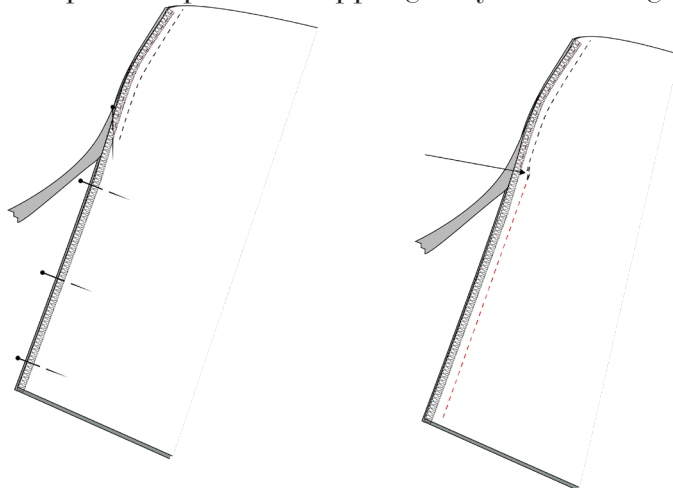
16. Baste stitch the zipper to the pants.

17. Use a sewing foot for invisible zippers or flip the teeth of the zipper aside and sew the zipper in place.



18. Sew the rest of the side seam below the zipper.

19. Press seam open and press the zipper gently from the right side.



20. Place the second yoke on the yoke sewn to the pants, right side together, and sew.



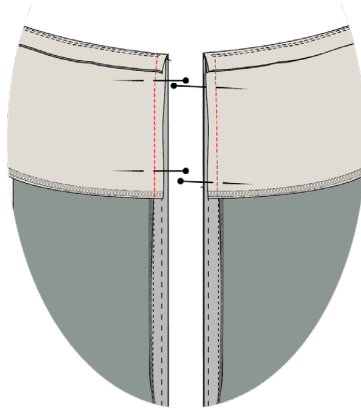
21. Clip notches to the seam allowance.

22. Press the yoke upwards and under-stitch the seam allowance to the second yoke.

23. Finish the edge with an overlock or bias tape.

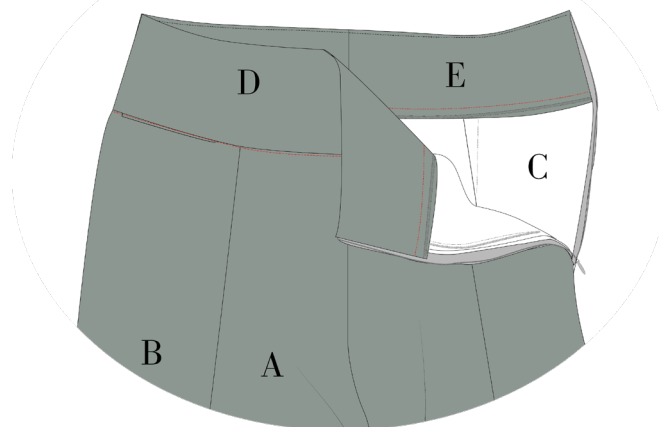


24. Turn the yoke to the right side, sandwiched the zipper in between the two yokes and sew together approx. 0.5 cm from edge.



25. Turn the yoke gently and press the yoke in place.

26. Finish the yoke by stitching in the ditch from the right side of the pants, making sure to catch the inside yoke.



HEM THE PANTS

27. Press the hem inside the pants, press and hem with a catch stitch or a topstitch.
