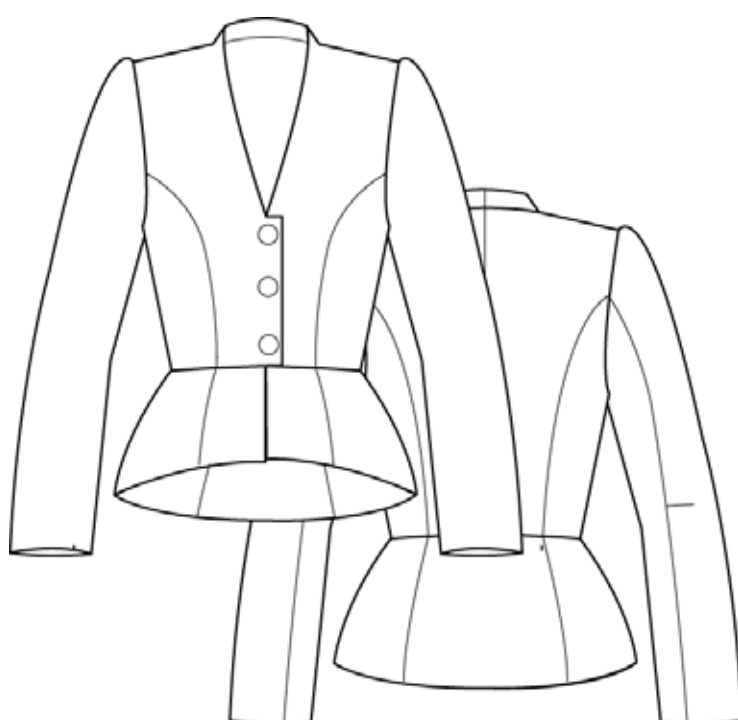




# NO. 0 STOCKHOLM

---



---

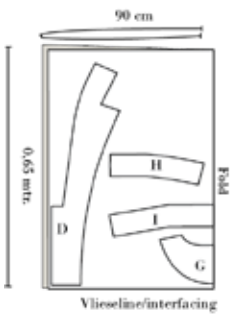
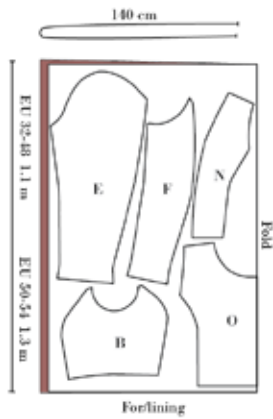
VERSION 1



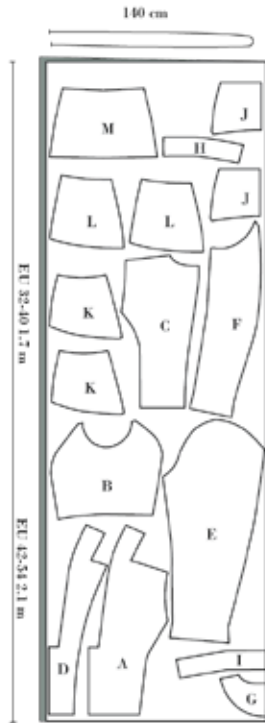


### CUTTING FABRIC:

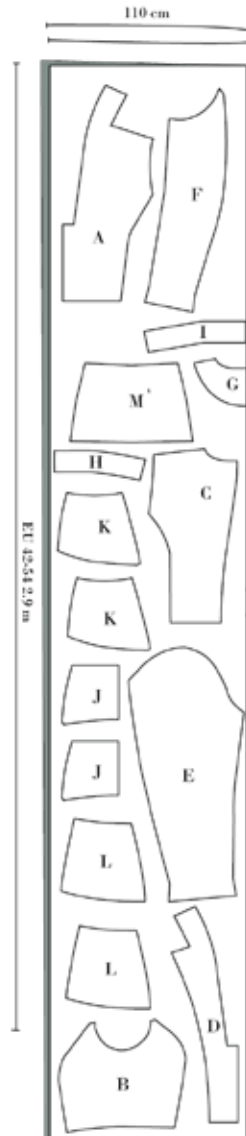
On each pattern piece you will find a capital letter. On the cutting layout plan, you will find the same capital letters so that you can easily see which pattern pieces to use for the view you have chosen.



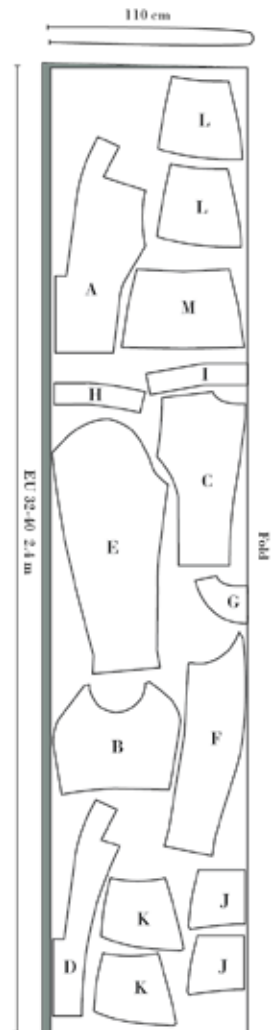
VERSION 1 LINING AND INTERLINING SIZE: EU 32-48 / UK 4-26 / US 0-22



VERSION 1 SIZE: EU 32-48 / UK 4-26 / US 0-16



VERSION 1 SIZE: EU 42-54 / UK 22-36 / US 18-22



VERSION 1 SIZE: EU 32-40 / UK 4-20 / US 0-16

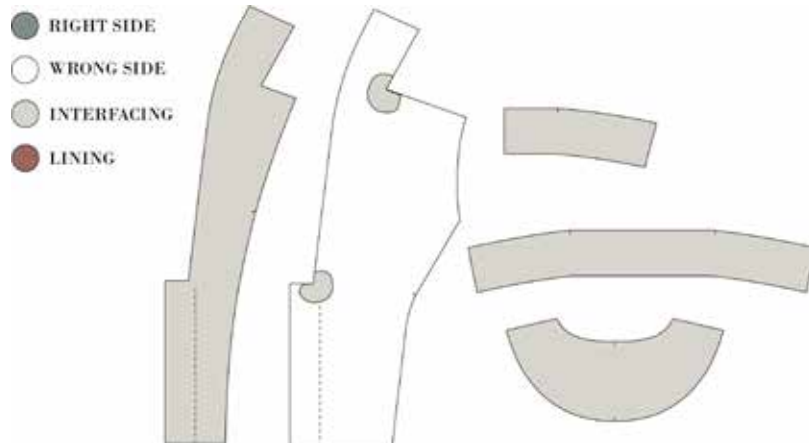


---

## Sewing

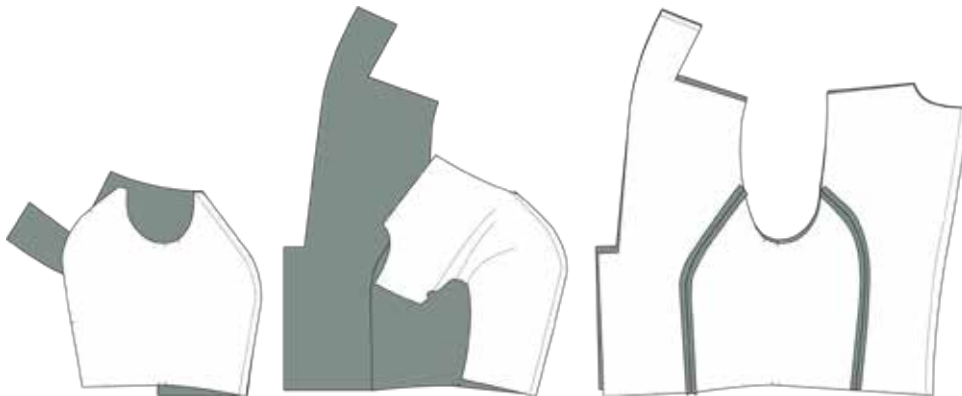
Nb! The pattern has 1 cm seam allowances included, unless otherwise noted.

1. Cut all pieces according to the cutting layout plan.
2. Press interfacing to all facing pieces and to a circle at the collar/shoulder point and at the overlap notch.



### JACKET:

3. Sew all vertical seams (side-front seam, side-back seam and center-back seam), right sides together. Press the seam allowances open.
4. Sew the front piece neck/center-back seam. Press the seam allowances open.

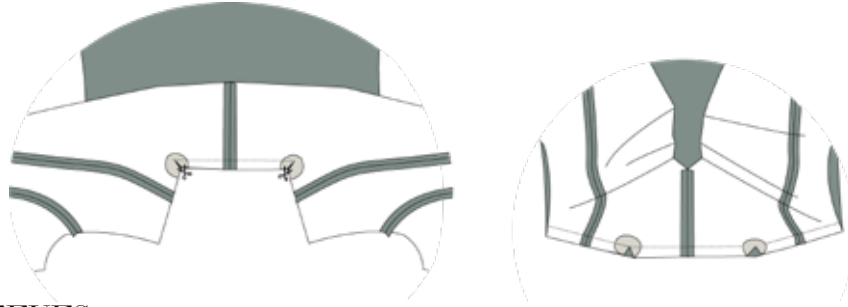




---

5. Sew the back neckline by placing front and back right sides together and sew from notch to notch. Secure the seam. Clip notches to the corners of the neckline on the front piece, to be able to turn the fabric and sew the shoulder seams.

6. Press the seam allowances towards the front pieces and upwards at the back neck.



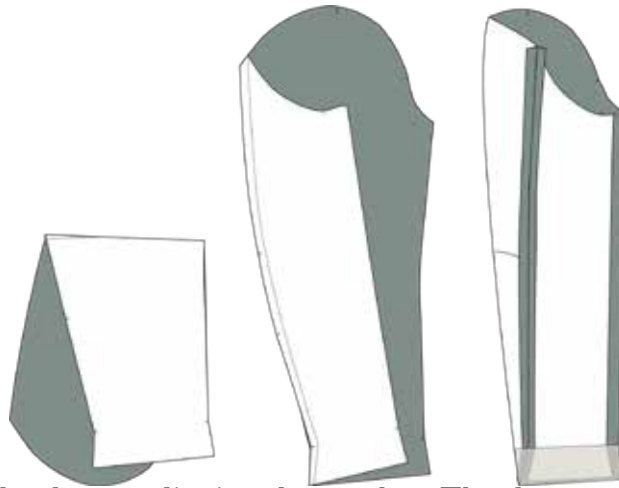
#### SLEEVES:

7. Sew the elbow dart and press it upwards.

8. Sew first the long and then the short sleeve seam, right sides together. Press seam allowances open.

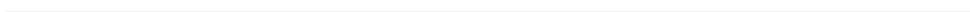
9. Press a 5 cm piece of hem interfacing to the sleeve hem (see how to online).

10. Press the hem according to the notches. It should be 5 cm deep.



11. Set in the sleeves, aligning the notches. The sleeve cap is larger than the armhole and needs to be eased in (see how to online).

12. Sew sleeve heads and shoulder pads in place



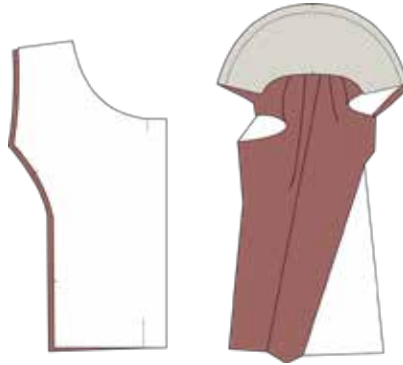


---

**SEW THE LINING:**

13. Sew the centre-back of the lining, right sides together, according to markings to create the center-back ease pleat.

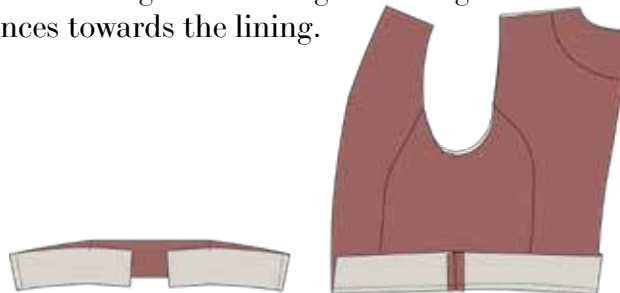
14. Sew the back neck facing to the back lining, right sides together. Press the seam allowances towards the lining.



15. Sew all the vertical seams (side-front seams and side-back seams), right sides together.

16. Sew the waist facing side seams. Press the seam allowances open

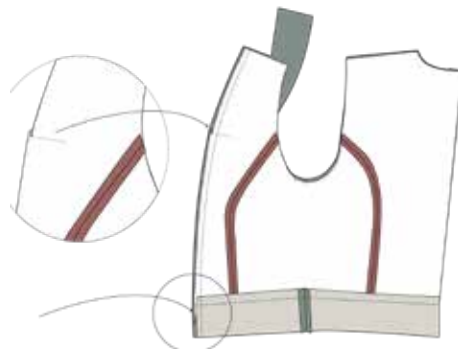
17. Sew the waist facing to the lining according to notches. Press the seam allowances towards the lining.



18. Fold and stitch the small pleat on the lining front pieces, according to markings.

19. Join the front facing to the lining in the vertical seam. The lining is longer! Fold the excess lining over the waist facing, to create a fold in the lining.

20. Press the seam allowances towards the lining.

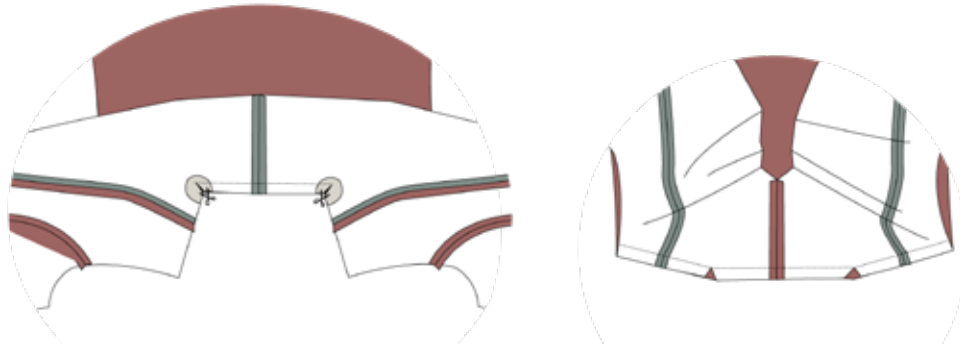




---

21. Sew the back neck/center-back seam of the front facing. Press the seam allowances open.

22. Join the back neck by placing the front piece and the back piece right sides together. Stitch between the markings and secure the seam. Clip notches to the corners of the neckline on the front piece, to be able to turn the fabric and sew the shoulder seams.



**SLEEVE LINING:**

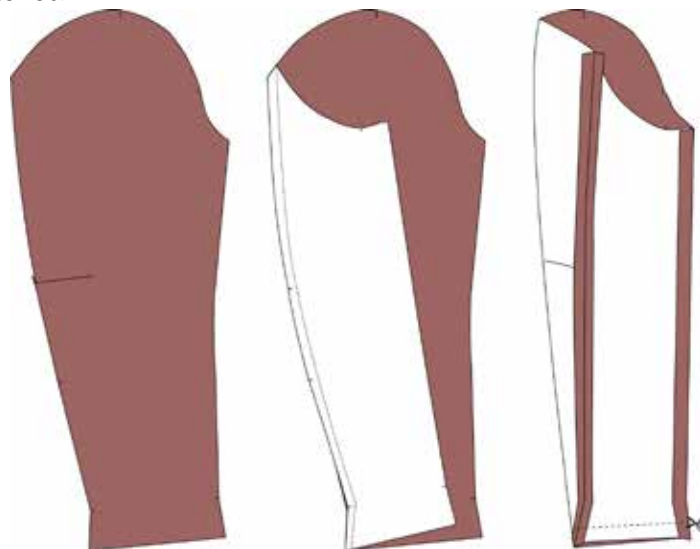
23. Fold the elbow dart into a small pleat.

24. Sew first the long and then the short sleeve seam, right sides together. Press seam allowances open

**NB! LEAVE AN OPENING OF 12 CM IN THE MIDDLE OF ONE OF THE LONG SLEEVE SEAMS. REMEMBER TO SECURE THE SEAM IN BOTH ENDS OF THE OPENING.  
YOU ARE GOING TO USE THIS OPENING TO TURN THE JACKET THROUGH DURING THE FINISHING STEPS.**

25. Cut 2 cm off the hem of the sleeve linings.

26. Set in the sleeve linings to the lining, in the same way as you did for the jacket.



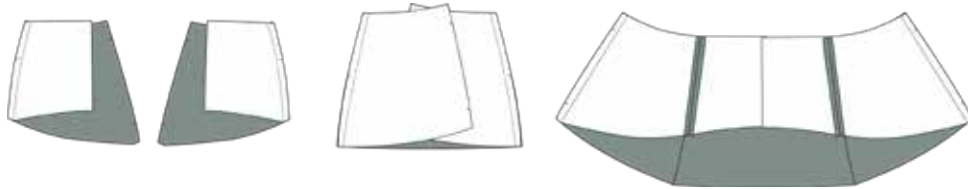


---

**SEW THE PEPLUM:**

27. Join one set of the peplum pieces together at the vertical seams, according to markings and right sides together. Press the seam allowances open.

28. Repeat for the other set of peplum pieces.

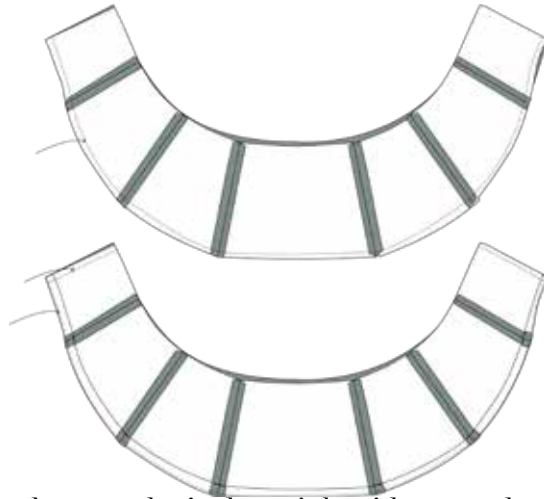


29. Join the two peplums at their hem, right sides together.

30. Understitch the seam allowances.

31. Clip notches to the seam allowances at the curved part of the hem.

32. Sew the ends of the peplum, right sides together.



33. Place the peplum on the jacket, right sides together and stitch. The peplum ends at centre-front.





---

**ASSEMBLE THE JACKET:**

34. Place the lining inside the jacket, wrongs sides together.

35. Join the sleeve lining and the sleeve at their hems, right sides together.

36. Join the front edge/collar, right sides together. Clip a small notch at the overlap to make it possible to turn the jacket.

