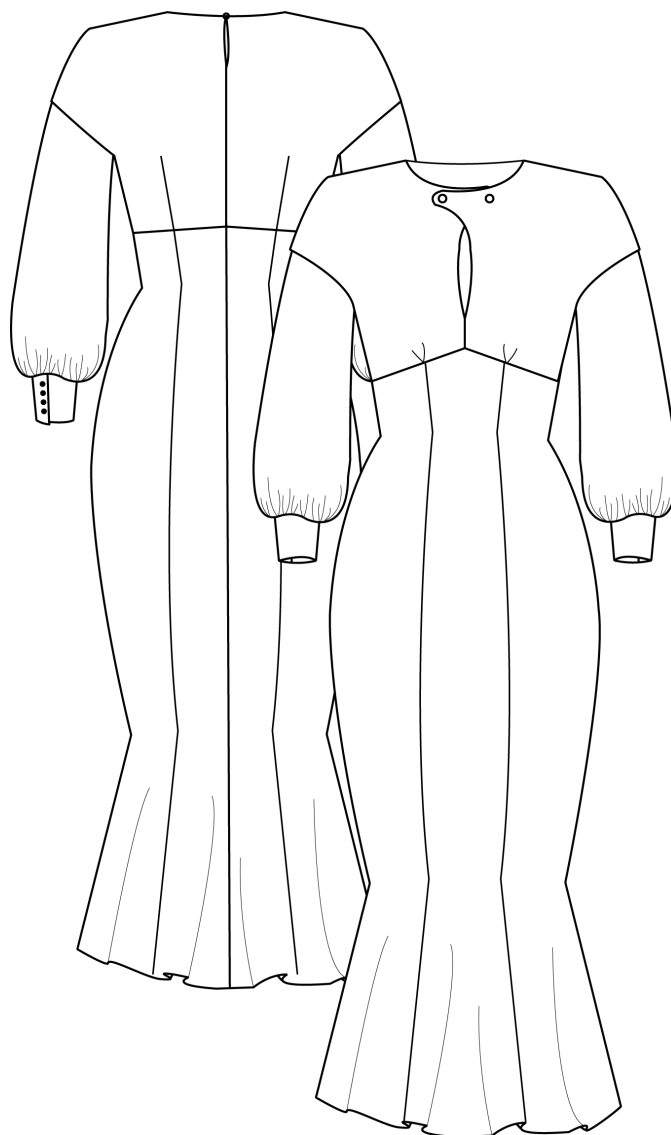




NO. 16 SEVILLA



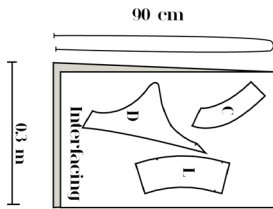
VERSION 3



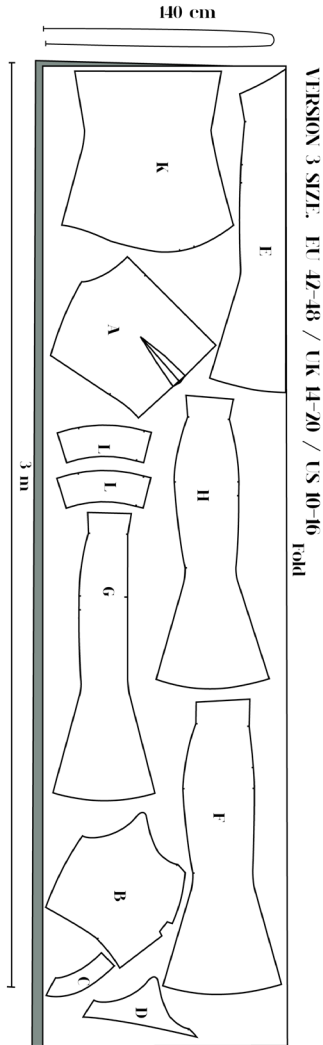


Cutting

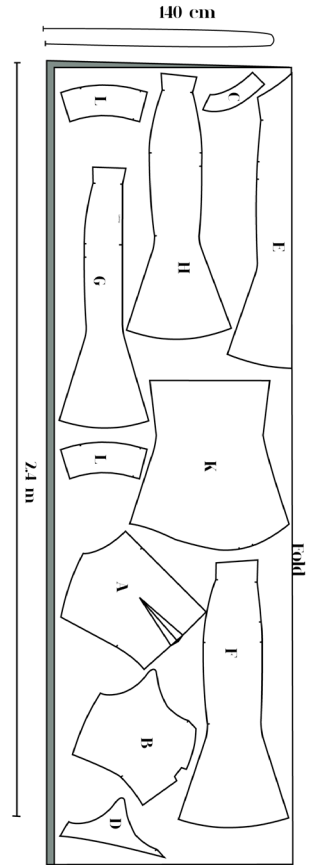
Match the lettered pattern pieces (A, B, C etc.) to the cutting layout plan for the view you have chosen.



VERSION 3 INTERLOCKING SIZE: EU 34-48 / UK 6-20 / US 2-16



VERSION 3 SIZE: EU 42-48 / UK 14-20 / US 10-16
Fold



VERSION 3 SIZE: EU 34-40 / UK 6-12 / US 2-8
Fold

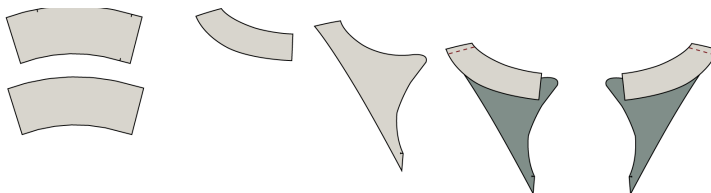


Sewing

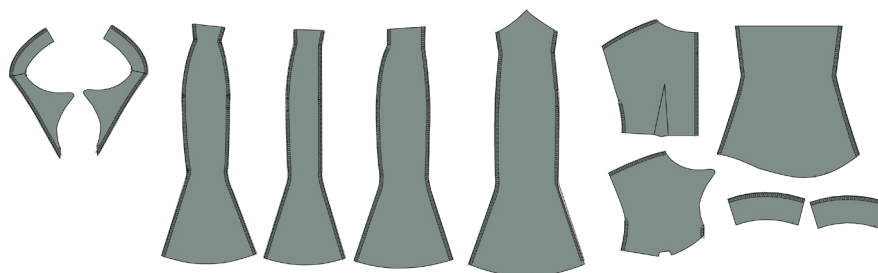
NB! THE PATTERN HAS 1 CM SEAM ALLOWANCES INCLUDED UNLESS OTHERWISE NOTED.

1. Cut all your pieces in fabric, pocket lining, and interfacing
2. Press the interfacing to the facings (C ,D) and to two of the four cuff pieces (L)
3. Sew the shoulder seam of the front and n neck facing. Right sides together.

- RIGHT SIDE
- WRONG SIDE
- INTERFACING

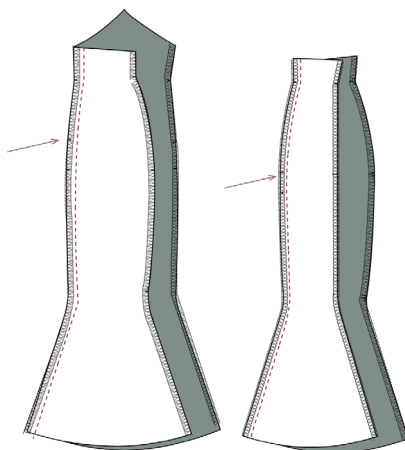


4. Overlock following pieces:
 - the long side of the neck
 - All the long sides of the bottom
 - Shoulder, sleeve opening, side seam, and CB on the bodice.
 - Inner seam on the sleeves
 - The two long seams on the two cuffs with interfacing.



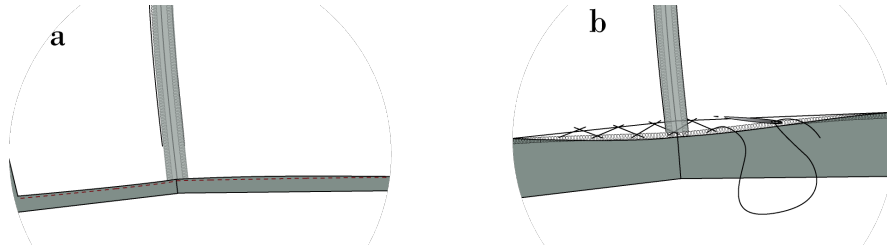
Sew the bottom:

5. Sew CF to the Side-front. Right sides together. Sew according to notches.
6. Sew CB to the side-back. Right sides together. Sew according to notches.





7. Sew the side seams. Right sides together.
8. Press all seams open.
9. Hem the Bottom

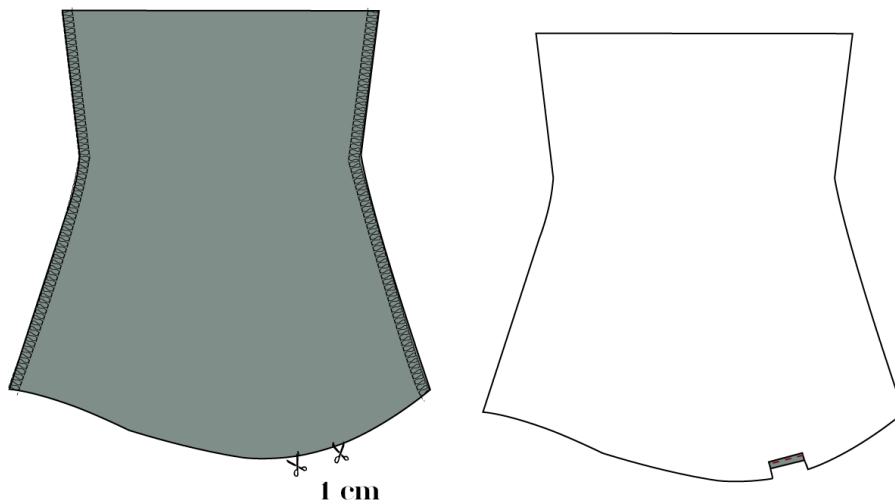


TIP!

- a. If working in light fabrics like silk, viscose or chiffon use a narrow hem like this.
- b. If working in medium weight fabrics like wool, boucle or jacquard hem with a catch stitch like this.

Sew the sleeves

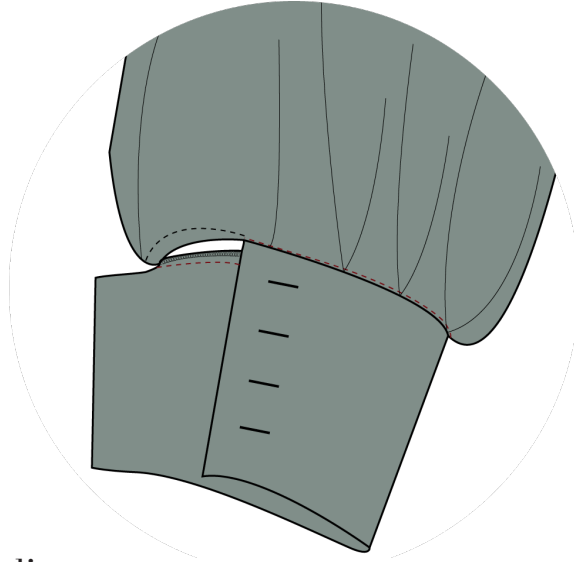
10. At the two notches carefully clip into the seam allowance with 1 cm.
11. Between the notches on the sleeve make a narrow hem of 0.5 x 0.5 cm. See video. This will be the cuff opening.



12. Sew the inner seam of the sleeve, right sides together.
13. Sew the cuffs right sides together – each cuff has a piece with interfacing and one without interfacing.
14. Turn and press the cuff.

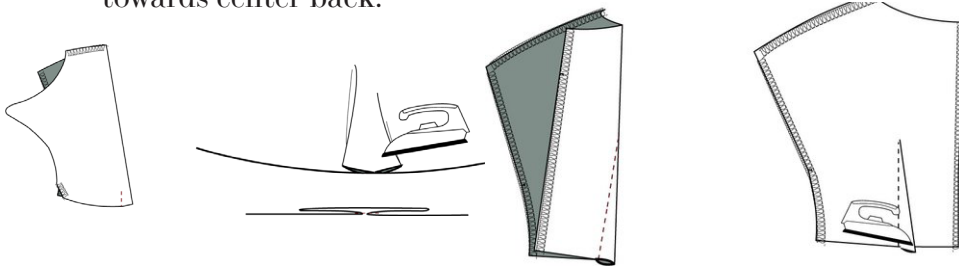


15. Gather the sleeve to fit the cuff.
16. Place the cuff part with no interfacing with right sides together to the sleeve and sew.
17. Turn and press the seam allowance into the cuff
18. Sew the cuff to the sleeve by stitch in the ditch.
19. Sew buttonholes on the overlap.
20. Sew on buttons.

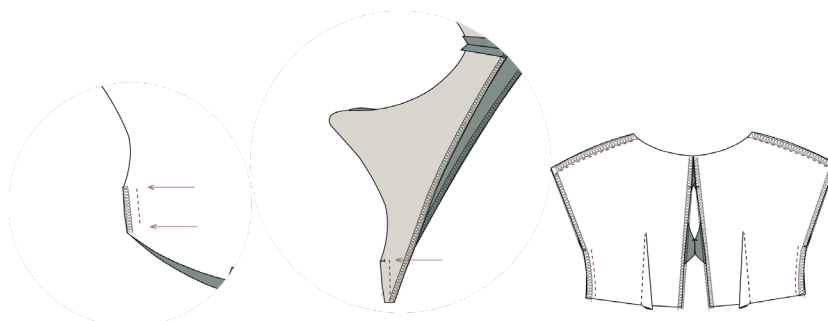


Sew the bodice

21. Sew the Pleat on the front piece, right sides together. Press it like a box pleat.
22. Sew the darts on the back piece, right sides together. Press towards center back.

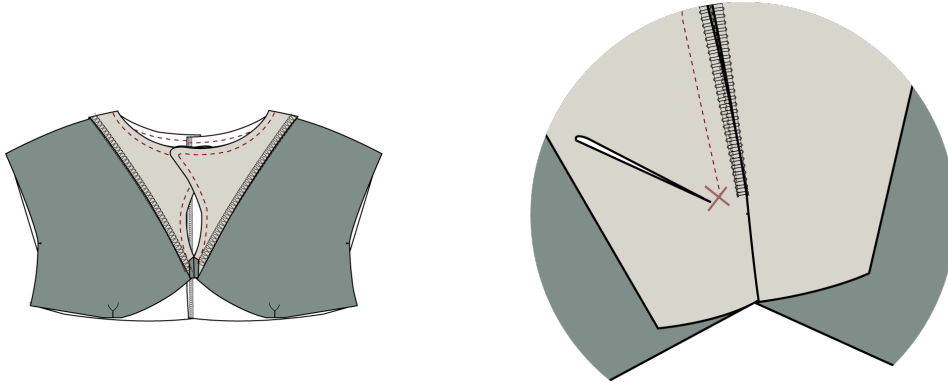


23. Sew CF. Start 1 cm from the bottom and stop at the notch, right sides together. Remember to backstitch.
24. Sew front neck facing at CF, right sides together. Start at the notch, sew to the bottom.
25. Sew the shoulder seam, right sides together.
26. Sew the side seam, from bottom to notch, right sides together.

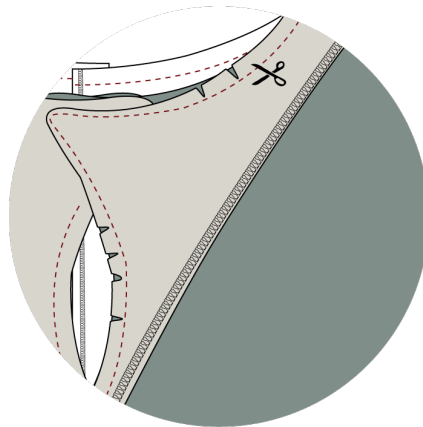




-
27. Press all seams open.
 28. Place the neck facing to the neckline of the bodice, right sides together. Sew from CF to CB. At CF it is important to stop at the last stitch from the CF seam and not to get the seam allowance into the seam. Repeat on the other side.

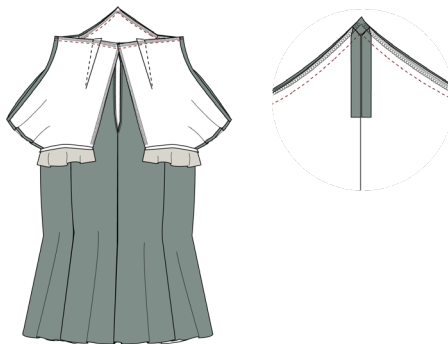


29. Under stitch the neck facing and front neck facing as long as you can get. Clip notches to the seam allowance.
30. In the small round overlap cut the seam allowance down to 0,5 cm. Turn and press the neckline.



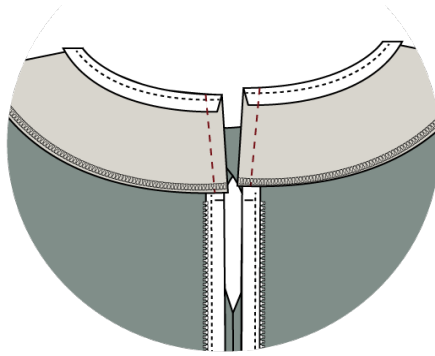
Assemble the dress:

31. Sew the Bodice to the skirt in the waist. Right sides together.
32. Overlock the seam, all layers together.
33. Sew the zipper to the CB. Stop the zipper at the notch.

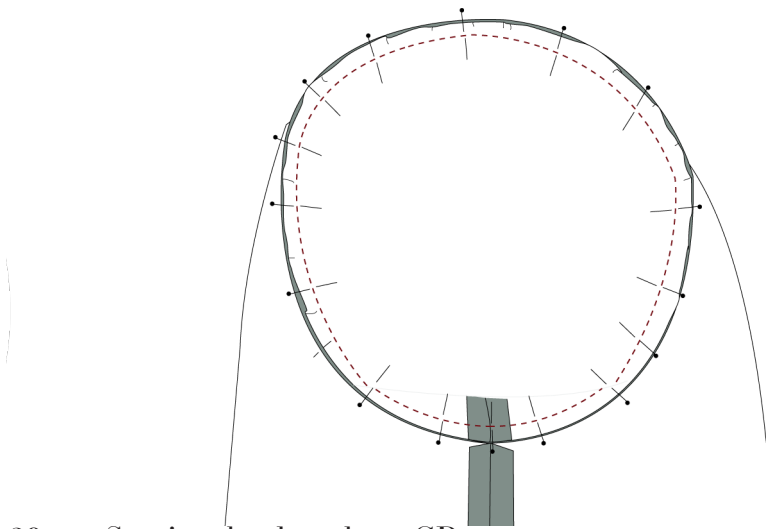




-
34. Fold the neck facing over the zipper. Right sides together. Sew the zipper in between the fabric. Turn and press.
 35. Stitch the CF neck facing to the seam allowance.



36. Pin and sew sleeves to the bodice.
37. Finish the seam with an overlock. Press seam into the sleeve.



38. Sew in a hook and eye CB
39. Place the two buttons at the front and sew them in.

