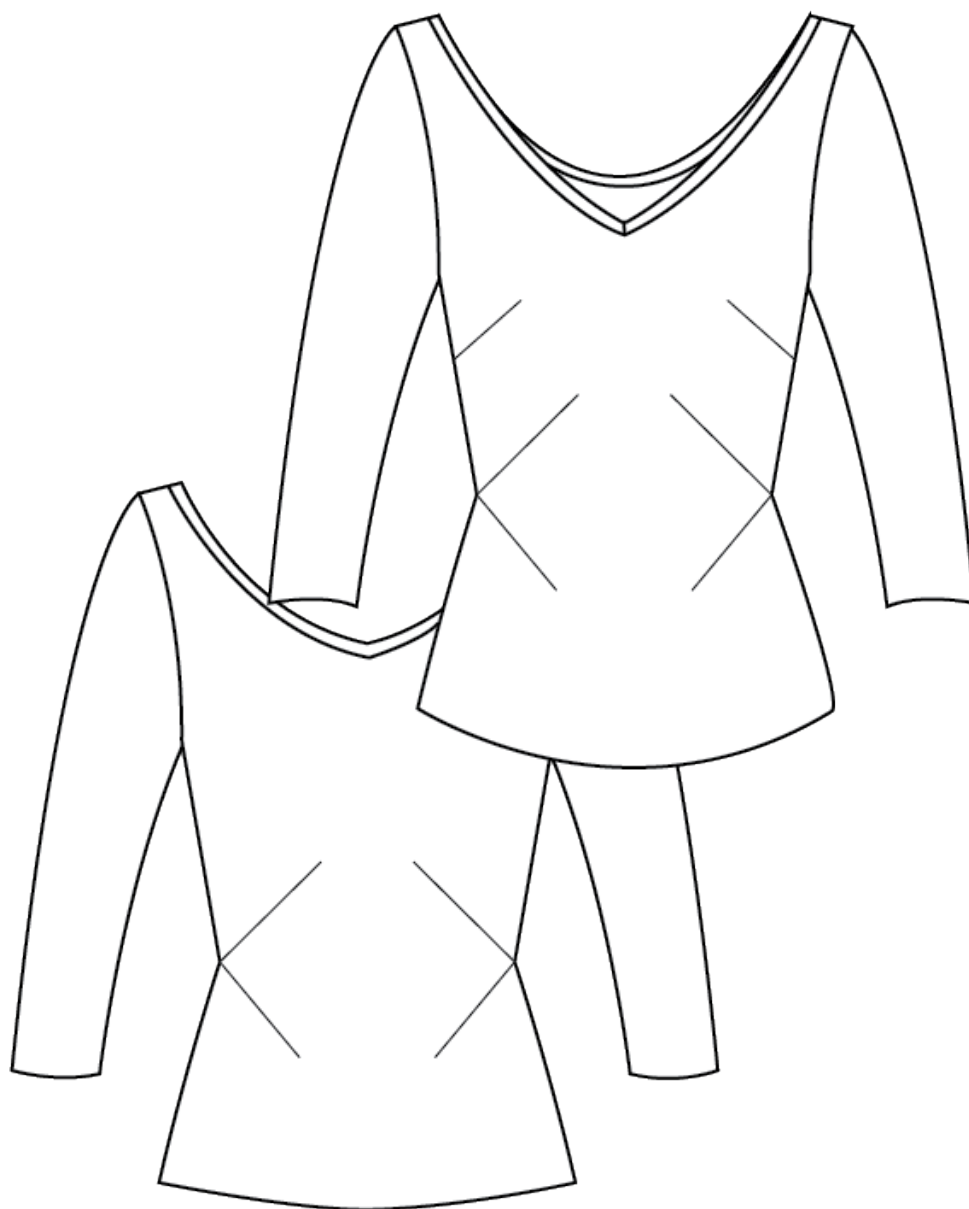
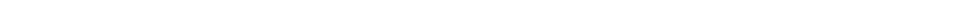




NO. 25 PENHOÛËT



VERSION 3



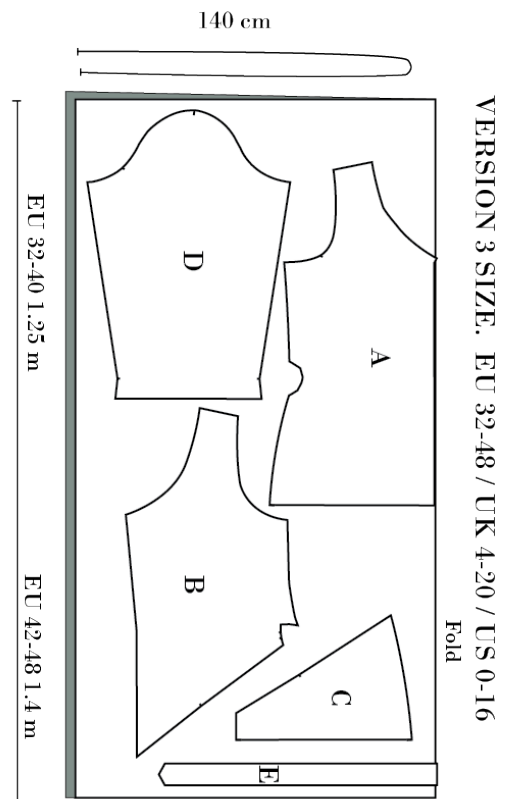
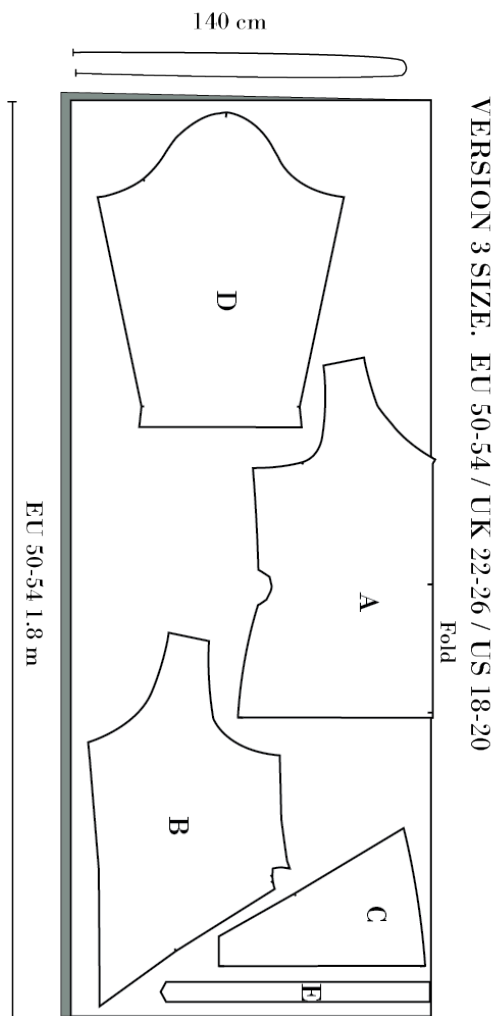


Cutting

On each pattern piece, you will find a capital letter. On the cutting layout plan, you will find the same capital letters so that you can easily see which pattern pieces to use for the view you have chosen.

YOU WILL NEED THE FOLLOWING PATTERN PIECES:

A, B, C, D, E

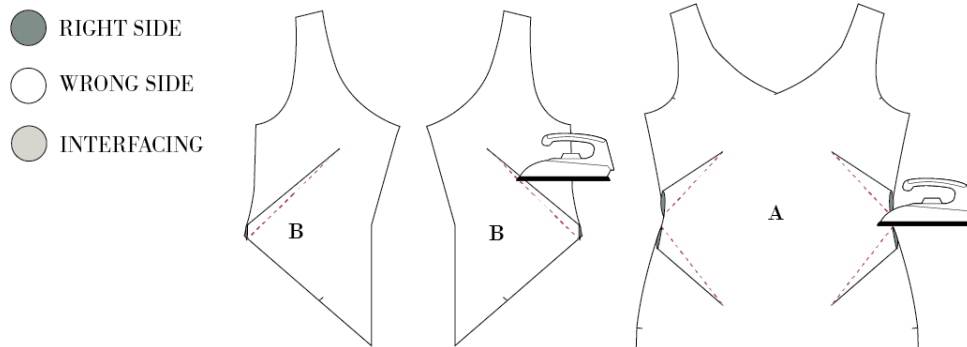




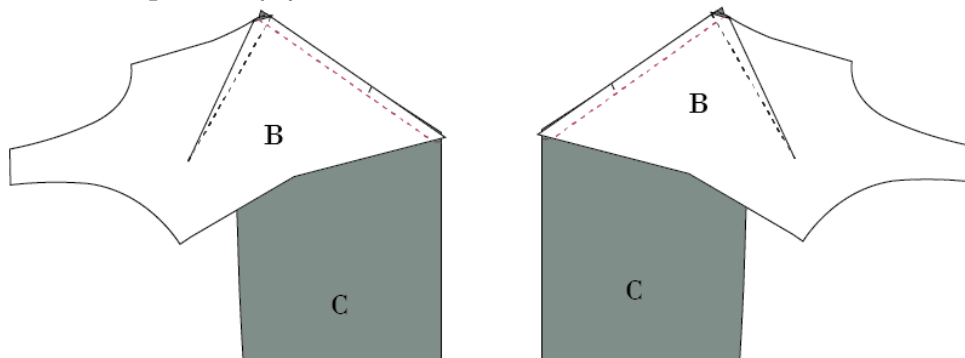
Sewing

NB! THE PATTERN HAS 1 CM SEAM ALLOWANCES INCLUDED UNLESS OTHERWISE NOTED.

1. Cut all your pieces in fabric as needed.
2. Sew the four darts on the front piece (A) and the two darts on the back (B) right sides together. Fold according to the notches and markings.
3. Press the darts on the back (B) upwards, and the darts on the front (A) in opposite directions from each other.

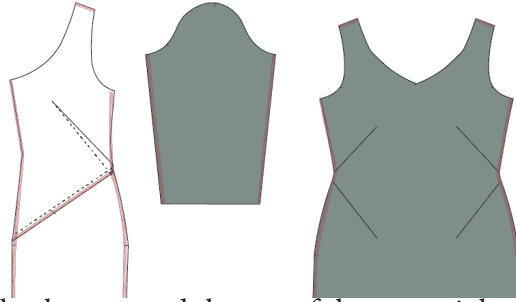


4. With right sides together, align the waist edges of the lower back (C) and the top back. (B) matching the notch at the seam. Pin and sew.



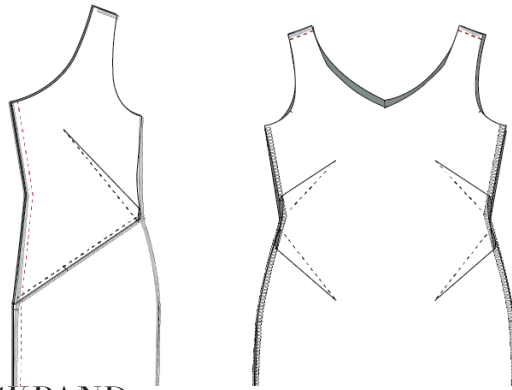
5. Overlock

- The seam on the back piece.
 - The side seams of front and back – fold the seam of the back downwards.
 - The shoulder seams.
 - The centre back seams separately.
 - The inner seams of the sleeves.
-



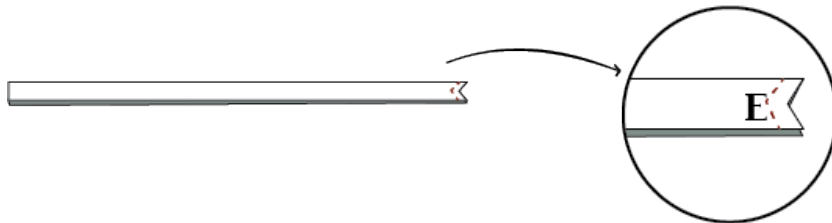
6. Sew the centre back seam and the top of the vent, right sides together. Press seam open

7. Sew the shoulder seams, right sides together. Press seams open.



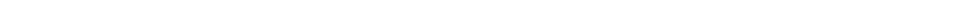
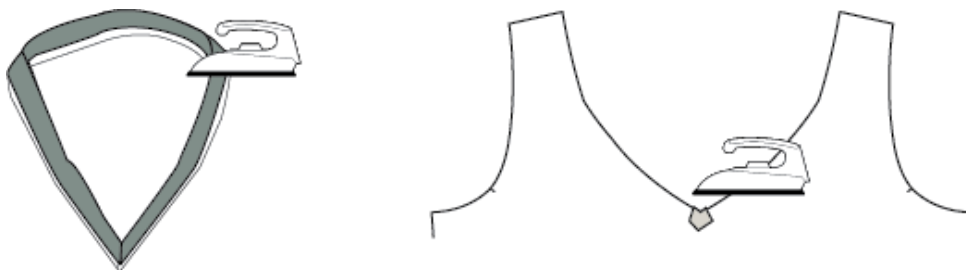
SEW THE NECKBAND

8. Sew the neckband (E), right sides together at the v-shaped ends.



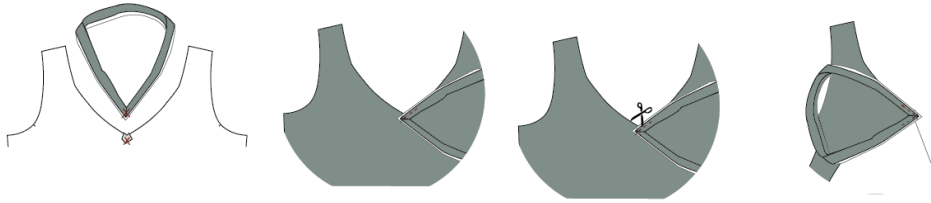
9. Fold the neckband on the long edge, wrong sides together and press.

10. Press a small piece of interfacing to the wrong side of the v of the neckline on the body, not the neckband.



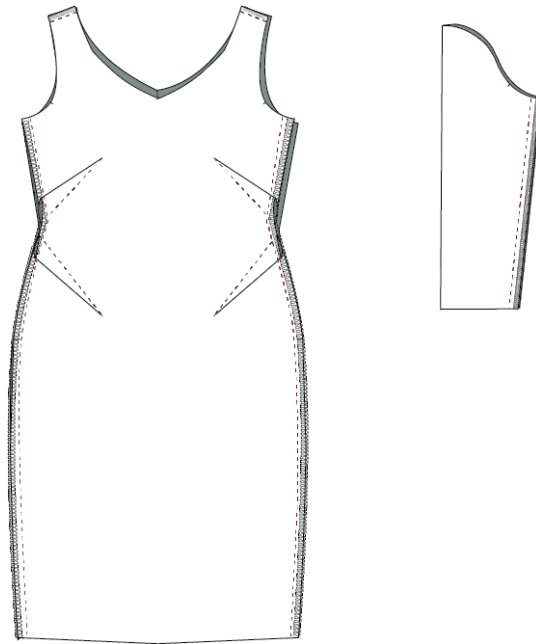


-
11. Mark the sewing line in the v on both the dress and the neckband.
 12. Pin the neckband to the neckline at one side of the v, right sides together.
 13. Sew down approx. 2.5 cm to the centre of the v and backstitch.
 14. Cut the v, **ONLY** cut in the dress, then you can turn the neckband and sew the other side of the v.
 15. Now sew the rest of the neckline. Match the notches on the neckband to the shoulder seams and centre back. There is a bit of ease, the neckband is a bit smaller than the neckline for a better fit.



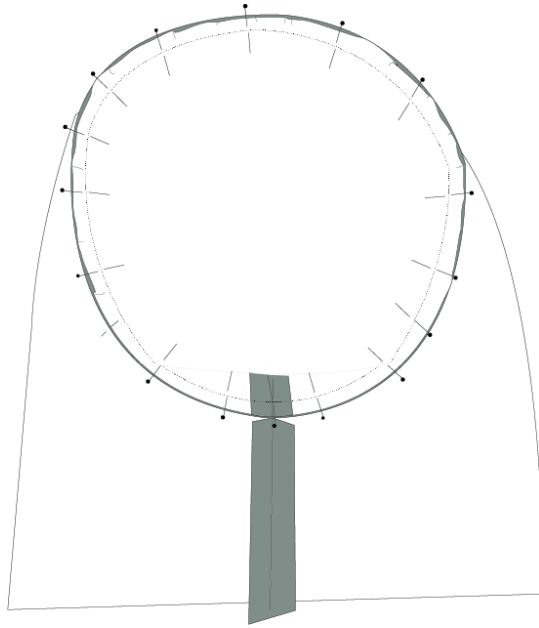
ASSEMBLE THE BLOUSE

16. Align the darts in the side seams and sew side seams, right sides together. Press seams open
17. Sew the inner seam of the sleeves press seams open.



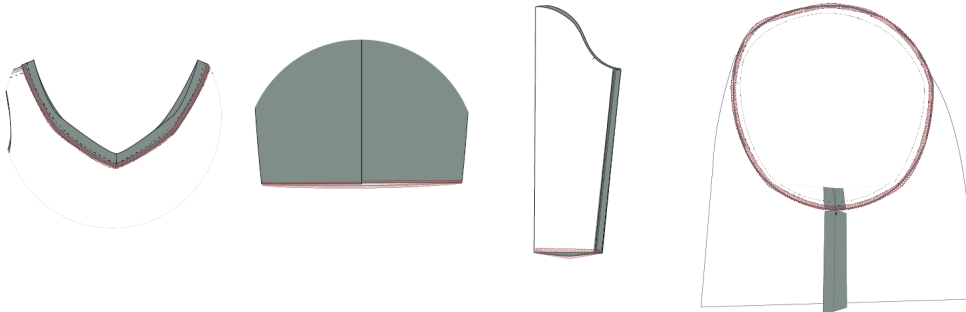


18. Sew the sleeves to the armscye.



19. Overlock

- The raw edge of the neckband
- The hemline
- The raw edge of the armscye.
- The sleeve hemline



20. Press the hemline on both sleeves and bottom with 3 cm

21. Hem the sleeve and the bottom of the dress, with a top stitch or an invisible catch stitch.
