

How to print

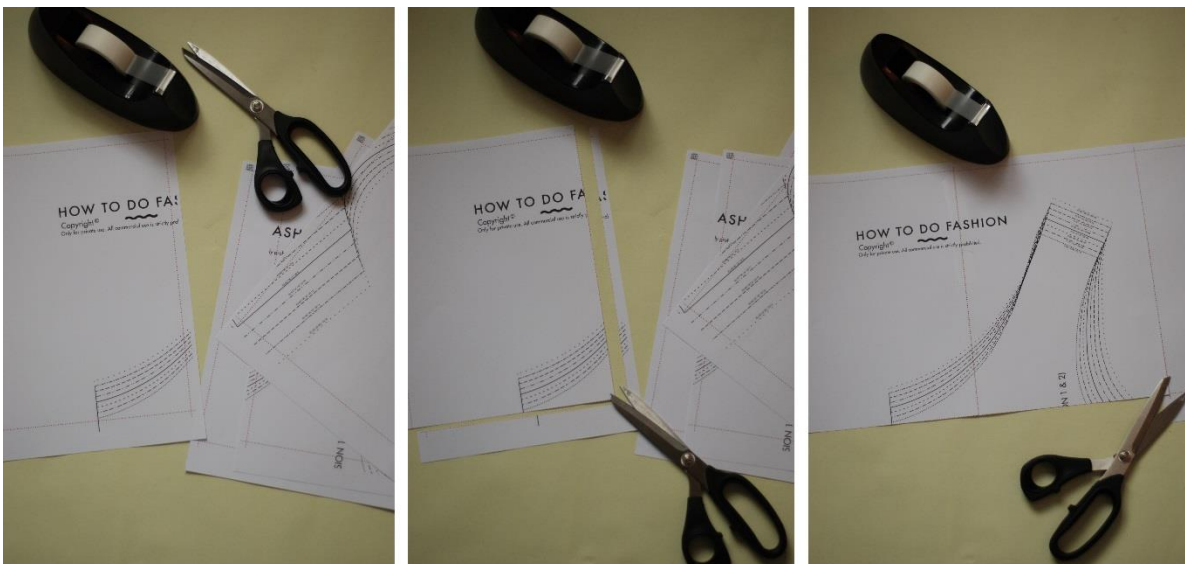
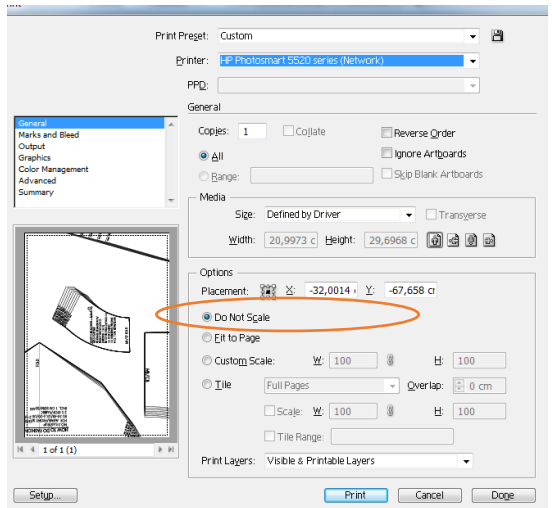
The most important thing when you are printing a PDF pattern is to be sure **not to scale**. If you are scaling when printing the pattern, the pattern will not end up with the right dimensions.

When printing it can be called different things depending on the printer options; Page scaling, Fit to page, print to actual size or do not scale.

To be sure, you are printing correctly, start to print page 3. Here you will find a 10 x10 cm box. Measure and see if the measurements are correct. If it is correct, you can print all pages.

Assemble the sheets

The easiest way to assemble all sheets is by starting to cut away the bottom and the right side of the sheets. Cut in the red dotted line.



Now you can tape together your pattern, see overview (last page). When you are done, you are ready to make many pretty pieces of garments.

The Pattern are INCL. 1 cm (3/8 inch) seam allowance.

Guides, inspiration and video

On howtodofashion.com you can find a lot of extra material – adjustment guide, tips and tricks and online sewing directions with videos and a lot of inspiration.

Sewing Directions and cutting lay plan

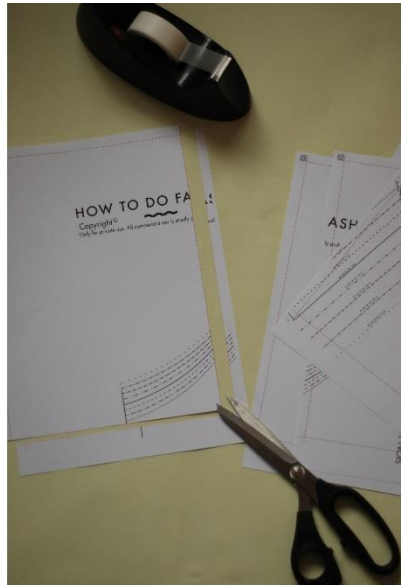
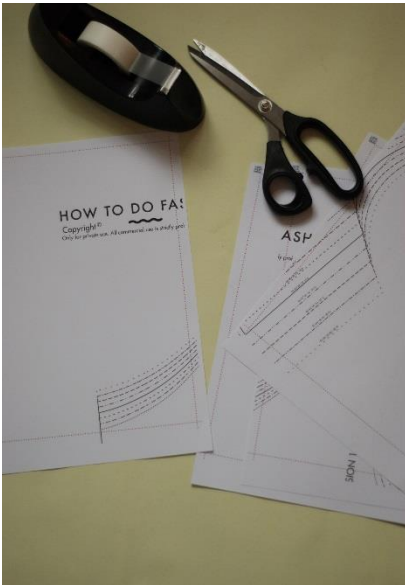
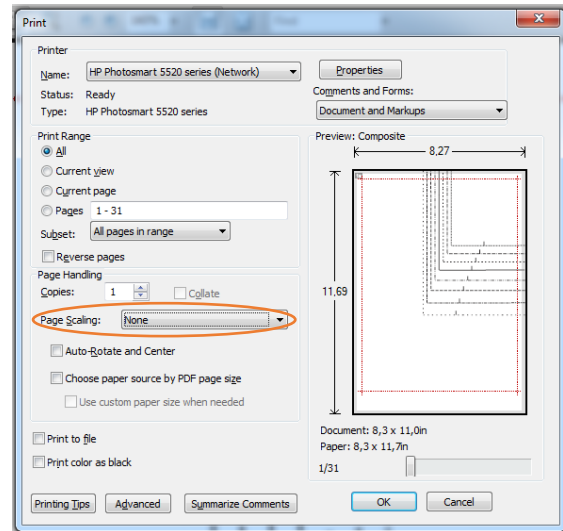
You will find all sewing directions on howtodofashion.com, both an online with a lot of extra help. And printable sewing directions for all versions.

print og klargøring af mønsteret

Det vigtigste når du skal til at printe er at du ikke skalere, hvis det sker så bliver mønsteret ikke i de rigtige dimensioner. Det kan hedde flere forskellige ting her er nogle eks. (Ingen skalling, print til faktisk størrelse, Do not scale, No page skalling, print to actual size.) På side 3 finder du en kontrol boks der er 10 x 10 cm. Hvis du vil være sikker på at du har indstillet din printer rigtig, skal du starte med at printe den side ud og lave tjek mål.

Sæt mønsteret sammen

Den nemmeste måde er at klippe bunden og højre side af på alle mønstre, klip i den røde stiplede linje.



Derefter samler du mønsteret efter mønster oversigten (sidste side). Når det er gjort så er du klar til at lave mange smukke stykker tøj.

Dette mønster er INKL. 1 cm Smørum. Med mindre andet er angivet

Hjælp, inspiration og videovejledninger

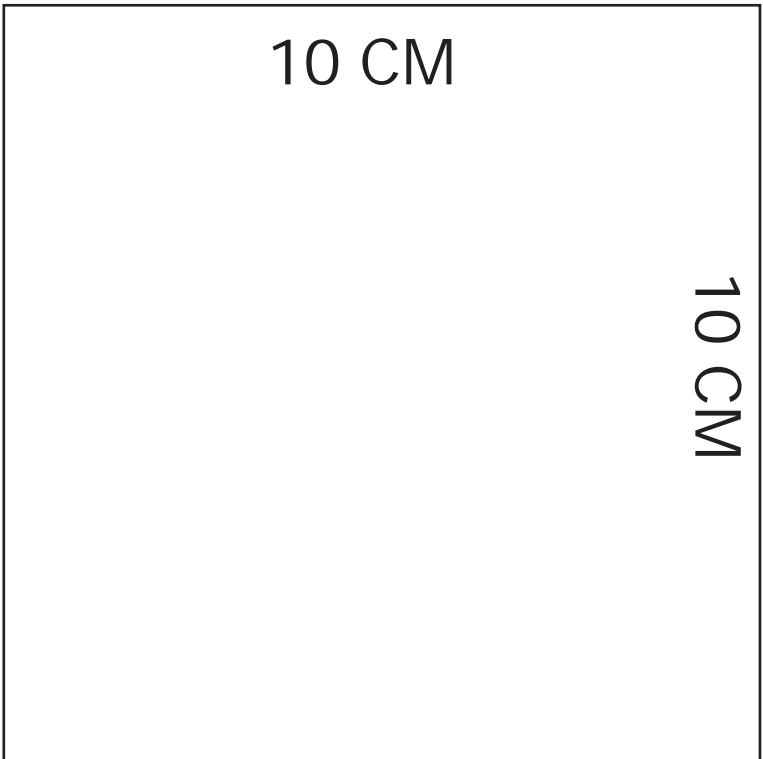
På hjemmesiden howtodofashion.dk kan du finde en masse ekstramateriale til dit mønster, der er både en masse ekstra hjælp i den online syvejledning. Men der er også mange gode tips og tricks og inspiration at hente.

Syvejledninger

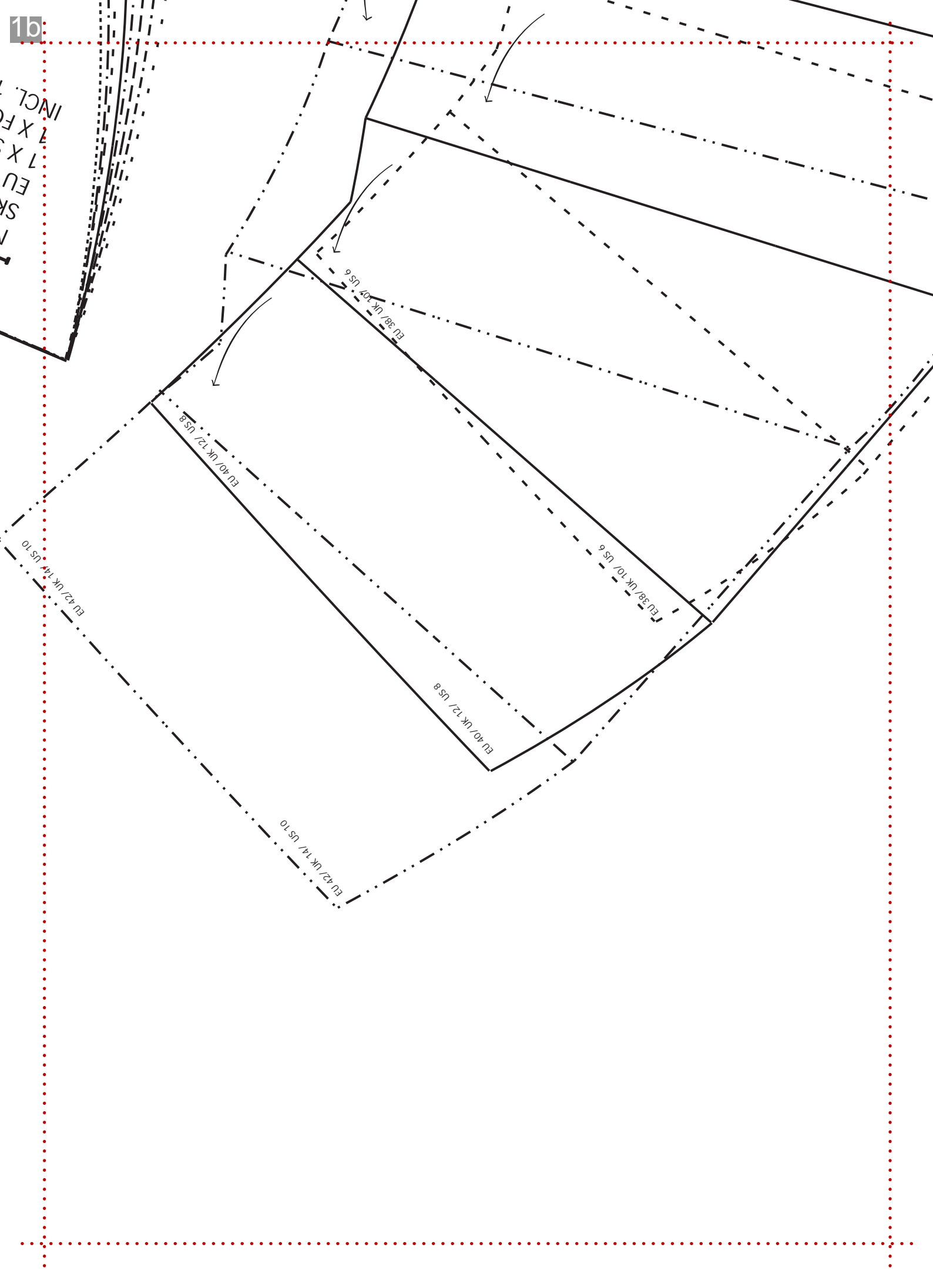
På hjemmesiden howtodofashion.dk finder du alle syvejledninger, både online vejledning med en masse ekstra hjælp og en printvenlig.

1a

HOW TO DO FASHION
NO. 10 STOCKHOLM
SKØN/PEPLUM (VERSION 3)
EU 34-48/UK 6-20/US 2-16
1 X STOF/FABRIC
1 X FOER/LININGV
INCL. 1 CM SØM/SEAM ALLOWANCE

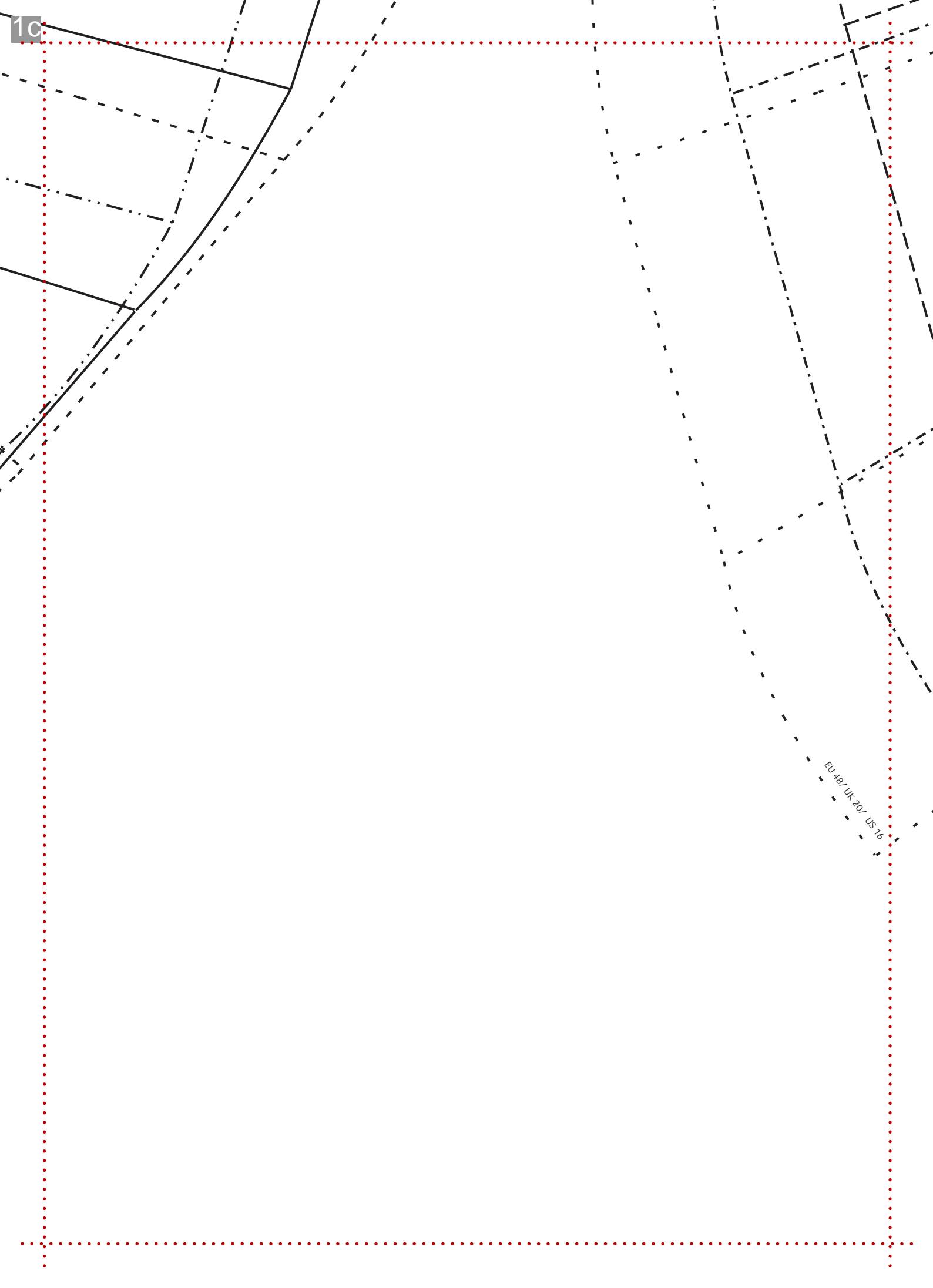


EU 42/UK 14/US 10



INCL.
7 X F
7 X S
EU
SK
T

1c



EU-82/UK-20/US-16

1d

FINANCE

SKHOLM
VERSION 3)
US 12-16

DO FASHION P

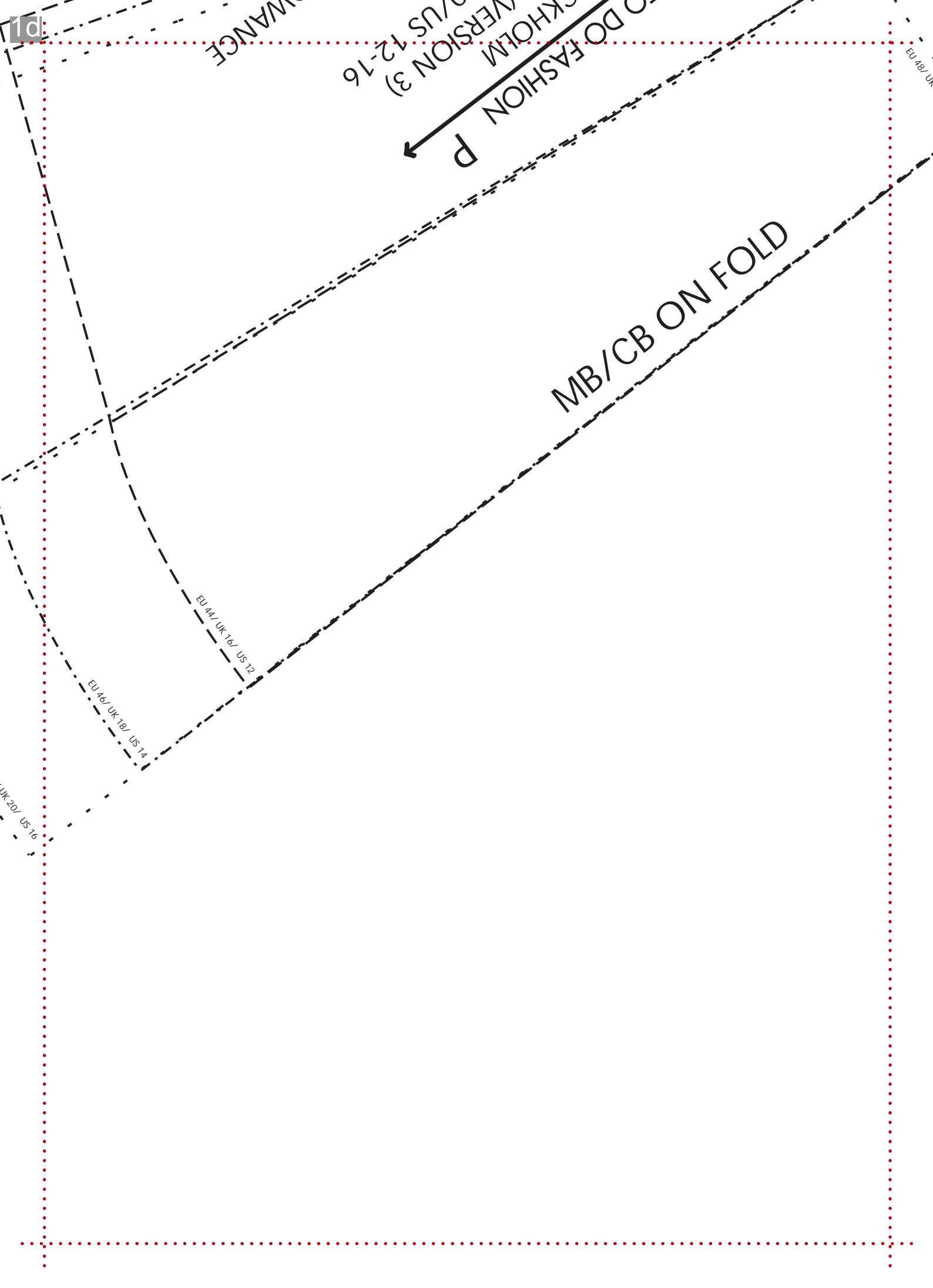
MB/CB ON FOLD

EU 44/ UK 16/ US 12

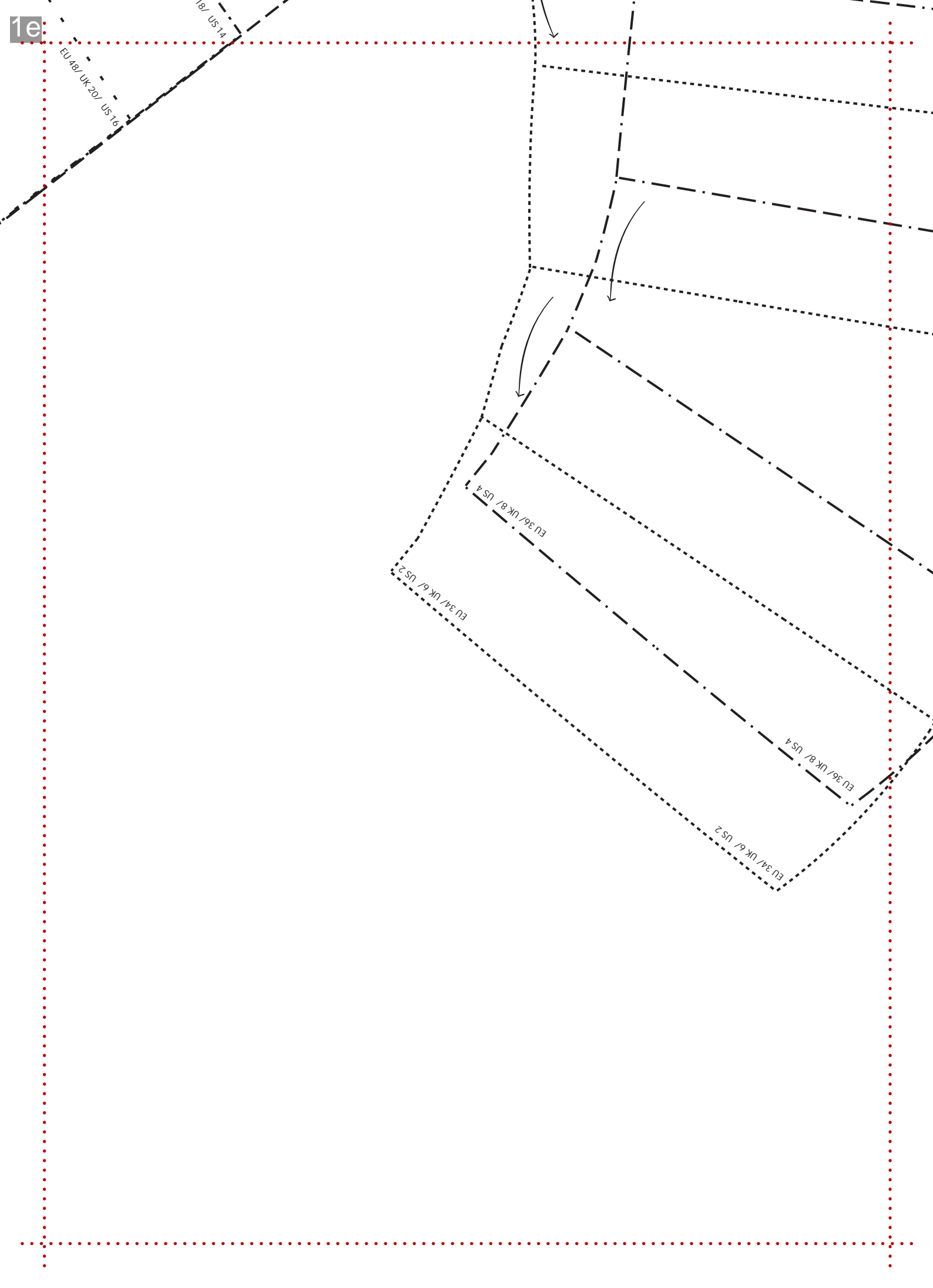
EU 46/ UK 18/ US 14

UK 20/ US 16

EU 48/ UK



1e



EU 48/ UK 20/ US 16

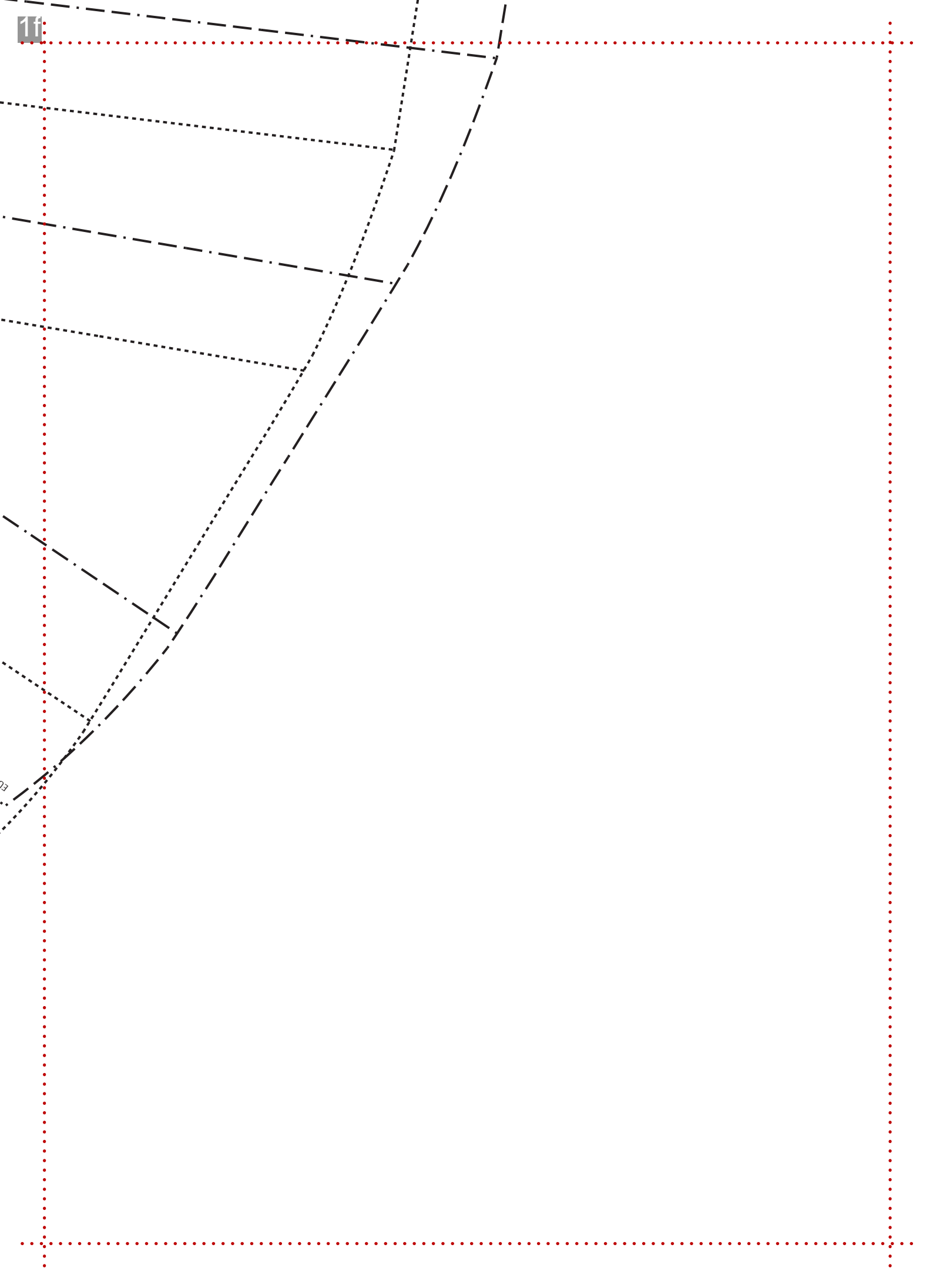
18/ US 14

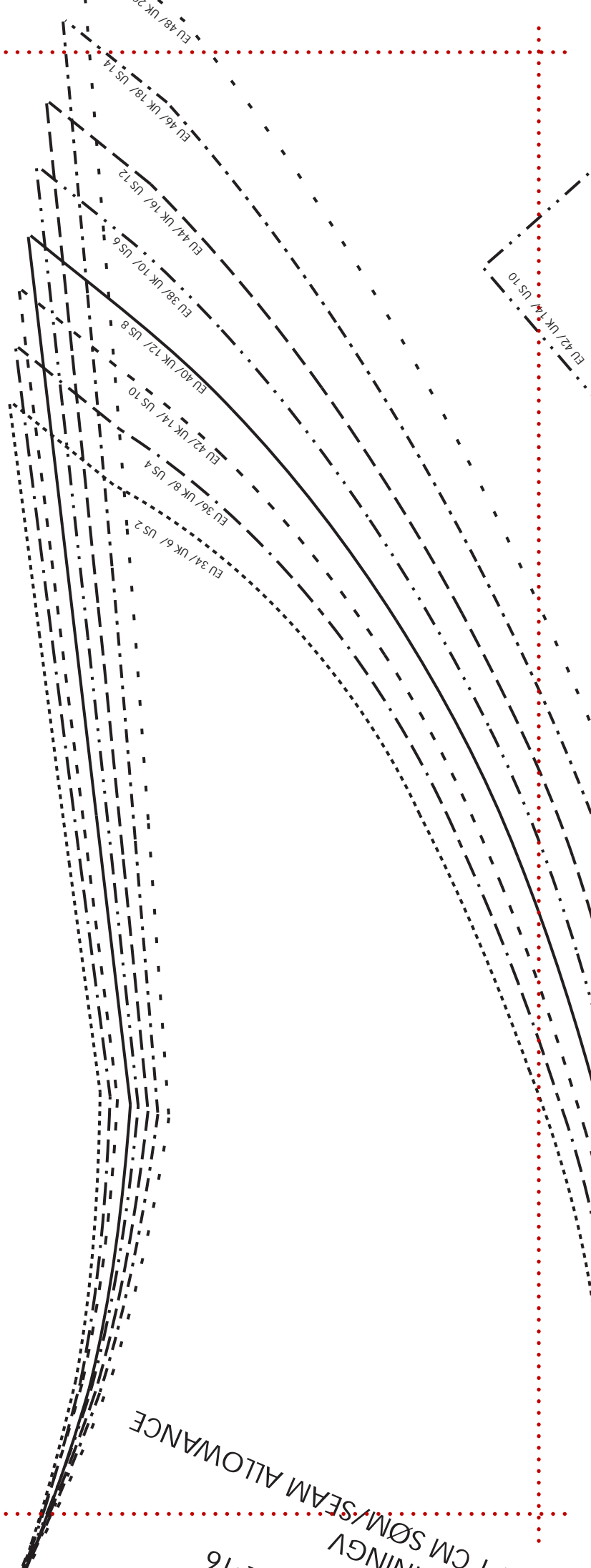
EU 36/ UK 8/ US 4

EU 34/ UK 6/ US 2

EU 36/ UK 8/ US 4

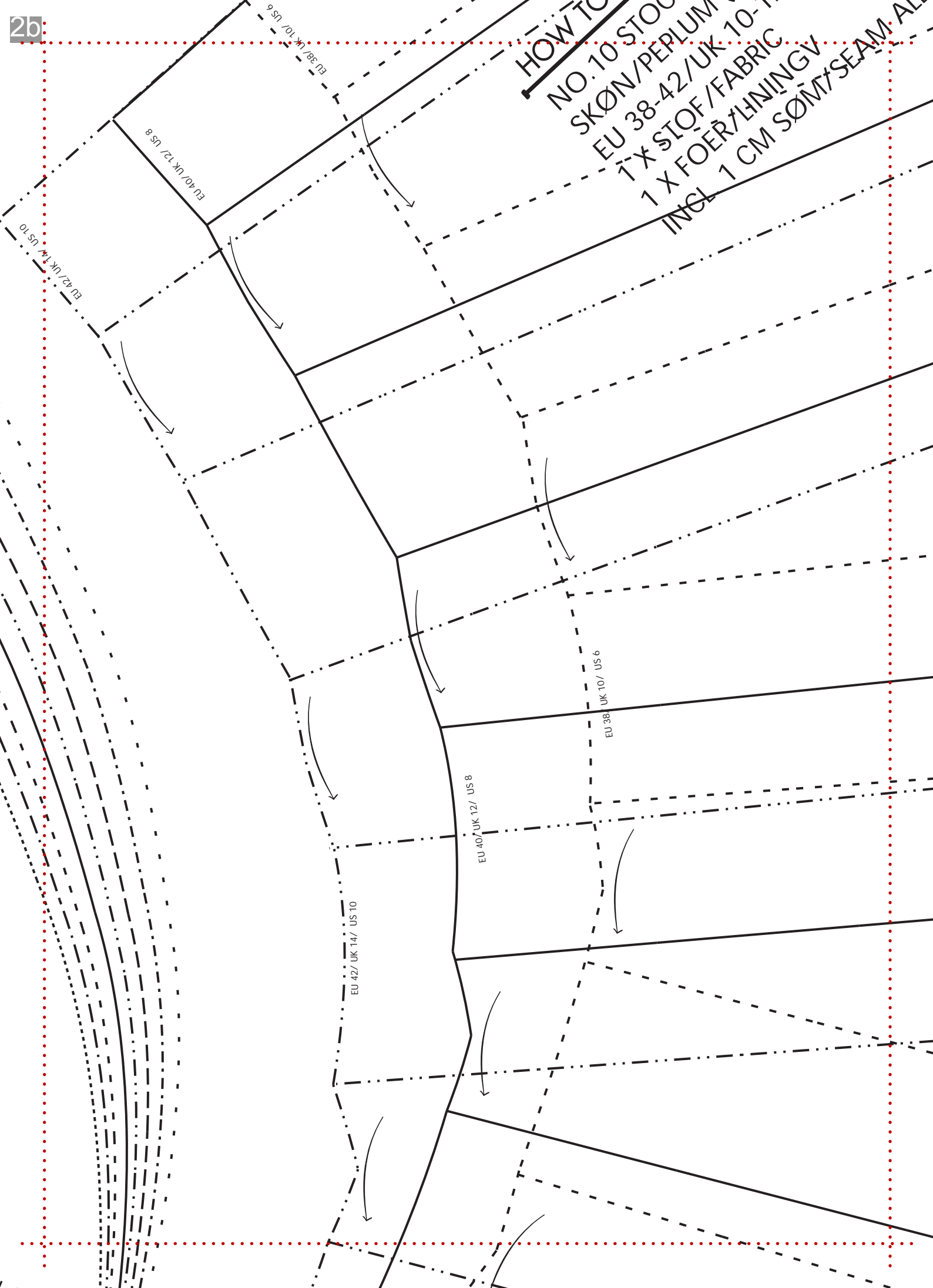
EU 34/ UK 6/ US 2

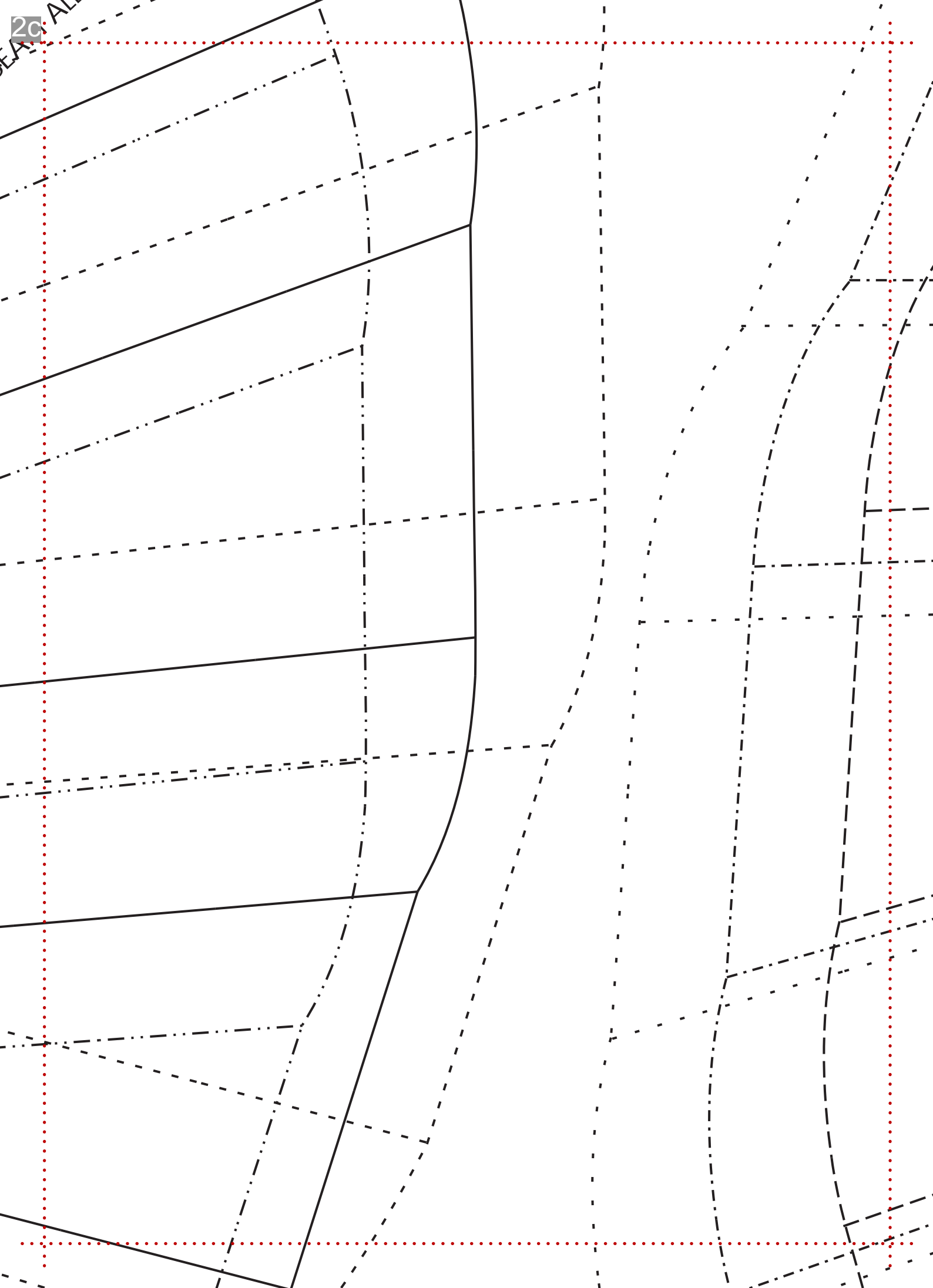




HOW TO

NO. 10 STOC
 SKØN/PEPLUM
 EU 38-42/UK 10-14
 1 X STOF/FABRIC
 1 X FOER/LNINGV
 INCL 1 CM SØM/SEAM AL





2c



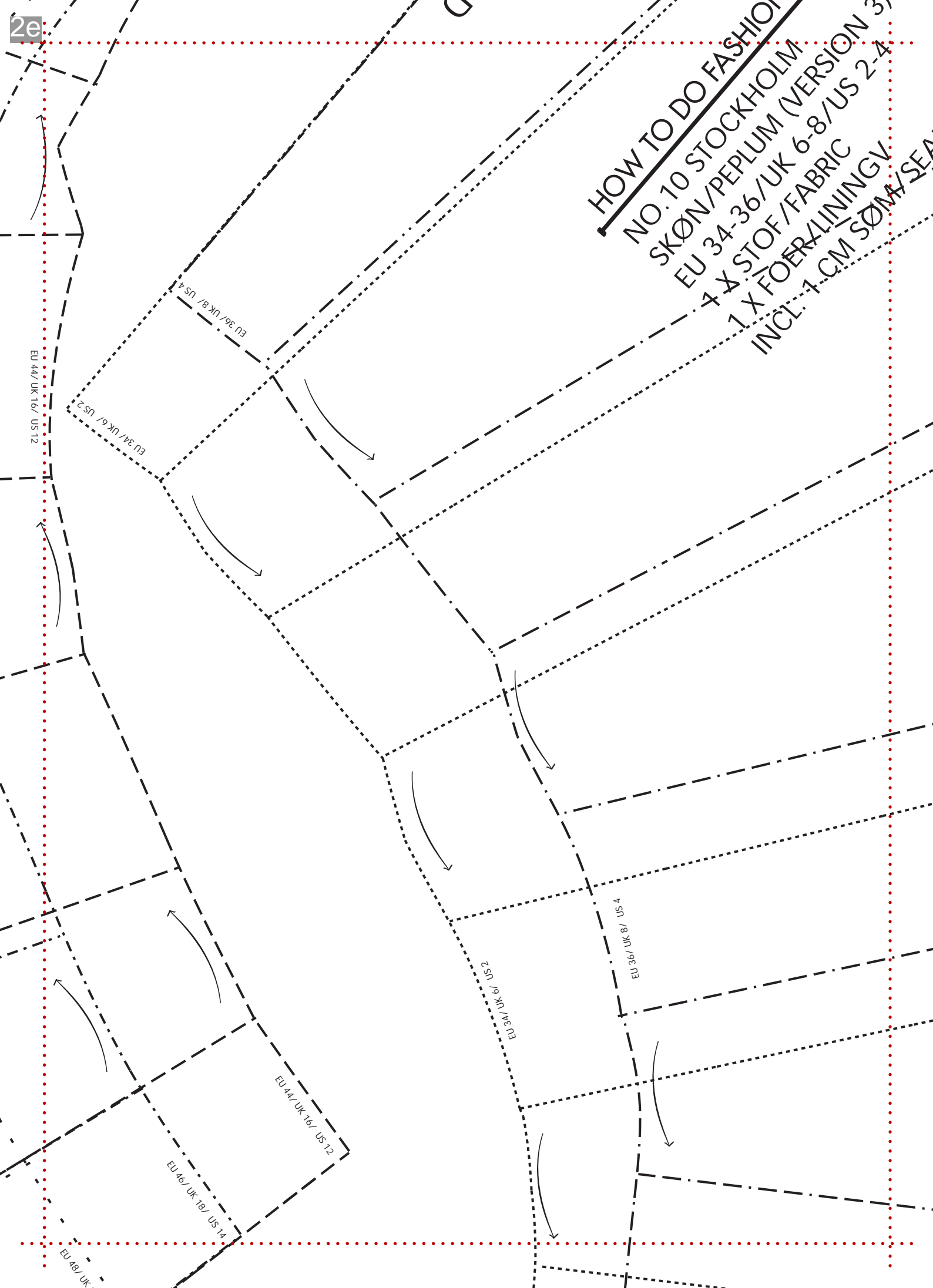
EU 44/ UK 16/ US 12

EU 46/ UK 18/ US 14

EU 48/ UK 20/ US 16

HOW TO DO FASHING
 NO. 10 STOCKHOLM
 SKØN/PEPLUM (VERSION 3)
 EU 44-48/UK 16-20/US 12-16
 1 X STOF/FABRIC
 1 X FOER/REININGV.
 INCL. 1 CM SEAM ALLOWANCE

HOW TO DO FASHION
NO. 10 STOCKHOLM
SKØN/PEPLUM (VERSION 3)
 7 X STOF/FABRIC
 1 X FOERLININGV
 INCL. 1 CM SØM/SEA



EU 44 / UK 16 / US 12

EU 36 / UK 8 / US 4

EU 34 / UK 6 / US 2

EU 36 / UK 8 / US 4

EU 34 / UK 6 / US 2

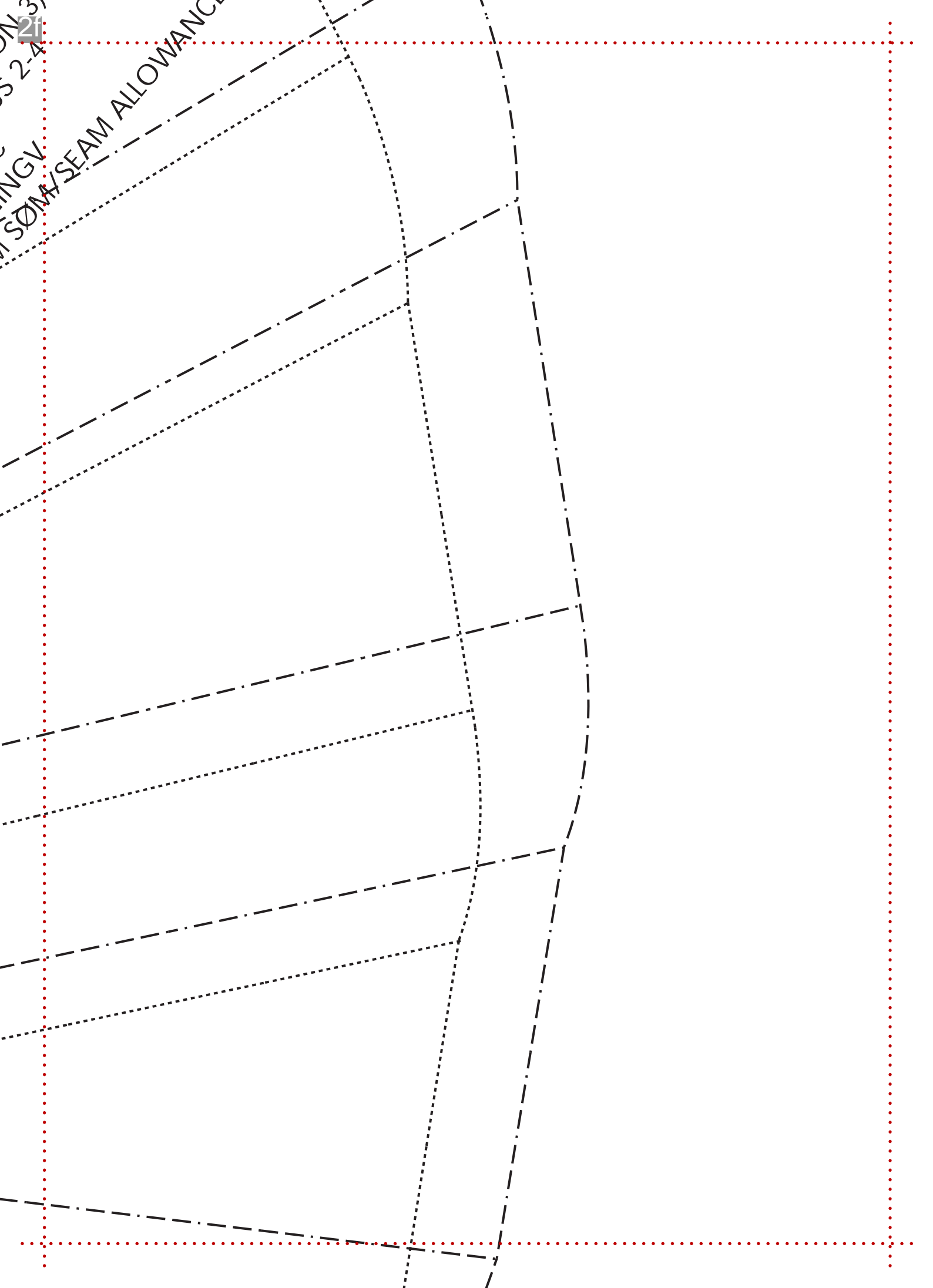
EU 44 / UK 16 / US 12

EU 46 / UK 18 / US 14





EU 48 / UK 18 / US 14

21
S 2-4

INGV
SEAM ALLOWANCE



SYMBOL

-  Fold i pilens retning / Fold in direction of arrow
-  Trådretning / Grainline
-  Samle hak / Notches
-  Indsnits punkt / Dart point

EU: 34/ U
 EU: 36/ U
 EU: 38/ U
 EU: 40/ U
 EU: 42/ U
 EU: 44/ U
 EU: 46/ U
 EU: 48/ U

EU 48/ UK 20/ US 16
 K 18/ US 14

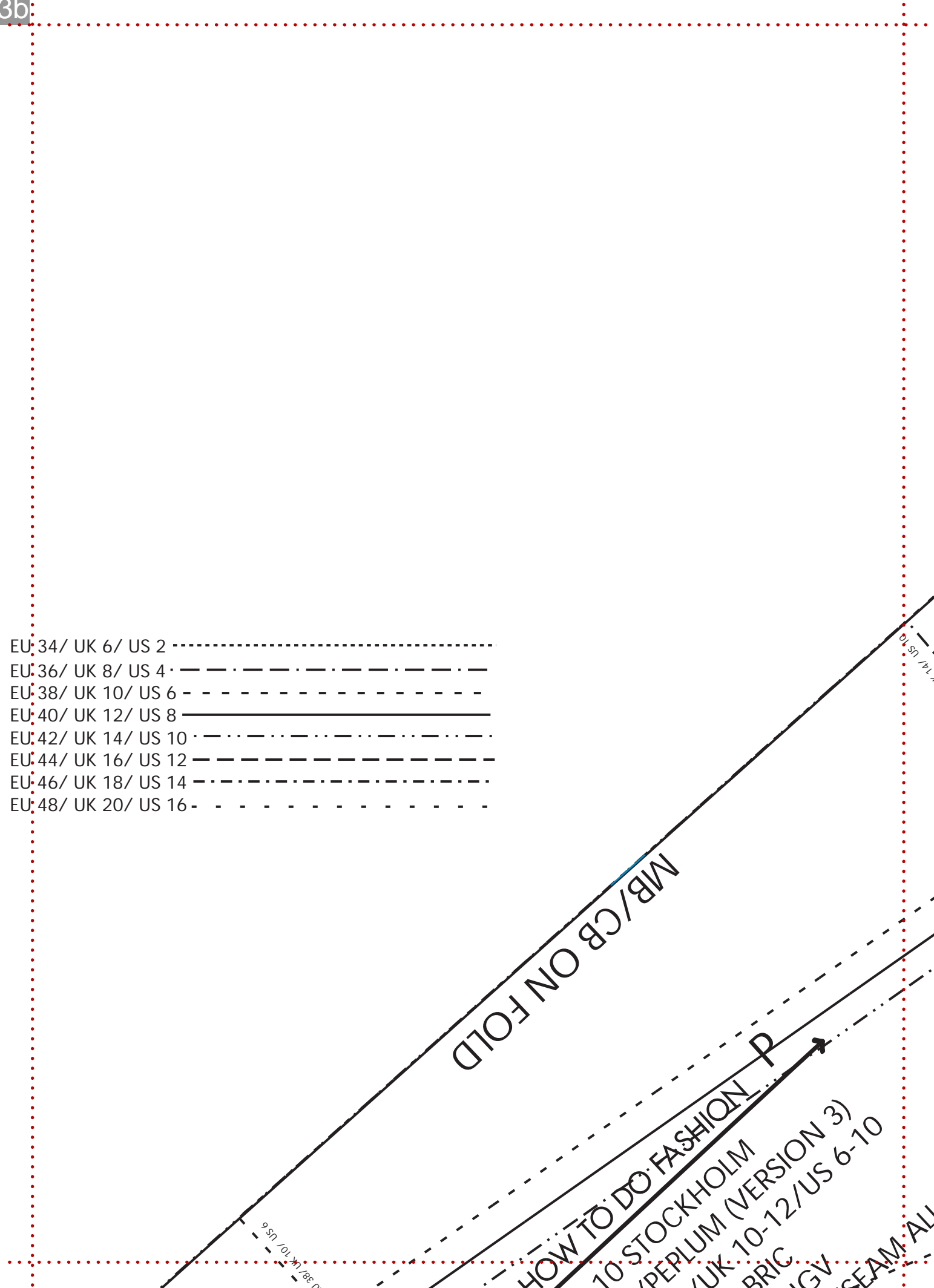
- EU: 34/ UK 6/ US 2
- EU: 36/ UK 8/ US 4
- EU: 38/ UK 10/ US 6
- EU: 40/ UK 12/ US 8
- EU: 42/ UK 14/ US 10
- EU: 44/ UK 16/ US 12
- EU: 46/ UK 18/ US 14
- EU: 48/ UK 20/ US 16

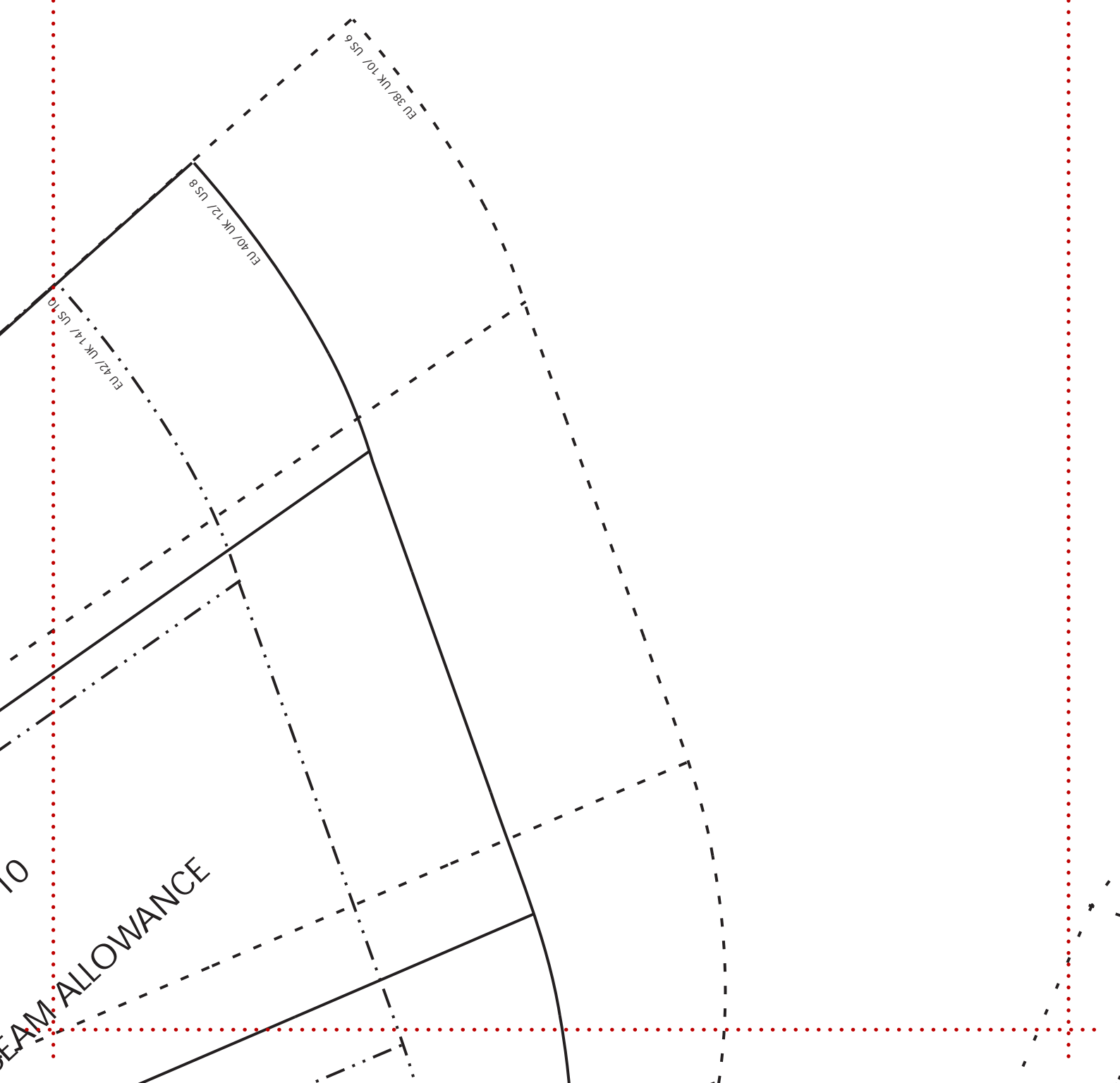
MB/CB ON FOLD

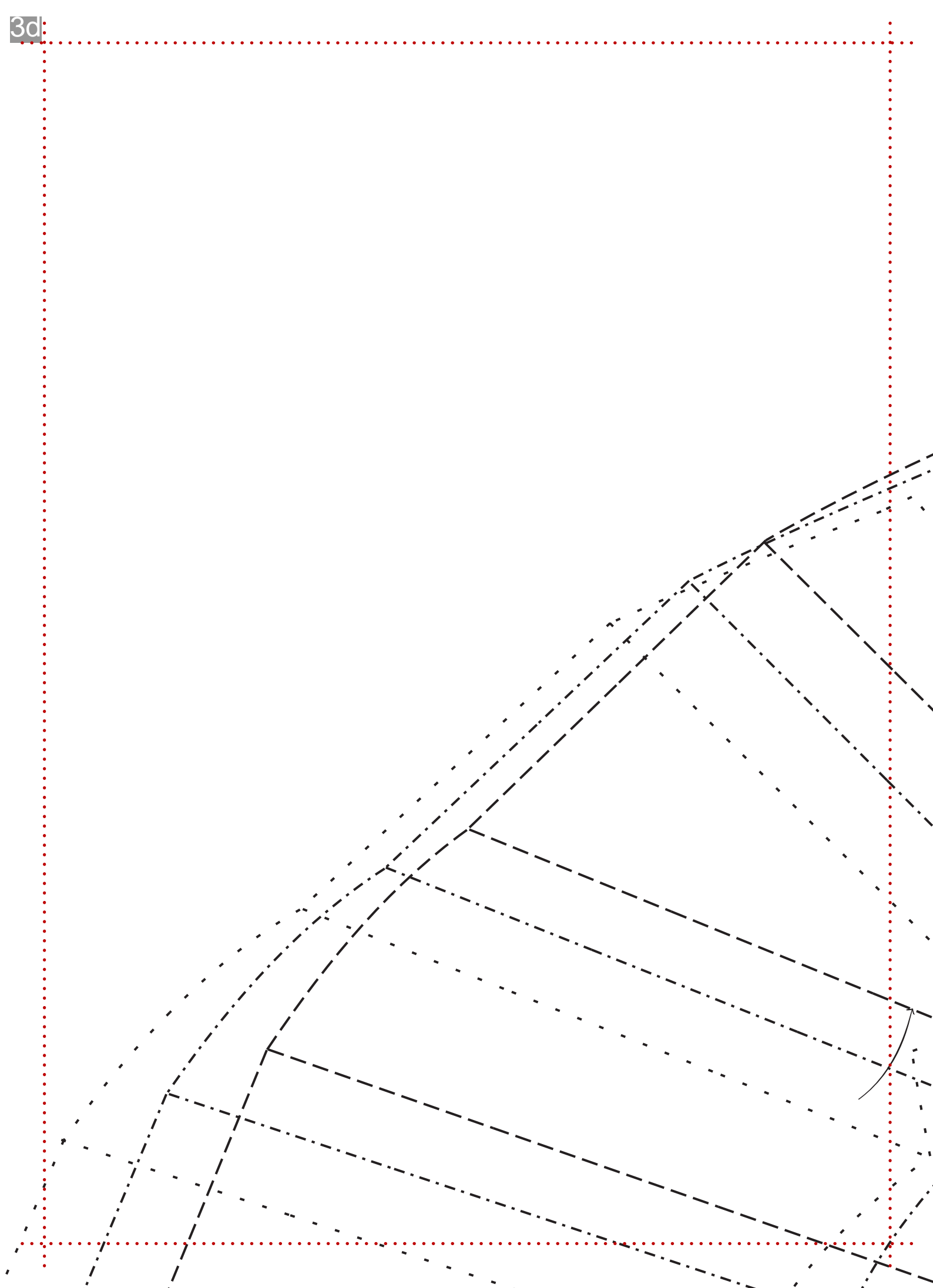
HOW TO DO FASHION P
 10-10 STOCKHOLM
 N/PEPLUM (VERSION 3)
 12/UK 10-12/US 6-10
 FABRIC
 SEAM ALLOWANCE

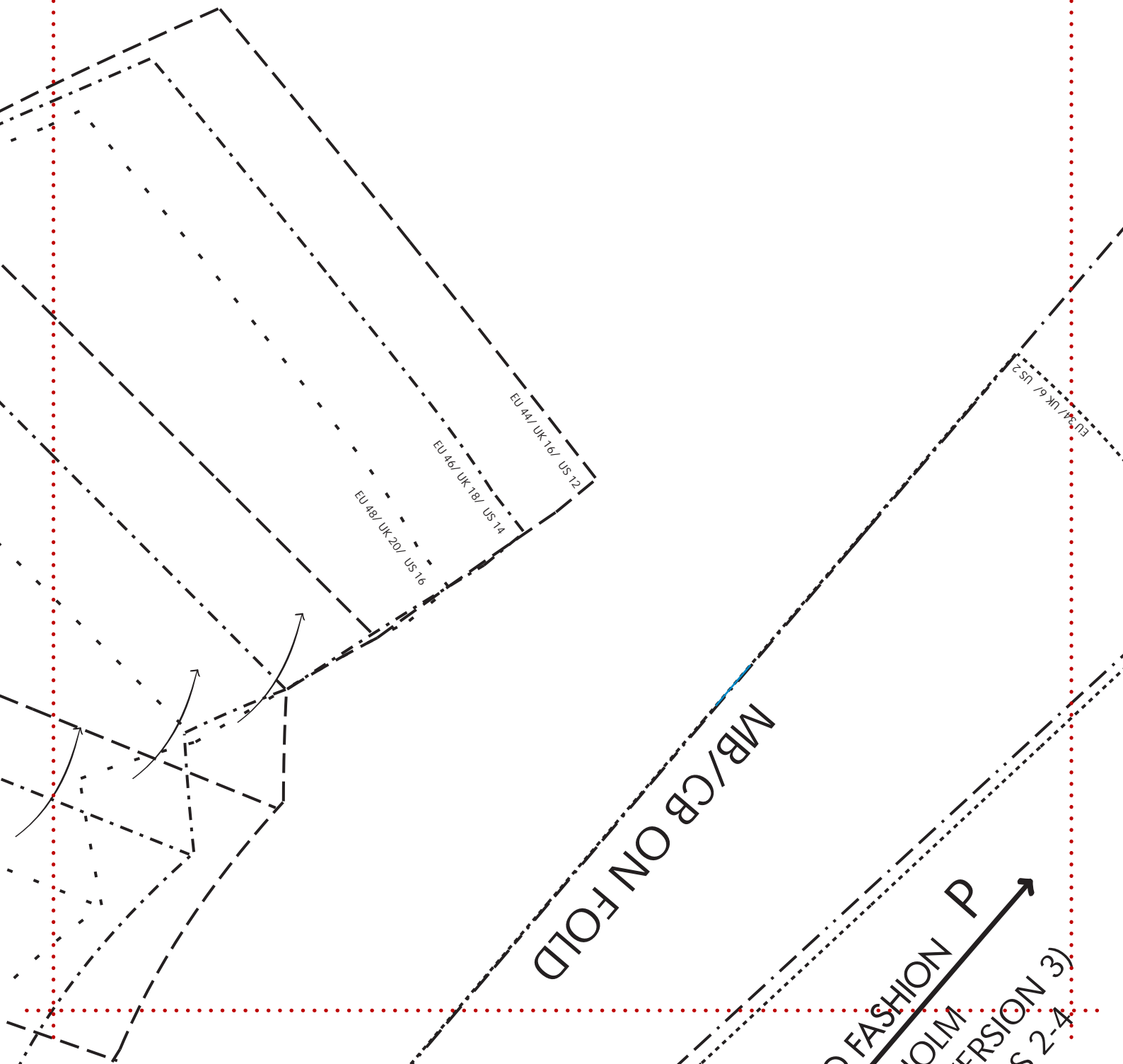
EU 36/UK 10/US 6

EU 42/UK 14/US 10

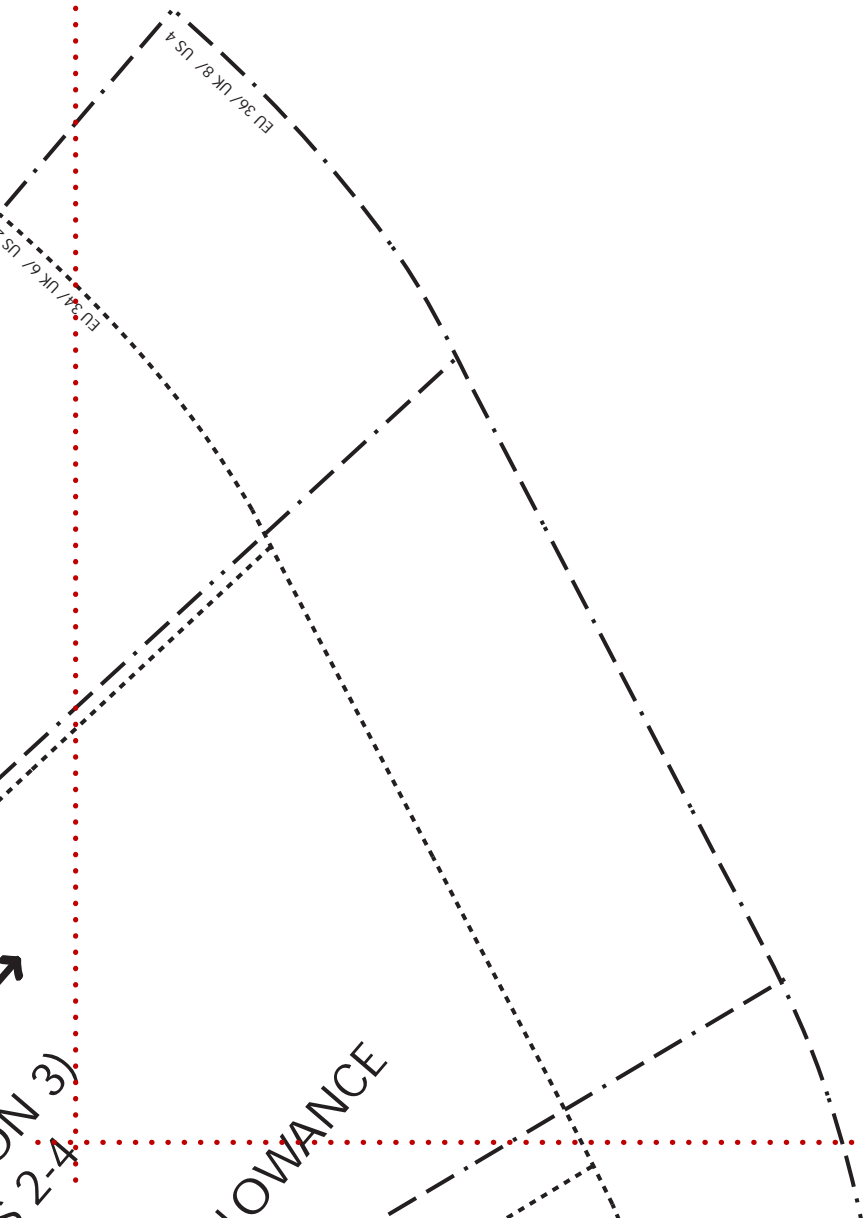








FASHION P
HOLM
VERSION 3)
S 2-4



- SYMBOLS
- Cell / other entity /
 - Cell / boundary of zone
 - Hatching / boundary
 - Boundary / hatching
 - Boundary / hatching
 - Hatching / boundary
 - Hatching / boundary

- R5/241 Rn 4r US 2
- R5/242 Rn 4r US 1
- R5/243 Rn 4r US 2
- R5/244 Rn 4r US 3
- R5/245 Rn 4r US 4
- R5/246 Rn 4r US 5
- R5/247 Rn 4r US 6
- R5/248 Rn 4r US 7
- R5/249 Rn 4r US 8
- R5/250 Rn 4r US 9
- R5/251 Rn 4r US 10
- R5/252 Rn 4r US 11
- R5/253 Rn 4r US 12
- R5/254 Rn 4r US 13
- R5/255 Rn 4r US 14
- R5/256 Rn 4r US 15
- R5/257 Rn 4r US 16
- R5/258 Rn 4r US 17
- R5/259 Rn 4r US 18
- R5/260 Rn 4r US 19
- R5/261 Rn 4r US 20
- R5/262 Rn 4r US 21
- R5/263 Rn 4r US 22
- R5/264 Rn 4r US 23
- R5/265 Rn 4r US 24
- R5/266 Rn 4r US 25
- R5/267 Rn 4r US 26
- R5/268 Rn 4r US 27
- R5/269 Rn 4r US 28
- R5/270 Rn 4r US 29
- R5/271 Rn 4r US 30
- R5/272 Rn 4r US 31
- R5/273 Rn 4r US 32
- R5/274 Rn 4r US 33
- R5/275 Rn 4r US 34
- R5/276 Rn 4r US 35
- R5/277 Rn 4r US 36
- R5/278 Rn 4r US 37
- R5/279 Rn 4r US 38
- R5/280 Rn 4r US 39
- R5/281 Rn 4r US 40
- R5/282 Rn 4r US 41
- R5/283 Rn 4r US 42
- R5/284 Rn 4r US 43
- R5/285 Rn 4r US 44
- R5/286 Rn 4r US 45
- R5/287 Rn 4r US 46
- R5/288 Rn 4r US 47
- R5/289 Rn 4r US 48
- R5/290 Rn 4r US 49
- R5/291 Rn 4r US 50
- R5/292 Rn 4r US 51
- R5/293 Rn 4r US 52
- R5/294 Rn 4r US 53
- R5/295 Rn 4r US 54
- R5/296 Rn 4r US 55
- R5/297 Rn 4r US 56
- R5/298 Rn 4r US 57
- R5/299 Rn 4r US 58
- R5/300 Rn 4r US 59
- R5/301 Rn 4r US 60
- R5/302 Rn 4r US 61
- R5/303 Rn 4r US 62
- R5/304 Rn 4r US 63
- R5/305 Rn 4r US 64
- R5/306 Rn 4r US 65
- R5/307 Rn 4r US 66
- R5/308 Rn 4r US 67
- R5/309 Rn 4r US 68
- R5/310 Rn 4r US 69
- R5/311 Rn 4r US 70
- R5/312 Rn 4r US 71
- R5/313 Rn 4r US 72
- R5/314 Rn 4r US 73
- R5/315 Rn 4r US 74
- R5/316 Rn 4r US 75
- R5/317 Rn 4r US 76
- R5/318 Rn 4r US 77
- R5/319 Rn 4r US 78
- R5/320 Rn 4r US 79
- R5/321 Rn 4r US 80
- R5/322 Rn 4r US 81
- R5/323 Rn 4r US 82
- R5/324 Rn 4r US 83
- R5/325 Rn 4r US 84
- R5/326 Rn 4r US 85
- R5/327 Rn 4r US 86
- R5/328 Rn 4r US 87
- R5/329 Rn 4r US 88
- R5/330 Rn 4r US 89
- R5/331 Rn 4r US 90
- R5/332 Rn 4r US 91
- R5/333 Rn 4r US 92
- R5/334 Rn 4r US 93
- R5/335 Rn 4r US 94
- R5/336 Rn 4r US 95
- R5/337 Rn 4r US 96
- R5/338 Rn 4r US 97
- R5/339 Rn 4r US 98
- R5/340 Rn 4r US 99
- R5/341 Rn 4r US 100

LECHO DO RELAZIONE

 LECHO DO RELAZIONE

