

How to do FASHION

Size chart EU/UK/US													
	32/4/0	34/6/2	36/8/4	38/10/6	40/12/8	42/14/10	44/16/12	46/18/14	48/20/16	50/22/18	52/24/20	54/26/22	
CHEST													
CM	80	84	88	92	96	101	106	112	118	124	131	138	
INCH	31.5	33.1	34.6	36.2	37.8	39.8	41.7	44.1	46.5	48.8	51.6	54.3	
WAIST													
CM	62	66	70	74	78	83	88	94	100	106	113	120	
INCH	24.4	26.0	27.6	29.1	30.7	32.7	34.6	37.0	39.4	41.7	44.5	47.2	
HIP													
CM	90	94	98	102	106	111	116	122	128	134	141	148	
INCH	35.4	37.0	38.6	40.2	41.7	43.7	45.7	48.0	50.4	52.8	55.5	58.3	



HOW TO MEASURE

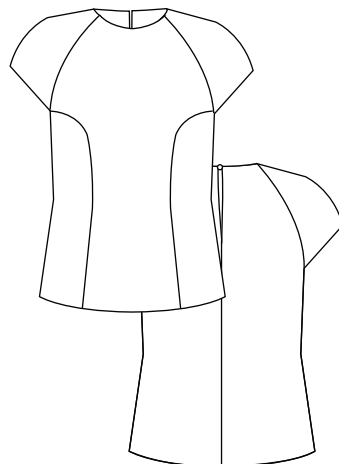
- Chest - measure at the top of the bust
- Waist - measure at the narrowest point
- Hip - Measure at the widest point

All measurement have to be horizontal

Finished measurement No.3 kastrup Version 1 & 2

	32/4/0	34/6/2	36/8/4	38/10/6	40/12/8	42/14/10	44/16/12	46/18/14	48/20/16	50/22/18	52/24/20	54/26/22
CHEST VERSION 1 & 2												
CM	86	90	94	98	102	107	112	118	124	130	137	144
INCH	33.9	35.4	37.0	38.6	40.2	42.1	44.1	46.5	48.8	51.2	53.9	56.7
WAIST VERSION 1												
CM	78	82	86	90	94	99	104	110	116	122	129	136
INCH	30.7	32.3	33.9	35.4	37.0	39.0	40.9	43.3	45.7	48.0	50.8	53.5
WAIST VERSION 2												
CM	93	97	101	105	109	114	119	125	131	137	144	151
INCH	36.6	38.2	39.8	41.3	42.9	44.9	46.9	49.2	51.6	53.9	56.7	59.4
FULL BOTTOM VERSION 1												
CM	96	100	104	108	112	117	122	128	134	140	147	154
INCH	37.8	39.4	40.9	42.5	44.1	46.1	48.0	50.4	52.8	55.1	57.9	60.6
FULL BOTTOM VERSION 2												
CM	122	126	130	134	138	143	148	154	160	166	173	180
INCH	48.0	49.6	51.2	52.8	54.3	56.3	58.3	60.6	63.0	65.4	68.1	70.9
LENGTH FROM TOP OF SHOULDER TO BOTTOM VERSION 1 & 2												
CM	63	64	65	66	67	68	69	70	71	72	73	74
INCH	24.8	25.2	25.6	26.0	26.4	26.8	27.2	27.6	28.0	28.3	28.7	29.1

VERSION 1



VERSION 2

