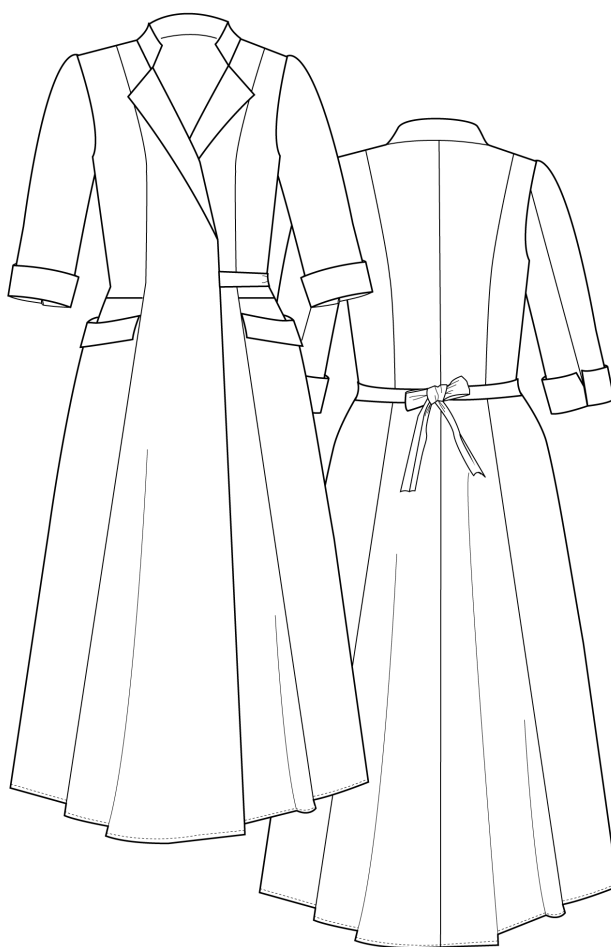




NO. 21 CASEBLANCA



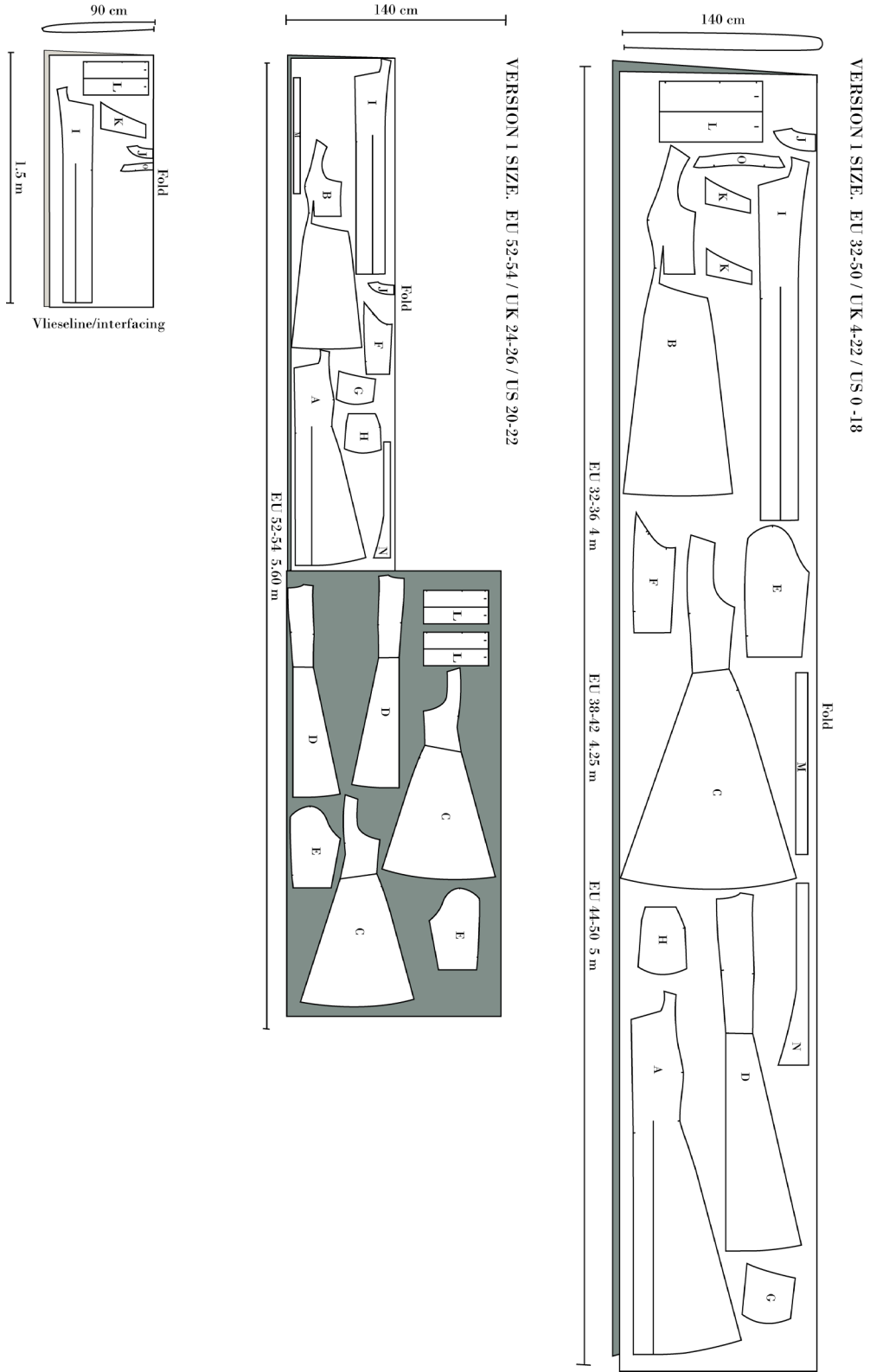
VERSION 1





Cutting

Match the lettered pattern pieces (A, B, C etc.) to the cutting layout plan for the view you have chosen.

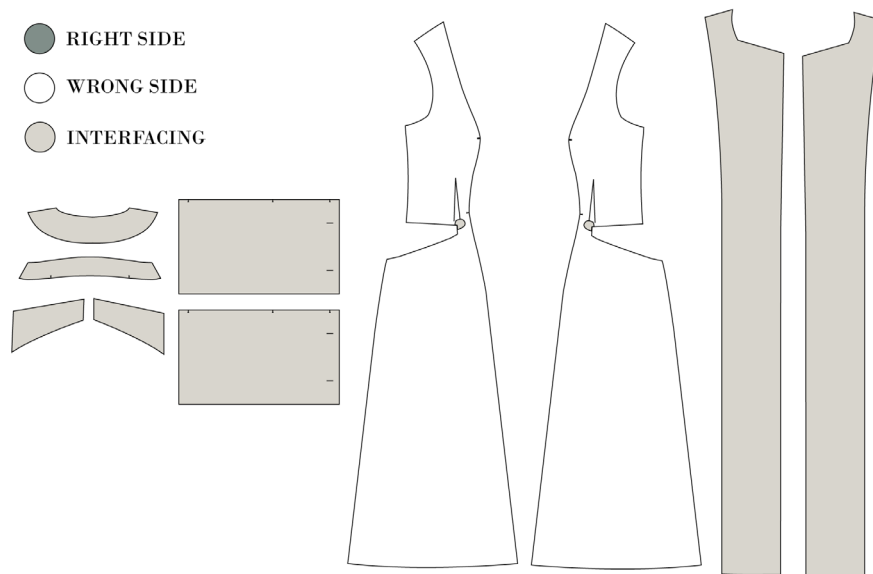




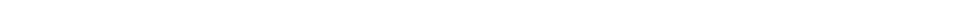
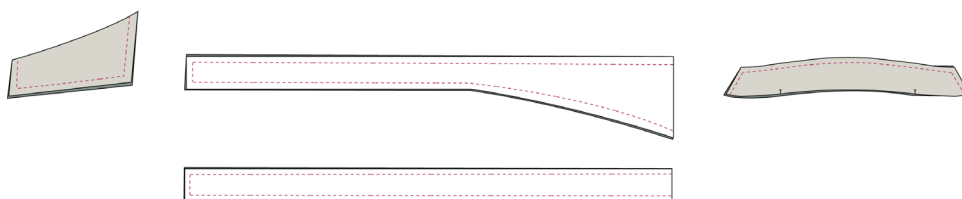
Sewing

Nb! The pattern has 1 cm seam allowances included unless otherwise noted.

1. Cut all your pieces from fabric and interfacing as needed.
2. Press the interfacing to the back neckline facing and the front facing (I & J), to one of the collar pieces (O), to two of the pocket flap pieces (K), to the cuffs (L), and a small scrap to the front-side pieces (B) as shown on the drawing.

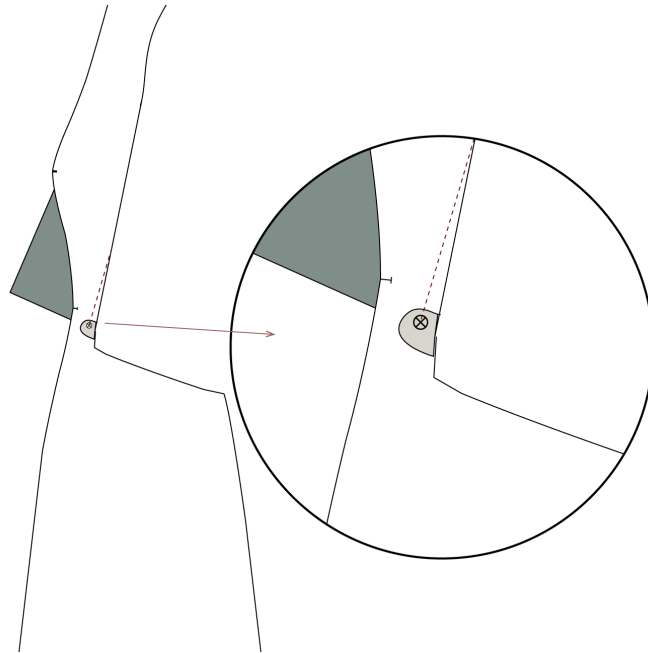


3. Sew the pocket flaps together in pairs, right sides together.
4. Sew the right-side waist tie, right sides together
5. Sew the left-side waist tie, right sides together.
6. Sew the collar, right sides together.
7. Turn and press all the pieces.





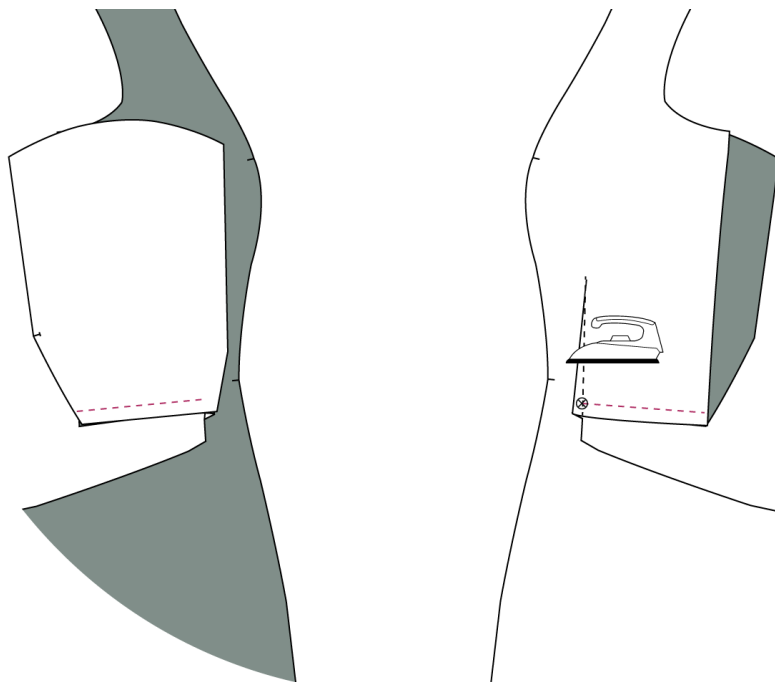
8. Sew the dart on the front-side piece, right sides together. Stop stitching at the marking.



SEWING THE POCKETS.

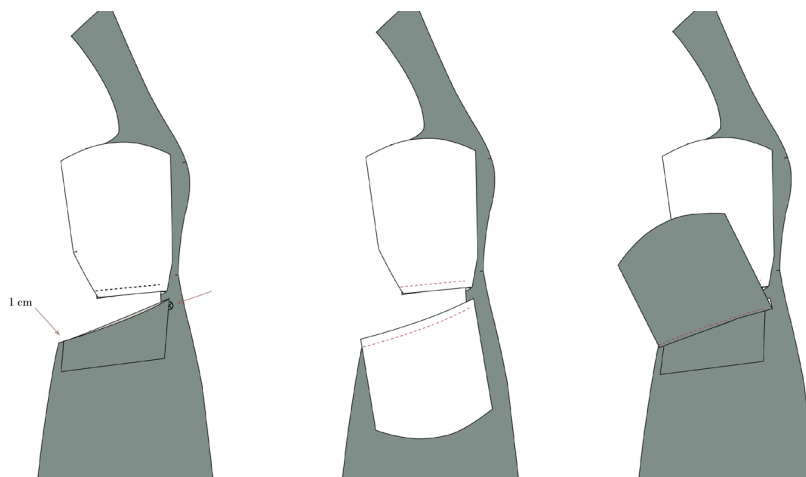
9. Place pocket bag 1 on the top part of the pocket opening on the front-side piece, right sides together.

10. Sew the pocket bag to the front-side piece. Stop the seam at the same place as you stopped stitching the dart.

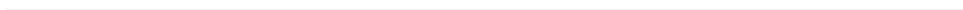
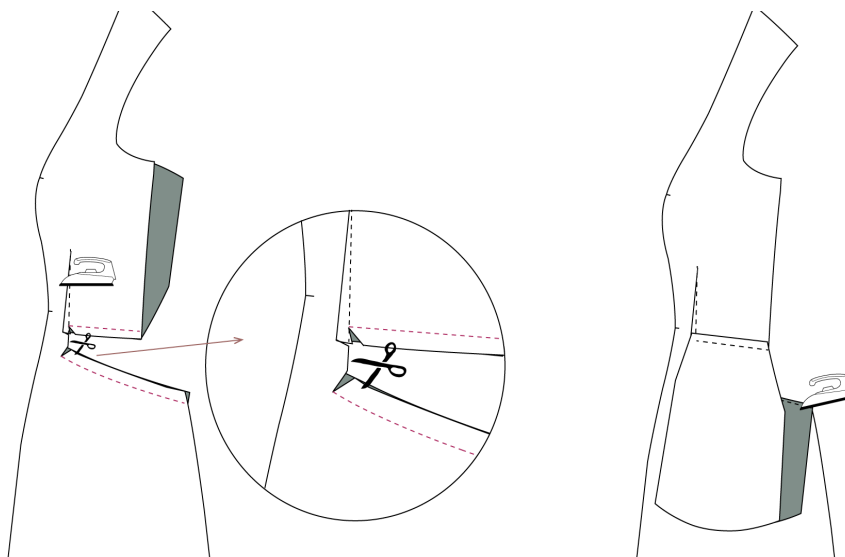




-
11. Place the pocket flap along the lower part of the pocket opening, right sides together, according to the marking on the pattern. Place the pocket flap so that it ends 1 cm from the side seam.
 12. Place pocket bag 2 on top of the pocket flap.
 13. Sew the pocket bag and pocket flap to the front-side piece. Sew from the side seam and end the seam where the pocket flap stops.
 14. Understitch pocket bag 2.



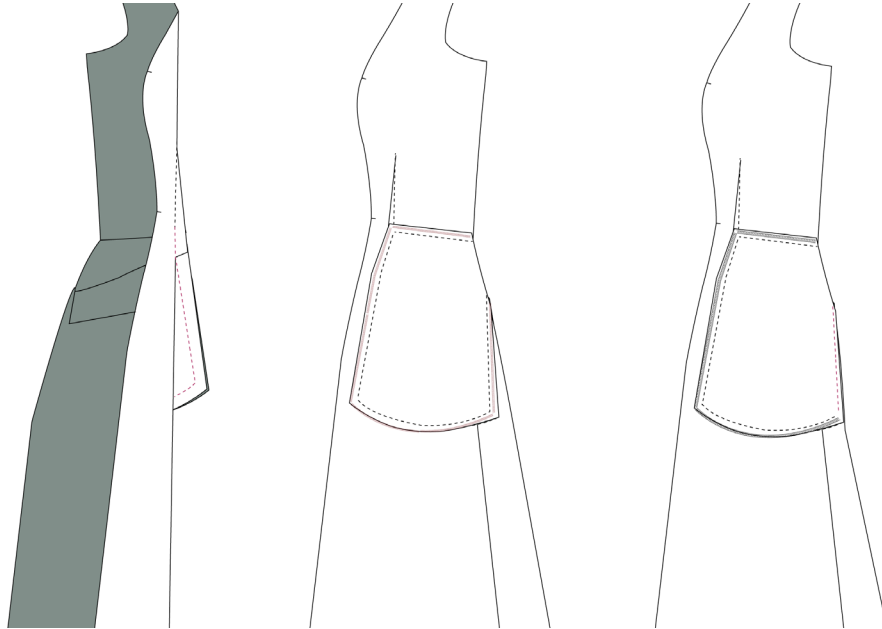
15. Clip notches to the corners of the pocket opening. It is essential that you only cut the front-side piece and not the pocket bags.
16. Press both pocket bags downwards, and press the dart towards CF.
17. Sew the pocket bags together at the bottom and in the side that is towards the front.





18. Overlock the top, the side towards the front, and the bottom of the pocket bag

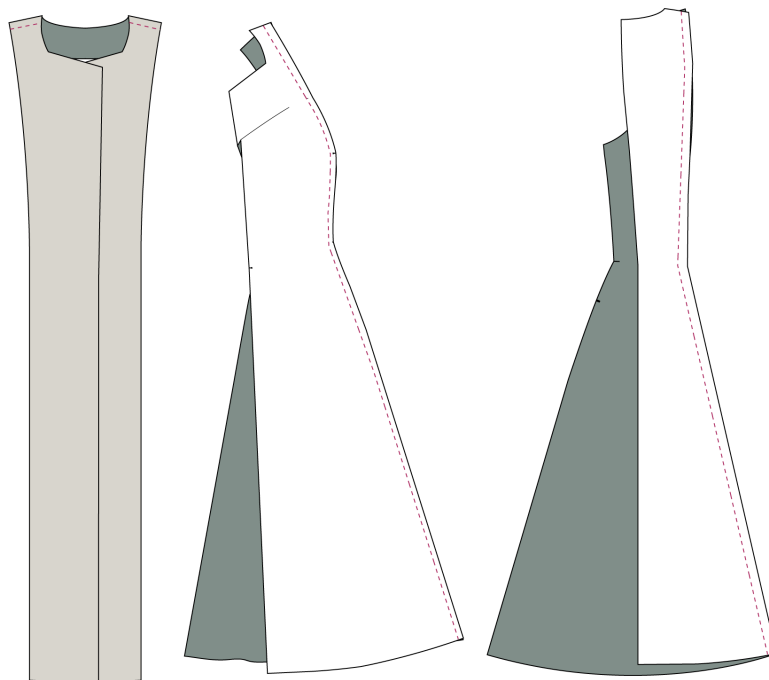
19. Machine baste the final side of the pocket bag to the side seam.



20. Sew the front facing to the back neck facing in the shoulder seam, right sides together. Press the seam open.

21. Sew the side-back to the CB piece, right sides together.

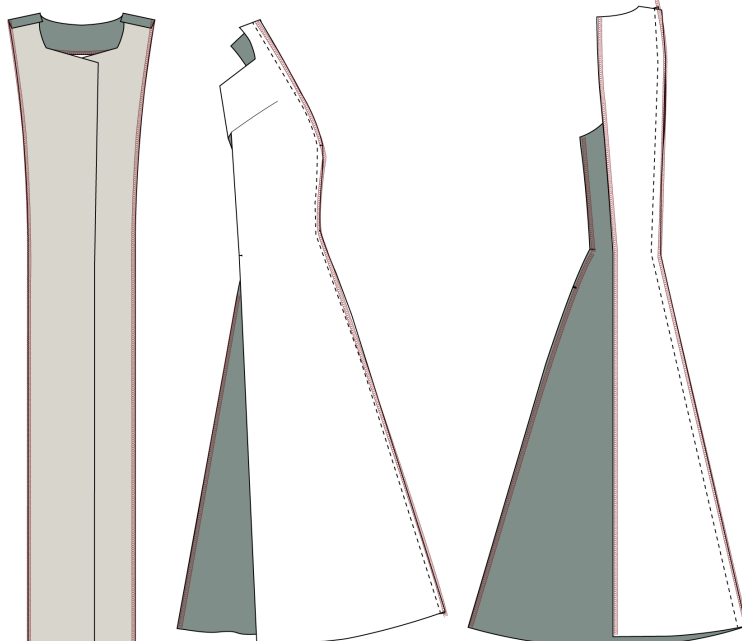
22. Sew the side-front to the CF piece, right sides together.





23. Overlock the seam allowances of:

- a. The side-back seam
- b. The side- front seam
- c. The long side of the facing
- d. Side seams on both the front and the back
- e. The CB seam



24. Sew the CB seam right sides together, and press the seam open.

25. Press the front-side seam allowance towards CF.

26. Press back-side seam allowance towards CB.

27. Overlock the shoulder seams.





-
28. Sew the left side seam, right sides together.
 29. Sew the right side seam, right sides together. Leave an opening of about 3 cm at the waist marking.
 30. Sew the shoulder seams right sides together.
 31. Press all seam allowances open.



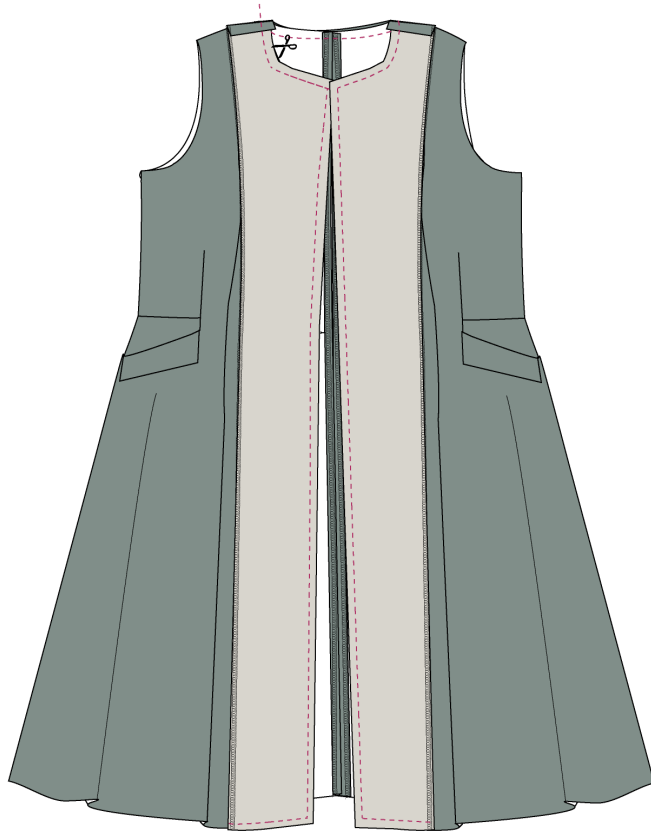
32. Place and pin the collar to the neckline, right sides together.
33. Place and pin the waist ties to the front edges of the dress. Place them just over the waist notch. The straight tie is for the right side.





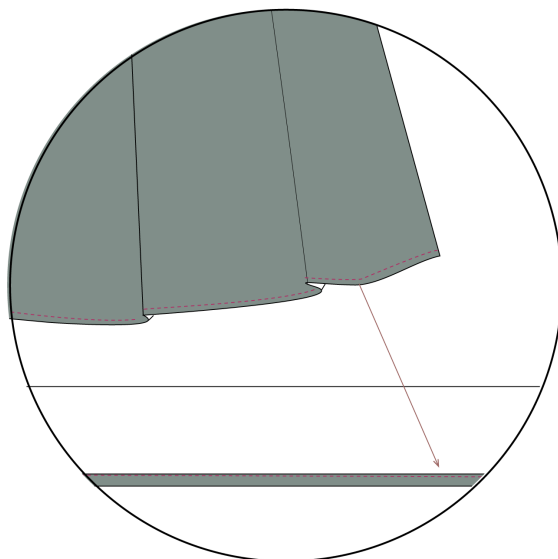
34. Place the right side of the neckline-facing on the right side of the dress. Sew along the neckline, front, and bottom.

35. Clip notches to the seam allowance at the neckline. Understitch the facing from shoulder seam to shoulder seam.



36. Turn the facing to the right side and press.

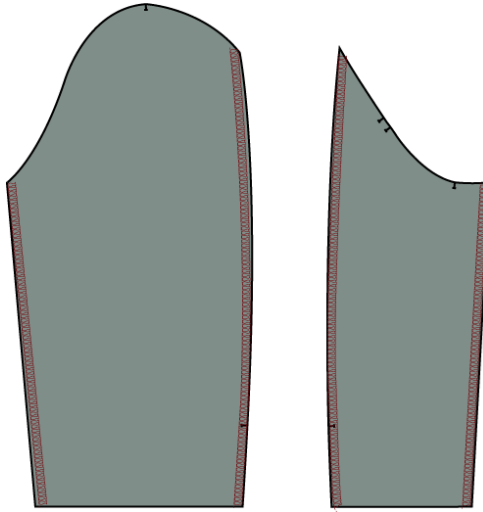
37. Hem the dress with a narrow hem by folding the hemline 0.5 cm x 0.5 cm and stitching.





SEWING THE SLEEVES

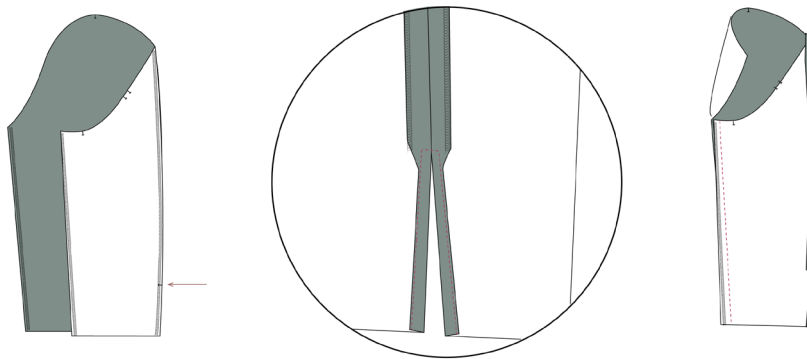
38. Overlock all the long edges on the two sleeve pieces.



39. Sew the long sleeve seam, right sides together. Stop the stitching at the notch.

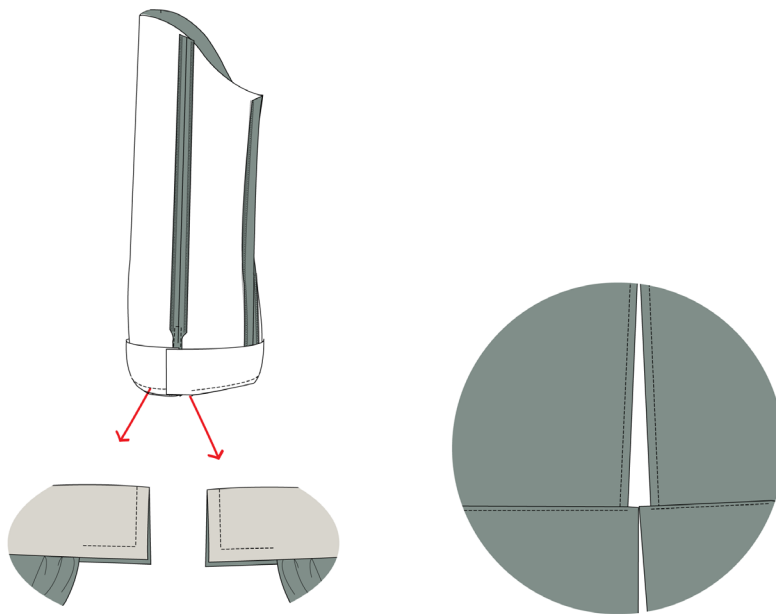
40. Fold the sleeve vent's seam allowance at 0.5 cm x 0.5 cm and top-stitch around the sleeve vent opening.

41. Sew the short sleeve seam, right sides together.

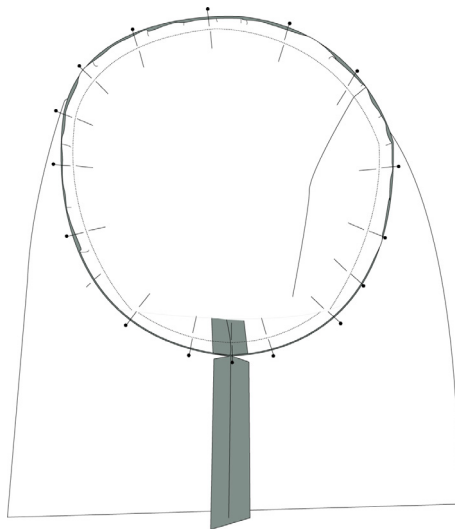




-
42. Press all the sleeve seam allowances open.
 43. Place the right side of the cuff to the wrong side of the sleeve according to the notches. See video
 44. Fold the cuff in half with right sides together and sew the ends of the cuffs.
 45. Turn the cuffs to the right side and press the seam allowance into the cuffs.
 46. Sew the cuff to the sleeve by topstitching 0.2 cm from the folded edge.



47. Pin the sleeves to the armscye. The sleeves have a 2 cm ease.



48. Sew the sleeves in place and overlock the seam allowances.
-