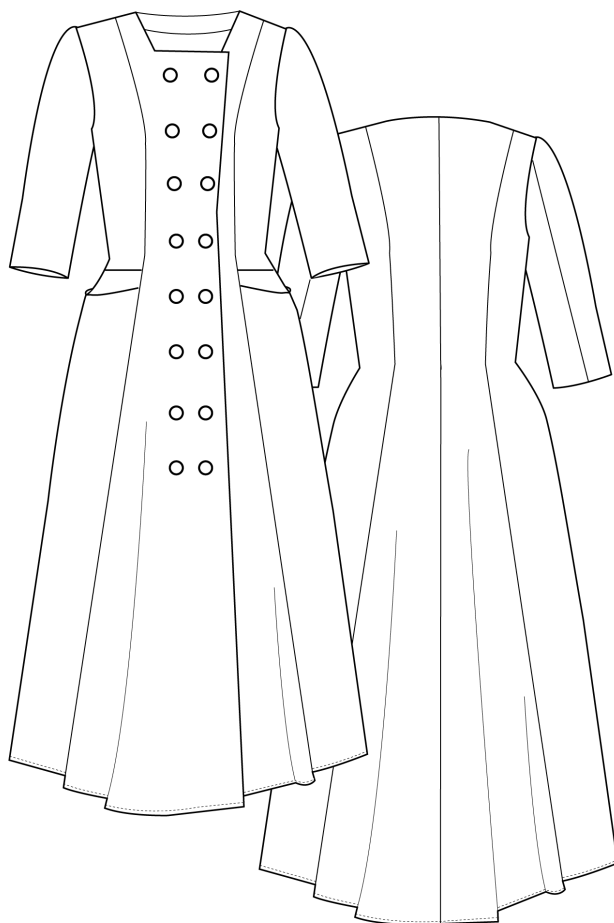




NO. 21 CASEBLANCA



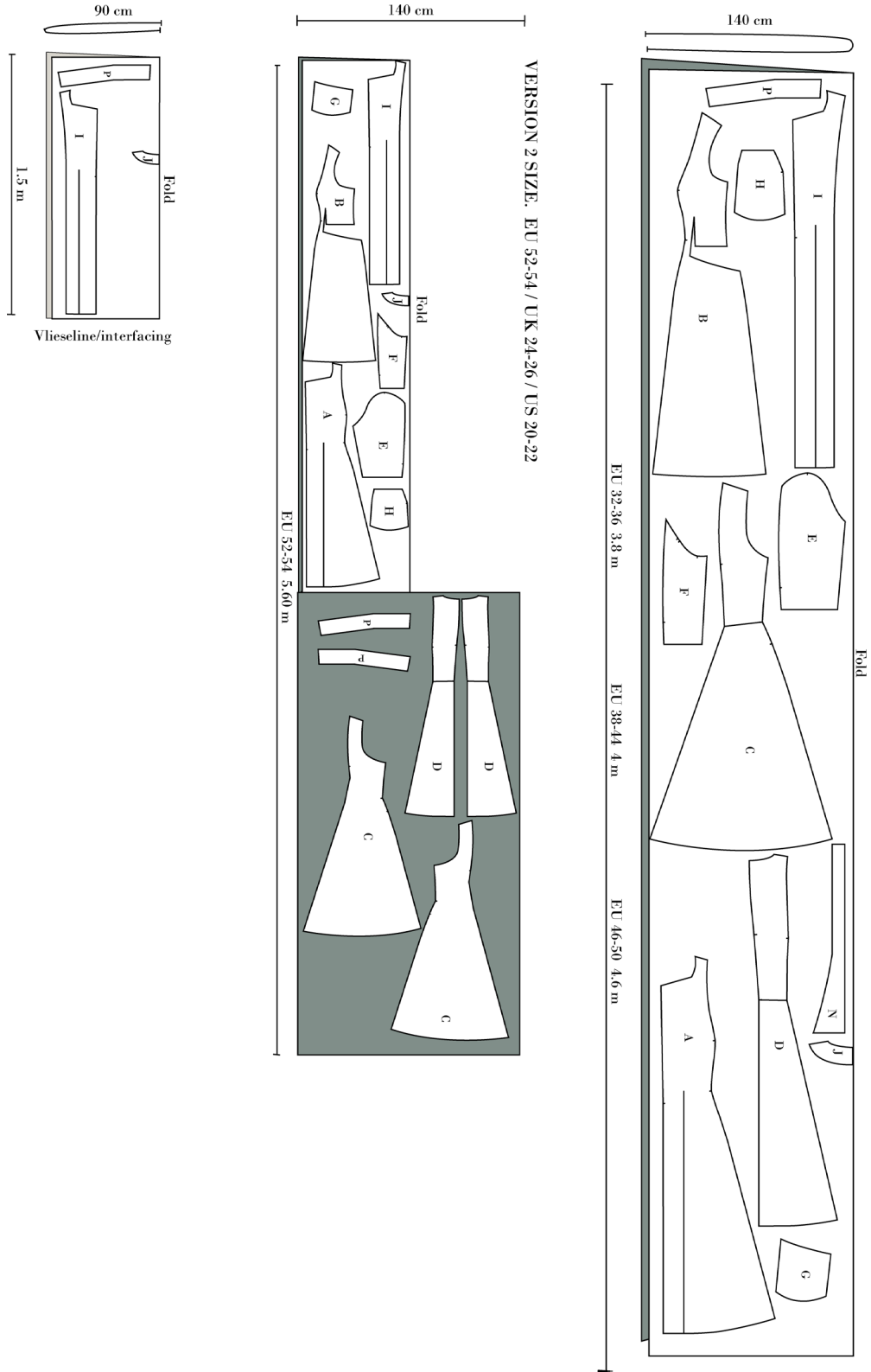
VERSION 2





Cutting

Match the lettered pattern pieces (A, B, C etc.) to the cutting layout plan for the view you have chosen.

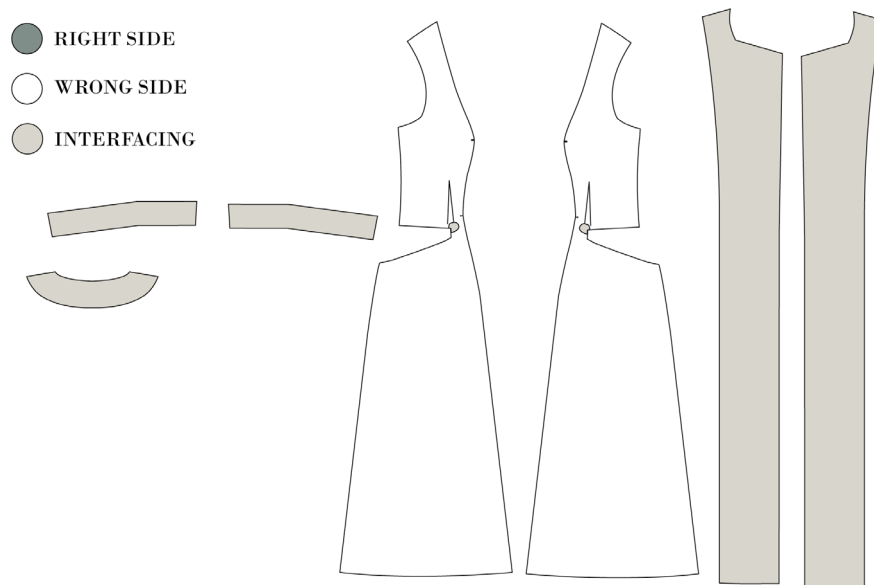




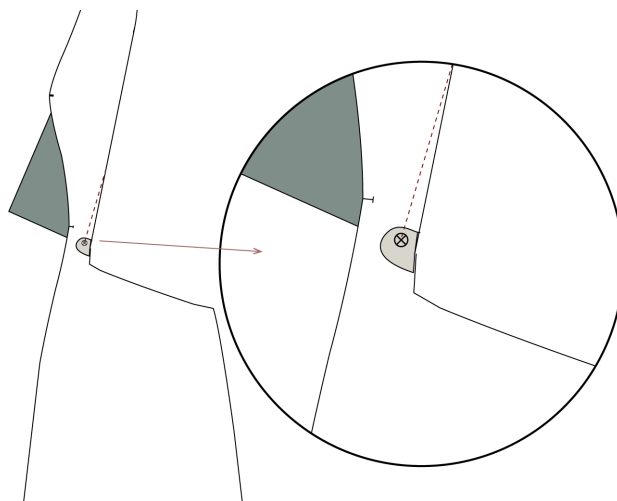
Sewing

Nb! The pattern has 1 cm seam allowances included unless otherwise noted.

1. Cut all your pieces from fabric and interfacing as needed.
2. Press the interfacing to the back neckline facing and the front facing (I & J), the sleeve hem facing (P) and a small scrap to the front-side pieces (B) as shown on the drawing.



3. Sew the dart on the front-side piece, right sides together. Stop stitching at the marking.

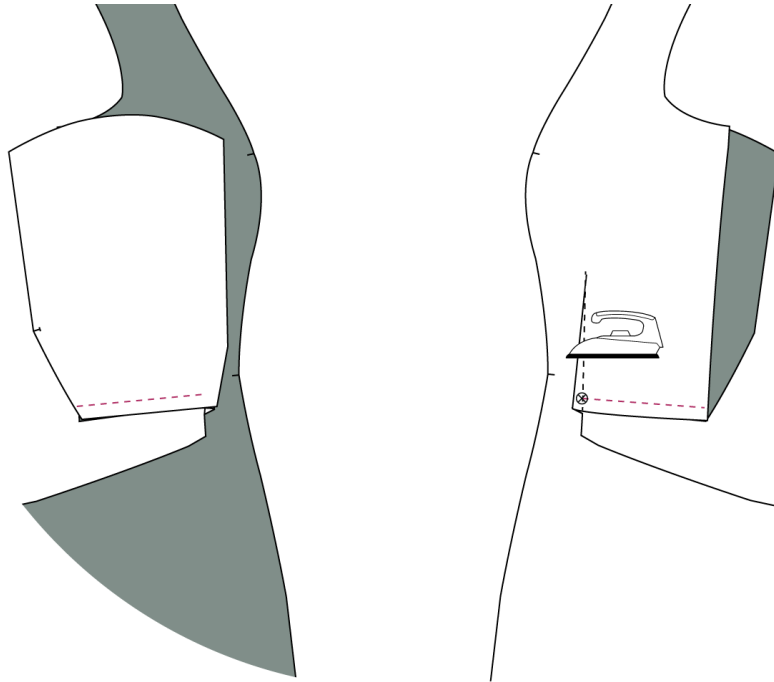




SEWING THE POCKETS.

4. Place pocket bag 1 on the top part of the pocket opening on the front-side piece, right sides together.

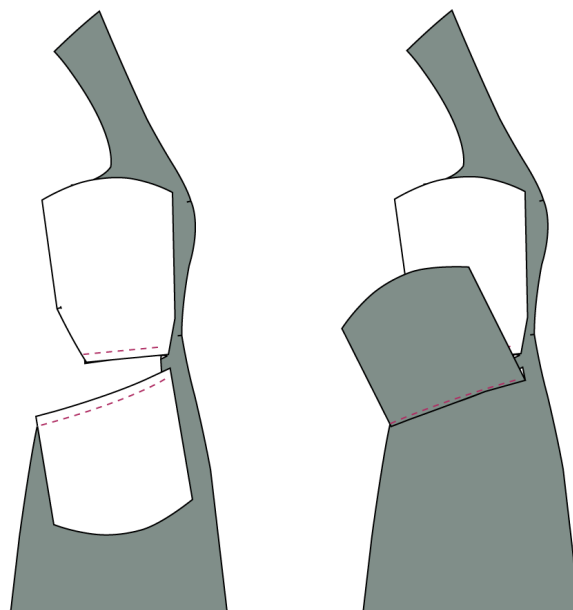
5. Sew the pocket bag to the front-side piece. Stop the seam at the same place as you stopped stitching the dart.



6. Place pocket bag 2 along the lower part of the pocket opening, right sides together, according to the marking on the pattern

7. Sew the pocket bag to the front-side piece. Sew from the side seam and end the seam at the marking.

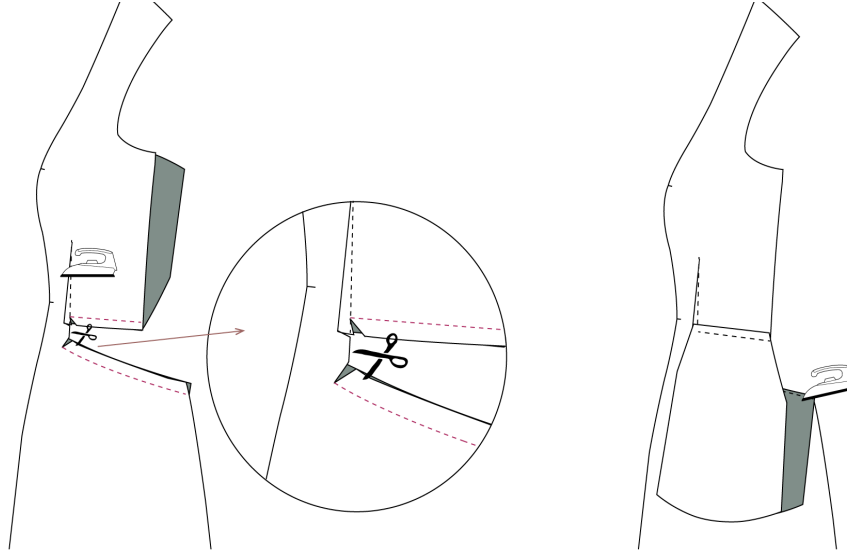
8. Understitch pocket bag 2.





9. Clip notches to the corners of the pocket opening. It is essential that you only cut the front-side piece and not the pocket bags.

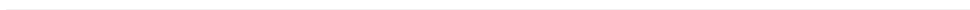
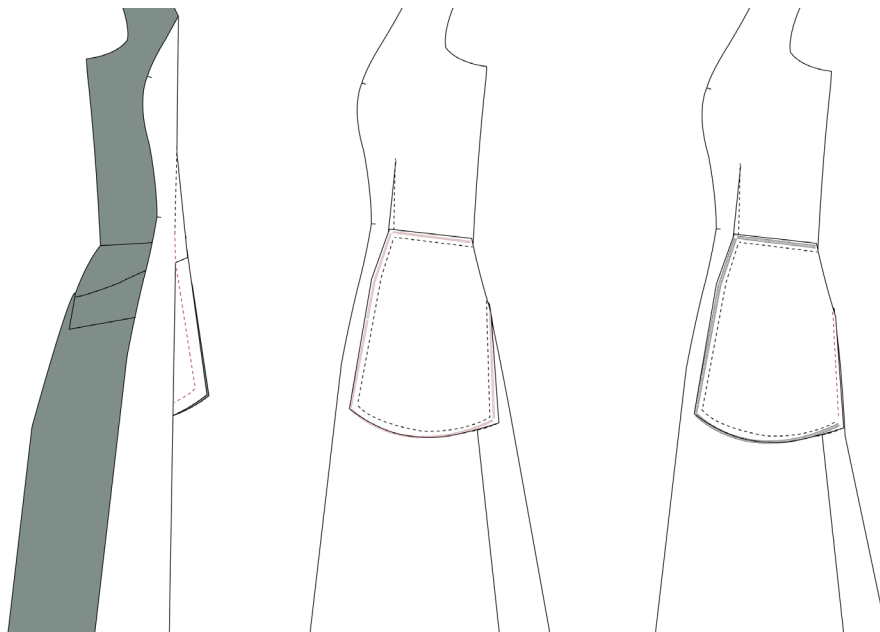
10. Press both pocket bags downwards, and press the dart towards CF.



11. Sew the pocket bags together at the bottom and in the side that is towards the front.

12. Overlock the top, the side towards the front, and the bottom of the pocket bag.

13. Machine baste the final side of the pocket bag to the side seam.

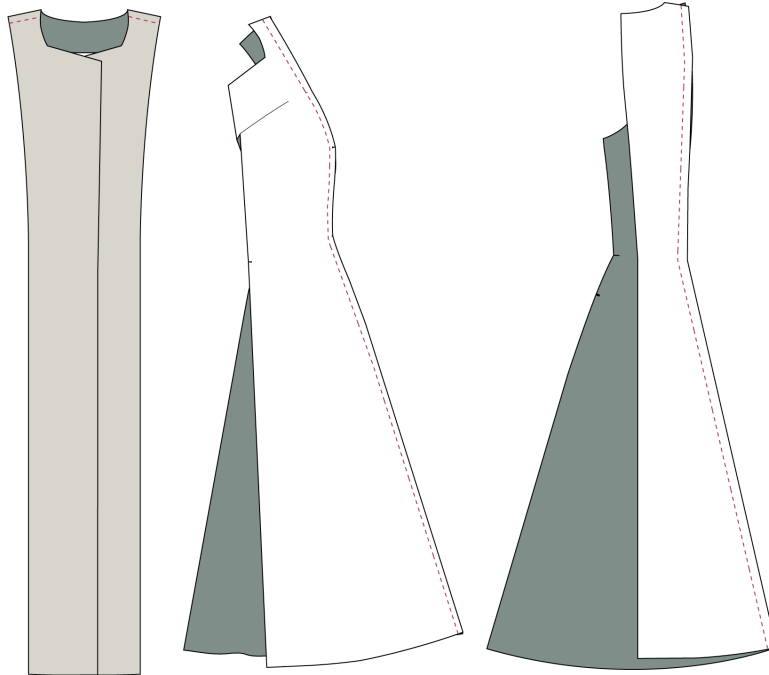




14. Sew the front facing to the back neck facing in the shoulder seam, right sides together. Press the seam open.

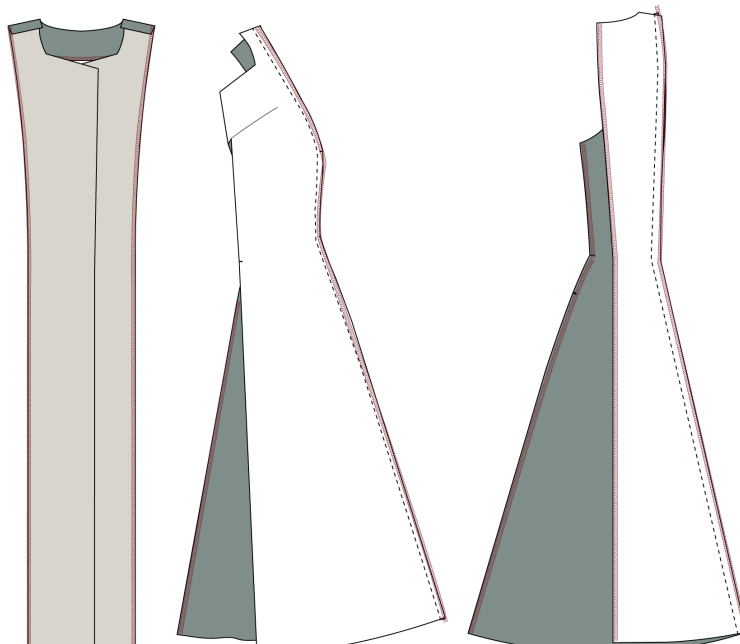
15. Sew the side-back to the CB piece, right sides together.

16. Sew the side-front to the CF piece, right sides together.



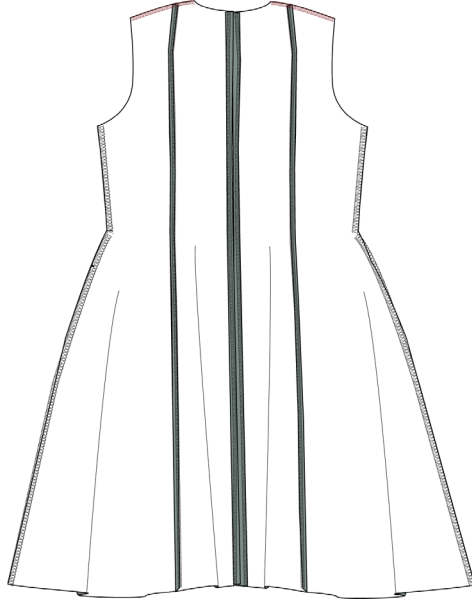
17. Overlock the seam allowances of:

- a. The side-back seam
- b. The side- front seam
- c. The long side of the facing
- d. Side seams on both the front and the back
- e. The CB seam

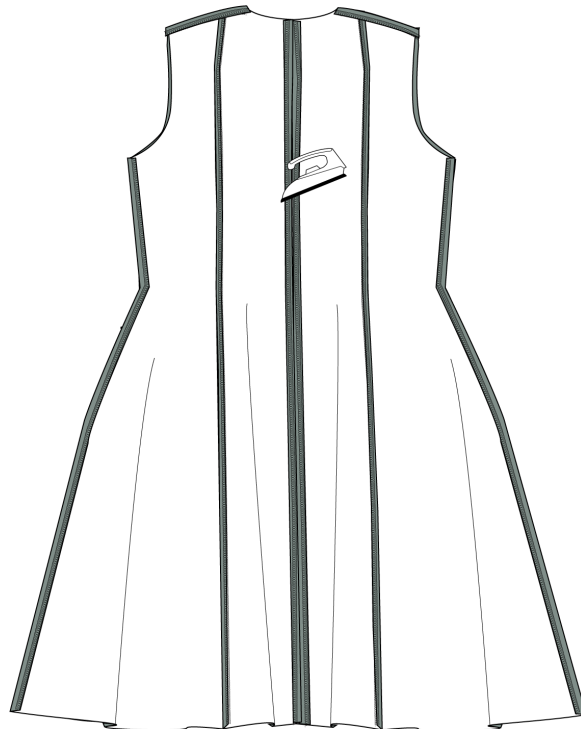




-
18. Sew the CB seam right sides together, and press the seam open.
 19. Press the front-side seam allowance towards CF.
 20. Press back-side seam allowance towards CB.
 21. Overlock the shoulder seams.

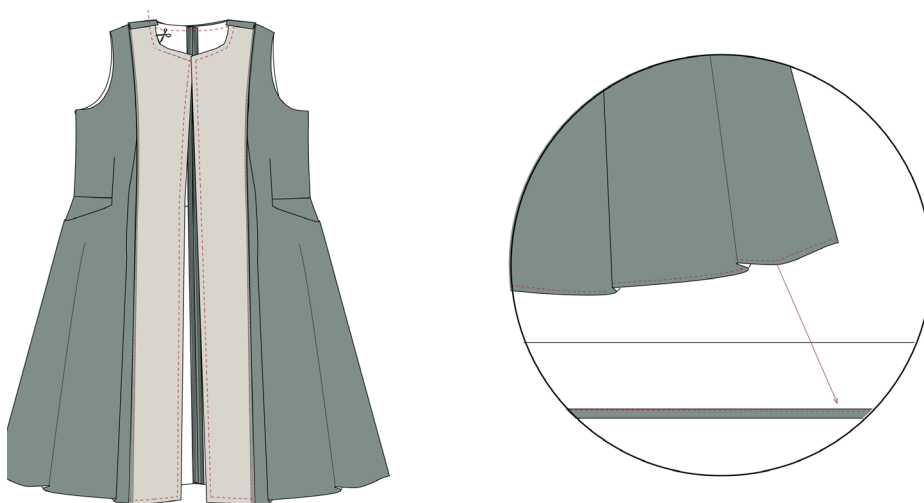


22. Sew the side seams, right sides together.
23. Sew the shoulder seams right sides together.
24. Press all seam allowances open.



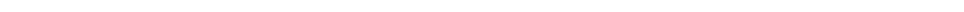
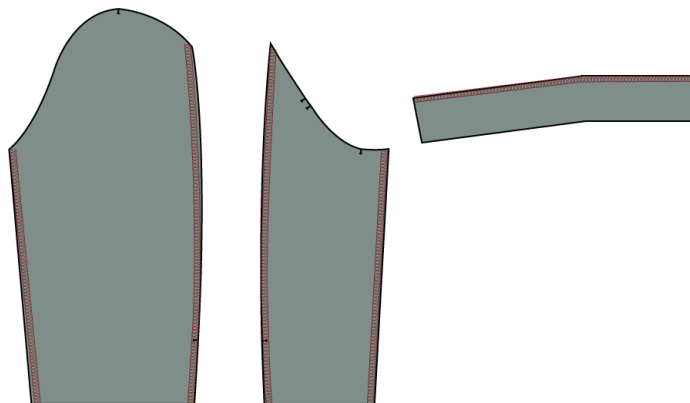


-
25. Place the right side of the neckline-facing on the right side of the dress. Sew along the neckline, front, and bottom.
 26. Clip notches to the seam allowance at the neckline. Understitch the facing from shoulder seam to shoulder seam.
 27. Turn the facing to the right side and press.
 28. Hem the dress with a narrow hem by folding the hemline 0.5 cm x 0.5 cm and stitching. See the video.



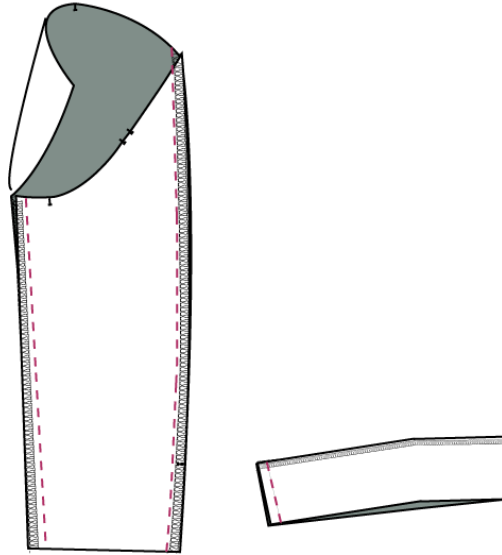
SEWING THE SLEEVES

29. Overlock:
 - a. All the long edges on the two sleeve pieces.
 - b. The long edge of the sleeve facing.

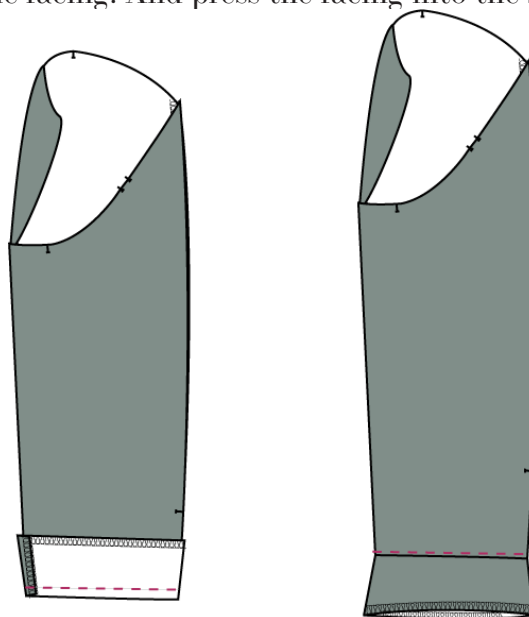




-
30. Sew the long sleeve seam, right sides together.
 31. Sew the short sleeve seam, right sides together.
 32. Sew the sleeve facing, right sides together.



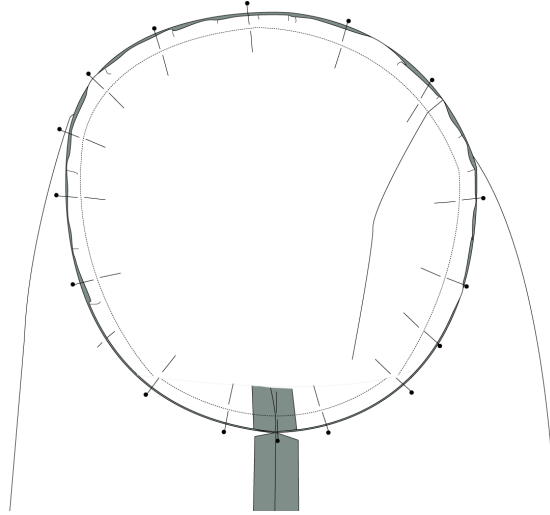
33. Press all the sleeve seam allowances open.
34. Sew the hem facing to the bottom of the sleeve, right sides together.
35. Understitch the facing. And press the facing into the sleeve.





36. Hem the sleeve with an invisible catch stitch or a topstitch.

37. Pin the sleeves to the armhole. The sleeves have a 2 cm ease



38. Sew the sleeves in place and overlock the seam allowances.

39. Sew in buttonholes and buttons. Place the buttons according to the CF. The placement of the buttonholes is depending on the size of the buttons.

